

## Ferry SCH

[Go to website](#)

### Direction

Emden Außenhafen — Borkum Reede

2 stops

[Open route schedule](#)

Emden Außenhafen

Borkum Reede

### Route schedule

Emden Außenhafen — Borkum Reede

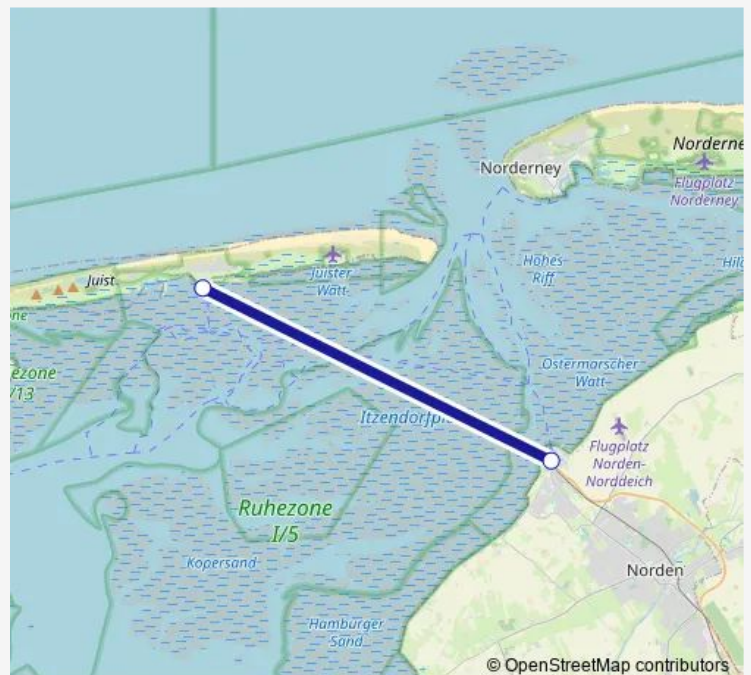
Monday	08:00-16:45
Tuesday	08:00-16:45
Wednesday	08:00-16:45
Thursday	08:00-16:45
Friday	08:00-16:45
Saturday	08:00-16:45
Sunday	08:30-17:15

### Route info

Direction: Emden Außenhafen

Stops: 2

Trip Duration: 2 hour 10 min



SCH

BusMaps

**Direction**

Borkum(Nordseebad) — Emden Außenhafen

2 stops

[Open route schedule](#)

Borkum(Nordseebad)

Emden Außenhafen

## Route schedule

Borkum(Nordseebad) — Emden Außenhafen

Monday 07:30-13:30

Tuesday 07:30-13:30

Wednesday 10:30-16:30

Thursday 07:30-16:30

Friday 07:30-16:30

Saturday 07:15-16:30

Sunday 08:30-16:30

## Route info

Direction: Borkum(Nordseebad)

Stops: 2

Trip Duration: 2 hour 40 min

**Direction**

Norddeich Mole — Juist

2 stops

[Open route schedule](#)

Norddeich Mole

Juist

## Route schedule

Norddeich Mole — Juist

Monday	07:45-13:30
Tuesday	08:30-13:30
Wednesday	09:30-15:30
Thursday	09:30-16:30
Friday	10:30-18:15
Saturday	11:30-18:15
Sunday	07:30-12:30

## Route info

Direction: Norddeich Mole

Stops: 2

Trip Duration: 1 hour 30 min

## Direction

Kloster(Hiddensee) — Schaprode

4 stops

[Open route schedule](#)

Kloster(Hiddensee)

Vitte(Hiddensee)

Neuendorf(Hiddensee)

Schaprode

## Route schedule

Kloster(Hiddensee) — Schaprode

Monday 06:50-17:45

---

Tuesday 06:50-17:45

---

Wednesday 09:00-12:15

---

Thursday 06:50-17:45

---

Friday 06:50-17:45

---

Saturday 06:30-16:00

---

Sunday 09:00-16:00

## Route info

Direction: Kloster(Hiddensee)

Stops: 4

Trip Duration: 1 hour 30 min

## Direction

Schaprode — Kloster(Hiddensee)

4 stops

[Open route schedule](#)

Schaprode

Neuendorf(Hiddensee)

Vitte(Hiddensee)

Kloster(Hiddensee)

## Route schedule

Schaprode — Kloster(Hiddensee)

Monday 06:00-17:10

---

Tuesday 06:00-17:45

---

Wednesday 10:35-17:45

---

Thursday 06:00-17:10

---

Friday 06:00-18:40

---

Saturday 08:00-17:45

---

Sunday 10:35-17:45

## Route info

Direction: Schaprode

Stops: 4

Trip Duration: 1 hour 30 min

**Direction**

Norddeich Mole — Norderney

2 stops

[Open route schedule](#)

Norddeich Mole

Norderney

## Route schedule

Norddeich Mole — Norderney

Monday	06:15-18:15
Tuesday	06:15-18:15
Wednesday	07:30-18:15
Thursday	06:15-18:15
Friday	06:15-20:30
Saturday	06:15-18:15
Sunday	06:15-18:15

## Route info

Direction: Norddeich Mole

Stops: 2

Trip Duration: 1 hour 0 min

**Direction**

Juist — Norddeich Mole

2 stops

[Open route schedule](#)

Juist

Norddeich Mole

**Route schedule**

Juist — Norddeich Mole

Monday	09:45-15:30
Tuesday	10:30-15:30
Wednesday	11:30-17:30
Thursday	11:30-18:15
Friday	06:45-13:45
Saturday	07:45-13:30
Sunday	08:45-14:30

**Route info**

Direction: Juist

Stops: 2

Trip Duration: 1 hour 30 min

**Direction**

Norderney — Norddeich Mole

2 stops

[Open route schedule](#)

Norderney

Norddeich Mole

## Route schedule

Norderney — Norddeich Mole

Monday	06:15-18:15
Tuesday	06:15-18:15
Wednesday	08:40-18:15
Thursday	06:15-18:15
Friday	06:15-18:15
Saturday	06:15-18:15
Sunday	06:15-18:15

## Route info

Direction: Norderney

Stops: 2

Trip Duration: 1 hour 0 min

SCH Ferry time schedules and route maps are available in an offline PDF at busmaps.com. Use the busmaps.com website to see live bus times, train schedule or subway schedule, and step-by-step directions for all public transit in Hiddensee

The schedule is provided in the local timezone. Times with "(+1)" indicate departures on the next day.

PDF file created on 2024-12-21

2024 BusMaps.com - All Rights Reserved