



Bus B Route B

[Go to website](#)

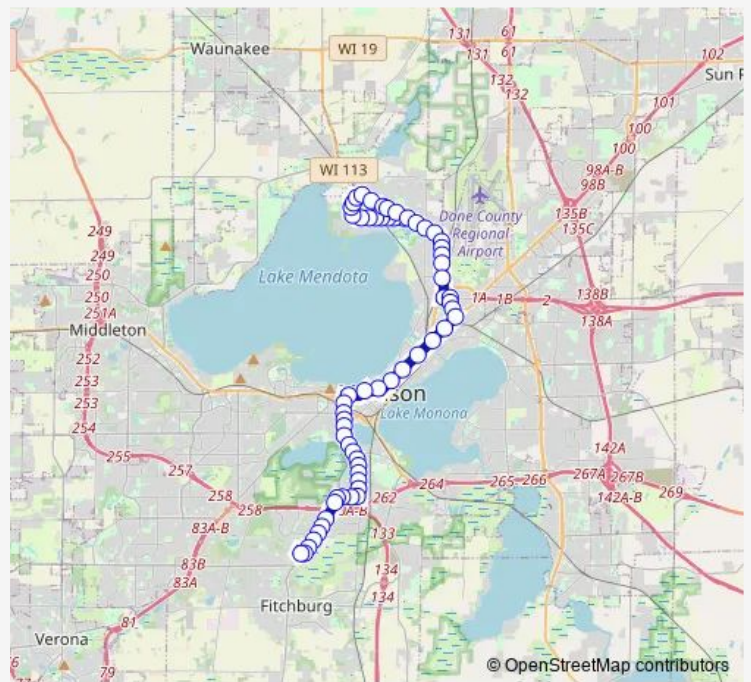
Direction
 Cahill at Caddis — Troy at Forster
 46 stops
[Open route schedule](#)

- Cahill at Caddis
- Fish Hatchery at Caddis
- Fish Hatchery at High Ridge
- Fish Hatchery at Traceway
- Fish Hatchery at Post
- Fish Hatchery at Ochalla
- Fish Hatchery at Greenway
- Fish Hatchery at Emil
- W Badger at Fish Hatchery
- W Badger at Fiedler
- W Badger at Cypress
- W Badger at South Transfer
- S Park at Buick
- S Park at Burr Oak
- S Park at Crosswalk
- S Park at Wingra
- S Park at Cedar
- S Park at W Olin
- S Park at Fish Hatchery
- S Park at Erin
- S Park at W Washington

Route schedule
 Cahill at Caddis — Troy at Forster

Monday	05:22-23:20
Tuesday	05:22-23:20
Wednesday	05:22-23:20
Thursday	05:22-23:20
Friday	05:22-23:20
Saturday	05:23-22:48
Sunday	05:25-22:48

Route info
 Direction: Cahill at Caddis
 Stops: 46
 Trip Duration: 0 hour 49 min



■ B — Route B **BusMaps**

S Park at Meriter

N Park at Regent

N Park at W Dayton

East Campus

State

Capitol Square

Blair

Paterson

Baldwin

First Street

Fourth Street

North at E Washington

North at E Johnson

North at Hoard

Commercial at North

Packers at Commercial

Packers at Aberg

Packers at Schlimgen

Packers at International

Packers at Manley

Packers at Elka

Northport at Dryden

Northport at N Sherman

Northport at Warner Park

Troy at Forster

Direction

Troy at Forster — Cahill at Caddis

62 stops

[Open route schedule](#)

Troy at Forster

Troy at Goodland

Troy at Crosswalk

Troy at School

Troy at Karstens

Troy at Lerdahl

Troy at Harper

Troy at Green

Green at Meadow Ridge

Murphy at Green

North at Central Wisconsin

Knutson at Northport

Northport at Kennedy

Northport at School

Northport at Barby

Northport at Goodland

Northport at Troy

Northport at Warner Park

Northport at N Sherman

Northport at Dryden

Packers at Elka

Packers at Manley

Packers at International

Packers at Schlimgen

Packers at Aberg

Route schedule

Troy at Forster — Cahill at Caddis

Monday 04:52-00:02⁺¹Tuesday 04:52-00:02⁺¹Wednesday 04:52-00:02⁺¹Thursday 04:52-00:02⁺¹Friday 04:52-00:02⁺¹

Saturday 05:17-23:32

Sunday 05:17-23:32

Route info

Direction: Troy at Forster

Stops: 62

Trip Duration: 0 hour 58 min

Commercial at Packers

Commercial at North

North at Hoard

North at E Johnson

Milwaukee-North

Fourth Street

First Street

Baldwin

Paterson

Blair

Capitol Square

State

East Campus

N Park at W Dayton

S Park at Regent

S Park at Meriter

S Park at W Washington

S Park at Erin

S Park at Fish Hatchery

S Park at W Olin

S Park at Cedar

S Park at Wingra

S Park at Crosswalk

S Park at Burr Oak

S Park at Buick

W Badger at South Transfer

W Badger at Cypress

W Badger at Fiedler

Fish Hatchery at W Badger

Fish Hatchery at Emil

Fish Hatchery at Greenway

Fish Hatchery at Ochalla

Fish Hatchery at Post

Fish Hatchery at Traceway

Fish Hatchery at High Ridge

Fish Hatchery at Caddis

Cahill at Caddis

B Bus time schedules and route maps are available in an offline PDF at busmaps.com. Use the busmaps.com website to see live bus times, train schedule or subway schedule, and step-by-step directions for all public transit in Madison

The schedule is provided in the local timezone. Times with "(+1)" indicate departures on the next day.

PDF file created on 2025-01-16

2024 BusMaps.com - All Rights Reserved