

**School Bus 2495 All Saints College St Marys Campus to Greta**

[Go to website](#)

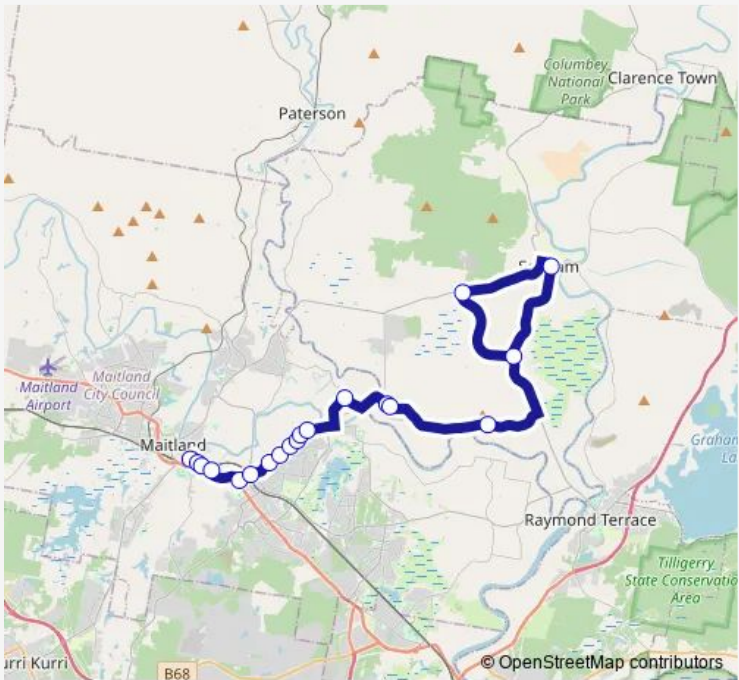
**Direction**  
 All Saints' College, St Mary's Campus, Bent St — Brandy Hill Dr At Seaham Rd  
 19 stops  
[Open route schedule](#)

- All Saints' College, St Mary's Campus, Bent St
- High St Opp Ward St
- High St Opp Sparke St
- High St Opp Maitland Visitor Information Centre
- Melbourne St At Tyrell St
- Melbourne St Opp East Maitland Station
- 82 Morpeth Rd
- Morpeth Rd Opp Linuwel School
- Morpeth Rd Opp Jenna Dr
- Morpeth Rd Opp 267
- Morpeth Rd At Brush Farm Rd
- Morpeth Rd Opp Raworth Av
- Lawlers Rd At Phoenix Park Rd (Hail And Ride)
- Paterson St Opp Hinton Public School (Hail And Ride)
- Hinton School Of Arts, Hinton Rd (Hail And Ride)
- Mount Kanway Public School, Hinton Rd
- Warren St Opp Seaham Public School
- Brandy Hill Dr At Clarence Town Rd (Hail And Ride)
- Brandy Hill Dr At Seaham Rd

**Route schedule**  
 All Saints' College, St Mary's Campus, Bent St — Brandy Hill Dr At Seaham Rd

Monday	16:10
Tuesday	16:10
Wednesday	—
Thursday	16:10
Friday	16:10
Saturday	—
Sunday	—

**Route info**  
 Direction: All Saints' College, St Mary's Campus, Bent St  
 Stops: 19  
 Trip Duration: 0 hour 45 min



2495 School Bus time schedules and route maps are available in an offline PDF at [busmaps.com](https://busmaps.com). Use the [busmaps.com](https://busmaps.com) website to see live bus times, train schedule or subway schedule, and step-by-step directions for all public transit in Maitland

The schedule is provided in the local timezone. Times with "(+1)" indicate departures on the next day.

PDF file created on 2025-01-16

2024 BusMaps.com - All Rights Reserved