



Direction

arung Nasi Uduk Mang Apong — arung Nasi Uduk Mang Apong

44 stops

[Open route schedule](#)

arung Nasi Uduk Mang Apong

Giant Yasmin

Pengadilan Agama Kota Bogor

Lotteria Pondok Yasmin

Masjid Raya Taman Cimanggu

Jl. Taman Cimanggu Tengah

Jl. Taman Sari 3

Taman Boulevard

Jl. Akasia Raya

Kios Sayur Inti Dapur

SDN Cimanggu

Indomaret Cimanggu Perikanan

Kedai Traveler

Balai Besar Litbang Sdlp

Masjid Martadinata

Dinas Sosial Bogor

Jl. Ciaringin li

Pasar Maar

Jl. Mayor Oking

Stasiun Bogor

Bank BJB - Stasiun Bogor

Route schedule

arung Nasi Uduk Mang Apong — arung Nasi Uduk Mang Apong

Monday 00:00-23:50

Tuesday 00:00-23:50

Wednesday 00:00-23:50

Thursday 00:00-23:50

Friday 00:00-23:50

Saturday 00:00-23:50

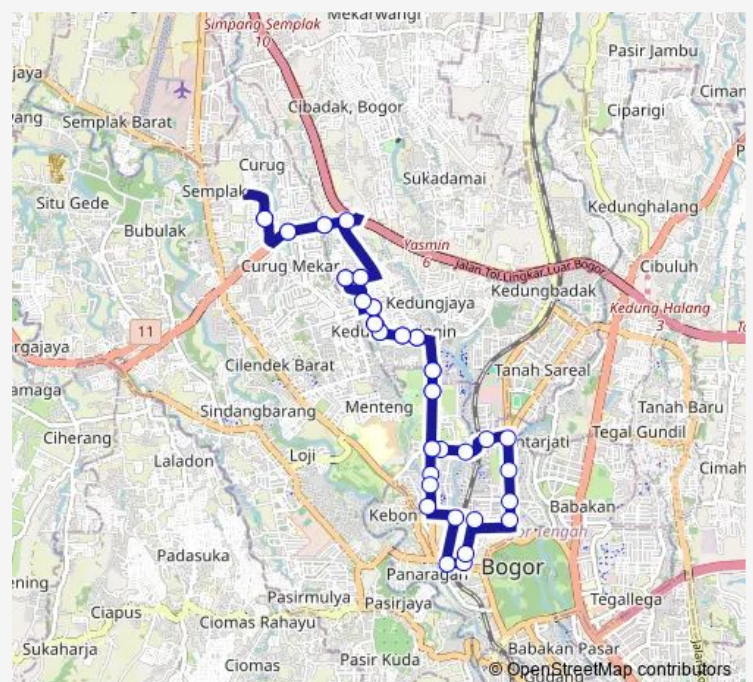
Sunday 00:00-23:50

Route info

Direction: arung Nasi Uduk Mang Apong

Stops: 44

Trip Duration: 0 hour 43 min



AK-11

Bank BRI Bogor

Pasar Anyar

RS. Salak Bogor

Sudirman 1

Monumen & Museum Peta

Air Mancur Fountain Park

Samudra Auto Center

Jembatan RE. Martadinata

Kantor Lurah Ciaringin

Masjid Martadinata

Balai Besar Litbang Sdlp

Kedai Traveler

Indomaret Cimanggu Perikanan

SDN Cimanggu

Kios Sayur Inti Dapur

Jl. Akasia Raya

Taman Boulevard

Jl. Taman Sari 3

Jl. Taman Cimanggu Tengah

Masjid Raya Taman Cimanggu

Pengadilan Agama Kota Bogor

Giant Yasmin

arung Nasi Uduk Mang Apong

AK-11 Bus time schedules and route maps are available in an offline PDF at busmaps.com. Use the busmaps.com website to see live bus times, train schedule or subway schedule, and step-by-step directions for all public transit in Cibinong

The schedule is provided in the local timezone. Times with "(+1)" indicate departures on the next day.

PDF file created on 2025-01-16

2024 BusMaps.com - All Rights Reserved