

## Bus BASF Kläranlage

[Go to website](#)

### Direction

Basf, Kläranlage extern — Ludwigshafen, Basf Tor 12

2 stops

[Open route schedule](#)

Basf, Kläranlage extern

Ludwigshafen, Basf Tor 12

### Route schedule

Basf, Kläranlage extern — Ludwigshafen, Basf Tor 12

Monday 05:45-18:00

Tuesday 05:45-18:00

Wednesday 05:45-18:00

Thursday 05:45-18:00

Friday 05:45-18:00

Saturday 05:40-17:40

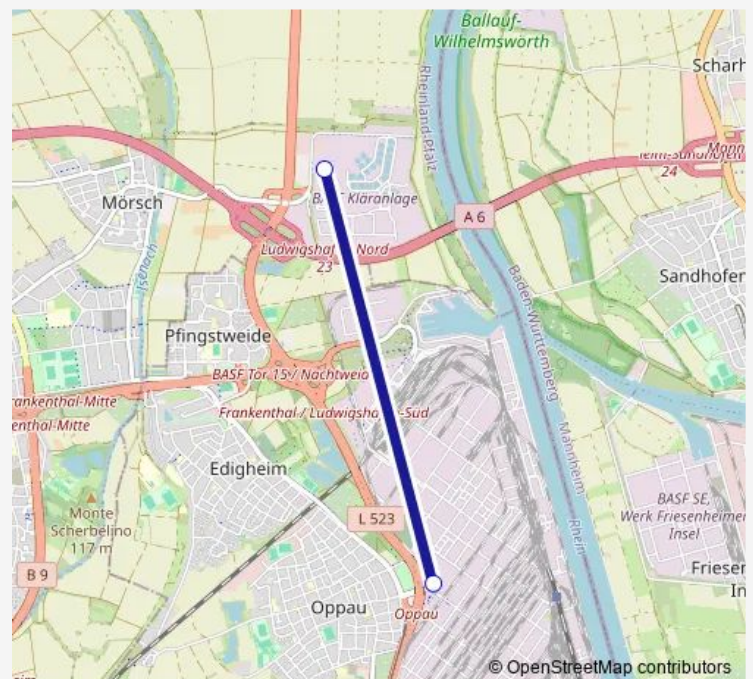
Sunday 05:40-17:40

### Route info

Direction: Basf, Kläranlage extern

Stops: 2

Trip Duration: 0 hour 10 min



■ BASF Kläranlage

**Direction**

Ludwigshafen, Basf Tor 12 — Basf, Kläranlage extern

2 stops

[Open route schedule](#)

Ludwigshafen, Basf Tor 12

BASF, Kläranlage extern

**Route schedule**

Ludwigshafen, Basf Tor 12 — Basf, Kläranlage extern

Monday	05:30-18:10
Tuesday	05:30-18:10
Wednesday	05:30-18:10
Thursday	05:30-18:10
Friday	05:30-18:10
Saturday	05:30-17:10
Sunday	05:30-17:10

**Route info**

Direction: Ludwigshafen, Basf Tor 12

Stops: 2

Trip Duration: 0 hour 10 min

BASF Kläranlage Bus time schedules and route maps are available in an offline PDF at [busmaps.com](https://busmaps.com). Use the [busmaps.com](https://busmaps.com) website to see live bus times, train schedule or subway schedule, and step-by-step directions for all public transit in Frankenthal

The schedule is provided in the local timezone. Times with "(+1)" indicate departures on the next day.

PDF file created on 2025-01-16

2024 BusMaps.com - All Rights Reserved