

## Bus N19 Nachtbus Halle - Bielefeld Nachtbus Halle - Bielefeld

[Go to website](#)

### Direction

Bielefeld, Jahnplatz Steig A — Halle, Bahnhof/Zob

12 stops

[Open route schedule](#)

Bielefeld, Jahnplatz Steig A

Bielefeld, Klosterstraße

Bielefeld, Kunsthalle

Halle-Künsebeck, Lindemann

Halle-Künsebeck, Hartmann

Halle-Künsebeck, Abzw. Bahnhof

Halle, Sandkamp

Halle, Gartnisch

Halle, Berliner Straße

Halle, Alter Markt

Halle, Werther Straße

Halle, Bahnhof/Zob

### Route schedule

Bielefeld, Jahnplatz Steig A — Halle, Bahnhof/Zob

Monday

—

Tuesday

01:05-04:05

Wednesday

—

Thursday

—

Friday

—

Saturday

01:05-04:05

Sunday

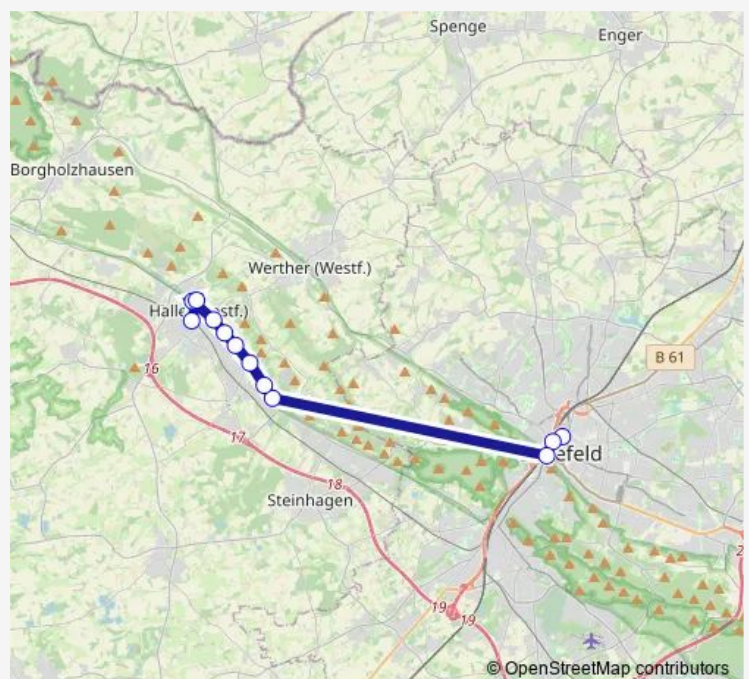
01:05-04:05

### Route info

Direction: Bielefeld, Jahnplatz Steig A

Stops: 12

Trip Duration: 0 hour 28 min



■ N19 — Nachtbus Halle - Bielefeld Nachtbus Halle - Bielefeld

## Direction

Halle, Bahnhof/ZOB 4 — Bielefeld, Jahnplatz Steig A

11 stops

[Open route schedule](#)

Halle, Bahnhof/ZOB 4

Halle, Gymnasium

Halle, Maschweg

Halle (Westf), Droste-Hülshoff-Weg

Halle-Künsebeck, Friedlandstr

Halle-Künsebeck, Helmholtzstr

Halle-Künsebeck, Talstraße

Halle-Künsebeck, Grundschule

Bielefeld, Kunsthalle

Bielefeld, Notpfortenstraße

Bielefeld, Jahnplatz Steig A

## Route schedule

Halle, Bahnhof/ZOB 4 — Bielefeld, Jahnplatz Steig A

Monday	—
Tuesday	01:35-04:35
Wednesday	—
Thursday	—
Friday	—
Saturday	01:35-04:35
Sunday	01:35-04:35

## Route info

Direction: Halle, Bahnhof/ZOB 4

Stops: 11

Trip Duration: 0 hour 24 min

N19 Bus time schedules and route maps are available in an offline PDF at [busmaps.com](https://busmaps.com). Use the [busmaps.com](https://busmaps.com) website to see live bus times, train schedule or subway schedule, and step-by-step directions for all public transit in Halle

The schedule is provided in the local timezone. Times with "(+1)" indicate departures on the next day.

PDF file created on 2025-01-16

2024 BusMaps.com - All Rights Reserved