

Bus 鯉川地区ふれあいバス

[Go to website](#)

Direction

鹿渡駅 — 湖東厚生病院

2 stops

[Open route schedule](#)

鹿渡駅

湖東厚生病院

Route schedule

鹿渡駅 — 湖東厚生病院

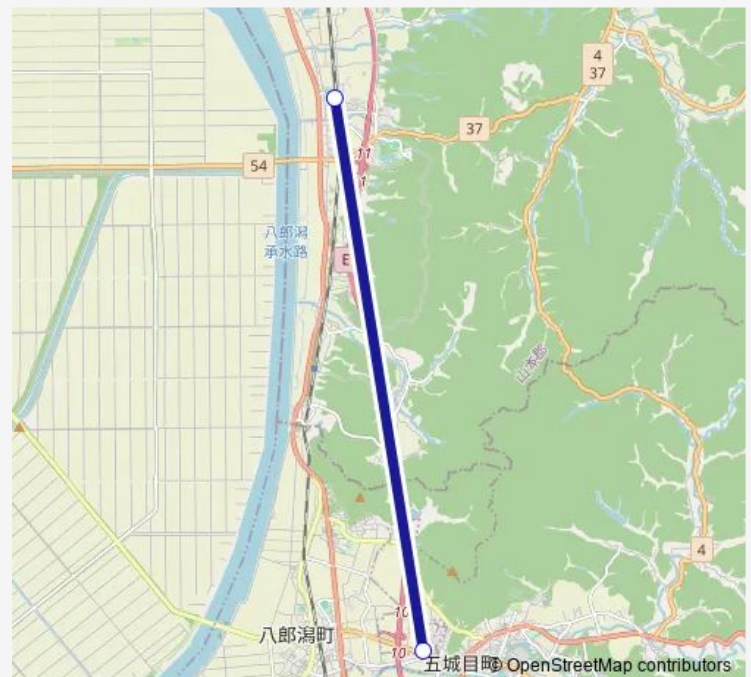
Monday	08:05
Tuesday	08:05
Wednesday	08:05
Thursday	08:05
Friday	08:05
Saturday	—
Sunday	—

Route info

Direction: 鹿渡駅

Stops: 2

Trip Duration: 0 hour 20 min



鯉川地区ふれあいバス Bus time schedules and route maps are available in an offline PDF at busmaps.com. Use the busmaps.com website to see live bus times, train schedule or subway schedule, and step-by-step directions for all public transit in Katagami

The schedule is provided in the local timezone. Times with "(+1)" indicate departures on the next day.

PDF file created on 2025-02-26

2024 BusMaps.com - All Rights Reserved