

Bus K904 Salitre Greco

[Go to website](#)

Direction

CL 185 - KR 2 Este La Estrellita — CL 185 - KR 2 Este La Estrellita

65 stops

[Open route schedule](#)

CL 185 - KR 2 Este La Estrellita

KR 2 Este - CL 186b

KR 2 - CL 188

KR 2 - CL 189 Bis

KR 4 - CL 190

KR 4 - CL 189a

KR 4 - CL 188

KR 4 - CL 185 B

KR 6 - CL 182

KR 6 - CL 179

CL 175 - KR 7

AK 7 - CL 174

AK 7 - CL 171a

AK 7 - CL 166

AK 7 - CL 165

AK 7 - CL 163a

AK 7 - CL 159c

AK 7 - CL 156

AK 7 - CL 153

AK 7 - CL 150

AK 7 - CL 147

Route schedule

CL 185 - KR 2 Este La Estrellita — CL 185 - KR 2 Este La Estrellita

Monday 04:00-22:00

Tuesday 04:00-22:00

Wednesday 04:00-22:00

Thursday 04:00-22:00

Friday 04:00-22:00

Saturday 04:00-22:00

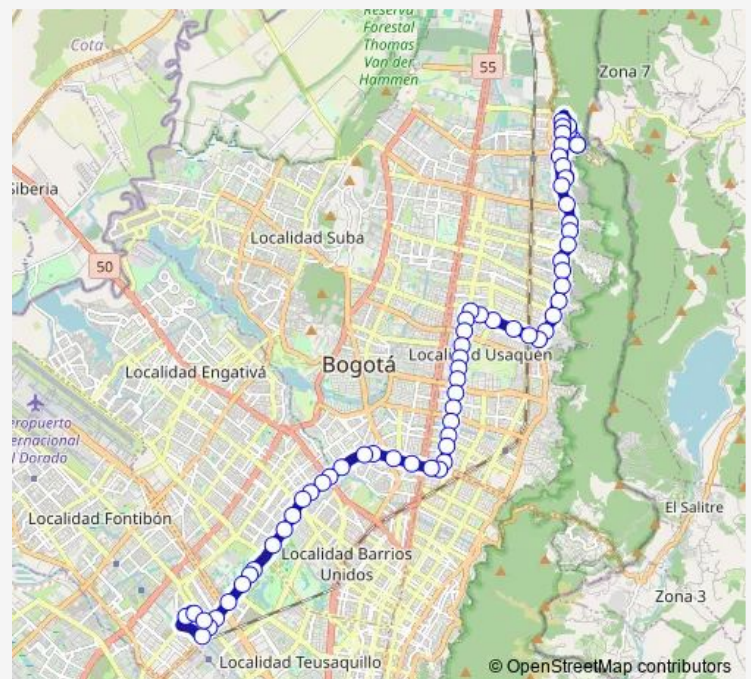
Sunday 05:00-21:00

Route info

Direction: CL 185 - KR 2 Este La Estrellita

Stops: 65

Trip Duration: 4 hour 39 min



K904 — Salitre Greco

AK 7 - CL 144

CL 140 - KR 7a

CL 140 - KR 7c

CL 140 - KR 11

CL 140 - KR 13

CL 140 - KR 16a

CL 140 - KR 18a

AK 19 - CL 137

AK 19 - AC 134

AK 19 - AC 131

AK 19 - CL 128b

AK 19 - CL 127c

AK 19 - CL 127a

AK 19 - CL 126

AK 19 - CL 118

AK 19 - CL 114

AK 19 - CL 106a

AK 19 - CL 104

AK 19 - AC 100

AC 100 - KR 19a

AC 100 - KR 21

AC 100 - KR 47a

AC 100 - TV 55

AC 100 - KR 61

AC 100 - KR 65

AK 68 - CL 95

AK 68 - AC 80

AK 68 - AC 80

AK 68 - CL 76a

AK 68 - AC 72

AK 68 - CL 68b

AK 68 - AC 66

AK 68 - AC 63

AK 68 - AC 63

AK 68 - CL 49a

AK 68 - CL 49

AK 68 - CL 44

AK 68 - AC 26

AK 68 - AV. Esperanza

AK 68 - CL 22a

KR 68D - CL 22b

AV. Esperanza - KR 68b

AV. Esperanza - KR 68a

CL 185 - KR 2 Este La Estrellita

K904 Bus time schedules and route maps are available in an offline PDF at busmaps.com. Use the busmaps.com website to see live bus times, train schedule or subway schedule, and step-by-step directions for all public transit in Bogota

The schedule is provided in the local timezone. Times with "(+1)" indicate departures on the next day.

PDF file created on 2025-02-26

2024 BusMaps.com - All Rights Reserved