

### Direction

足助病院 — 梨野大下り

11 stops

[Open route schedule](#)

足助病院

東大見集会所

東大見sb待合所

深山茶屋

中之神社前

御内本郷下

金蔵連

田ノ土里

梨野上

梨野下

梨野大下り

### Route schedule

足助病院 — 梨野大下り

Monday 14:30

Tuesday —

Wednesday 13:00

Thursday —

Friday —

Saturday —

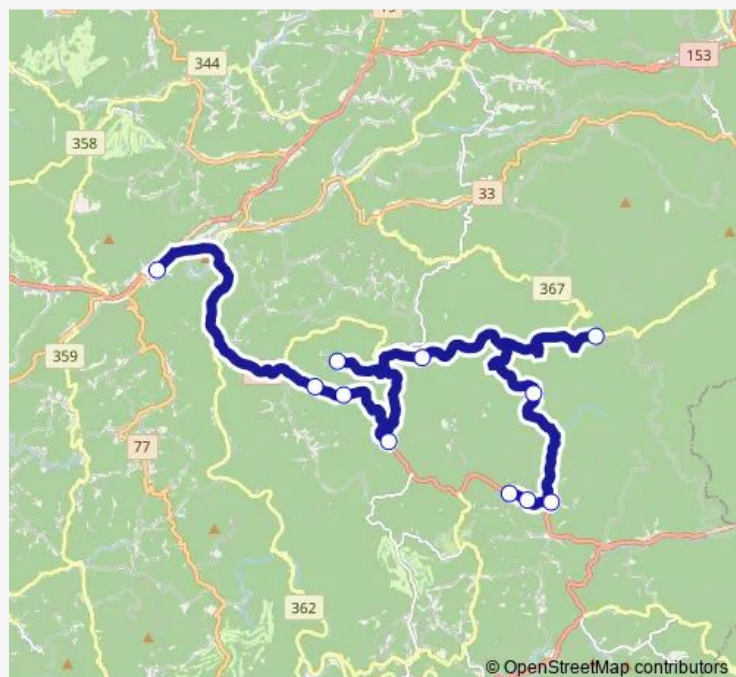
Sunday —

### Route info

Direction: 足助病院

Stops: 11

Trip Duration: 0 hour 48 min



Bus time schedules and route maps are available in an offline PDF at [busmaps.com](https://busmaps.com). Use the [busmaps.com](https://busmaps.com) website to see live bus times, train schedule or subway schedule, and step-by-step directions for all public transit in Toyota

The schedule is provided in the local timezone. Times with "(+1)" indicate departures on the next day.

PDF file created on 2025-01-16

2024 BusMaps.com - All Rights Reserved