

Direction

Poli | Piazzale Orziere # f12070 — ROMA | Ponte Mammolo (Metro B) # f9021

31 stops

[Open route schedule](#)

Poli | Piazzale Orziere # f12070

Poli | Via Roma (Salita Cadipozze) # f12071

Poli | Largo Innocenzo Xiii # f12085

Poli | Cimitero # f12087

Poli | Via Polense (Km 37) # f12088

Poli | Via Polense (Km 36) # f12089

Poli | Via Polense (Km 35) # f12090

Poli | Via Gallicanense (Colle Spina) # f12104

Poli | Ficozzivoli # f12105

Roma | Via Campo Grazia # f12106

Galliciano | Via Poli, 220 # f12107

Galliciano | Via Poli Via Traglione # f12108

Galliciano | Via Poli Via Caipoli # f12109

Galliciano | viale Aldo Moro 44 # f11023

Galliciano | via Aldo Moro civ. 142 # f11025

Galliciano | Viale Aldo Moro # f12111

Galliciano | Via Sant'Antonio # f12110

Galliciano | Via Colle Afri Via Mura S. Pastore # f12117

Galliciano | Via Colle Afri Via Mura S. Pastore # f12112

Galliciano | Via Pedemontana (Colle Afri) # f12113

Galliciano | Via Prenest. Nuova Via Colle Selva # f12114

Route schedule

Poli | Piazzale Orziere # f12070 — ROMA | Ponte Mammolo (Metro B) # f9021

Monday 06:30

Tuesday 04:45-06:30

Wednesday —

Thursday 06:30

Friday 06:30

Saturday 04:45-06:30

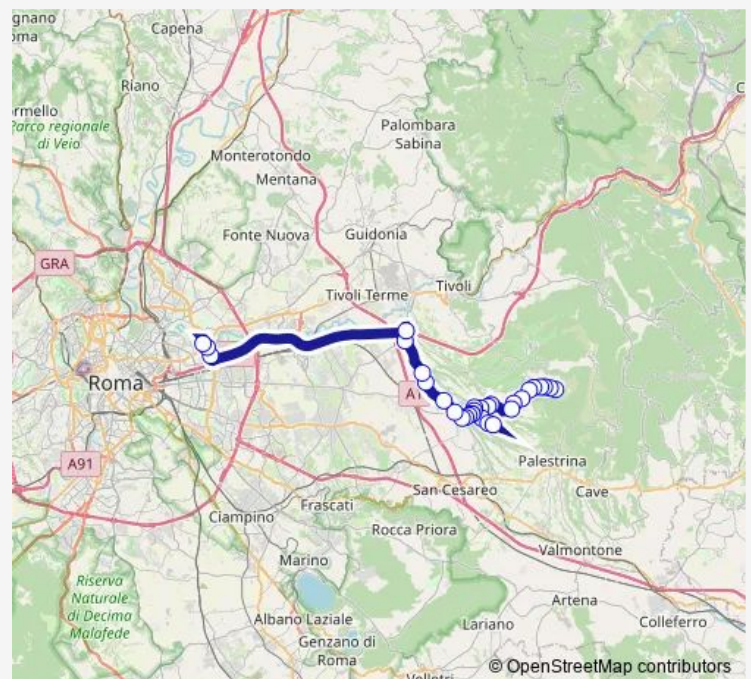
Sunday —

Route info

Direction: Poli | Piazzale Orziere # f12070

Stops: 31

Trip Duration: 1 hour 15 min



Poli - Roma Ponte Mammolo # Tv038a

Gallicano | Via Maremmana Via Prenest. Nuova # f12231

Gallicano | Via Maremmana (Colle Selva II) # f12232

Gallicano | Via Maremmana (Colle Vigne) # f12233

Gallicano | Via Maremmana (Passerano) # f12234

Gallicano | Via Maremmana Via Caipoli # f12235

Roma | Via Polense Via Maremmana # f12237

Tivoli | Via Maremmana Inferiore fronte civ. 102 # f00054

ROMA | Via Togliatti Via D'Onofrio # f9018

ROMA | Via Togliatti Via Alberini # f9020

ROMA | Ponte Mammolo (Metro B) # f9021

Bus time schedules and route maps are available in an offline PDF at busmaps.com. Use the busmaps.com website to see live bus times, train schedule or subway schedule, and step-by-step directions for all public transit in Gallicano nel Lazio

The schedule is provided in the local timezone. Times with "(+1)" indicate departures on the next day.

PDF file created on 2024-12-21

2024 BusMaps.com - All Rights Reserved