



Bus Blue - Around Town

[Go to website](#)

Direction
 Transit Center — Transit Center

39 stops

[Open route schedule](#)

- Transit Center
- Grand / Texas
- Grand / Continental
- Copperidge
- Crest Nursing Home
- Continental Gardens
- Elizabeth Warren / Continental (Big Sky Living)
- The Springs
- Walmart - South Door
- Warren / Sunset
- Water Line / Warren
- Hope / Motor View
- Harrison / Motor View
- Harrison / Holmes
- Butte Plaza Mall
- Highland View Manor
- Busch / Dewey
- Nevada / Dewey (Stodden Park)
- Oregon / Cobban
- Columbus Plaza
- CVS / Stokes

Route schedule

Transit Center — Transit Center

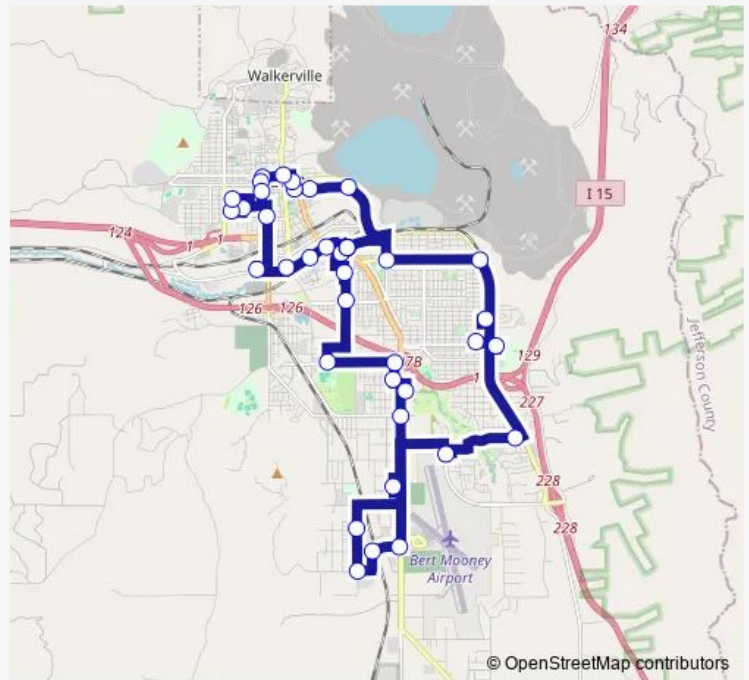
Monday	08:45-14:45
Tuesday	08:45-14:45
Wednesday	08:45-14:45
Thursday	08:45-14:45
Friday	08:45-14:45
Saturday	—
Sunday	—

Route info

Direction: Transit Center

Stops: 39

Trip Duration: 1 hour 25 min



■ Blue - Around Town

Transit Center

Belmont (Continental / Mercury)

Mercury / Ohio

Mercury / Wyoming

Wyoming / Park

Broadway / Main

Broadway / Idaho

Idaho / Park

Mercury Street Medical

St. James Hospital

Alabama / Gold

Silver / Alabama

Montana / Platinum

Community Health Care

Rosalie Manor

Front / California

Front / Arizona

Transit Center

Bus time schedules and route maps are available in an offline PDF at busmaps.com. Use the busmaps.com website to see live bus times, train schedule or subway schedule, and step-by-step directions for all public transit in Butte

The schedule is provided in the local timezone. Times with "(+1)" indicate departures on the next day.

PDF file created on 2025-02-26

2024 BusMaps.com - All Rights Reserved