

Bus Trolley Cold Spring Trolley

[Go to website](#)

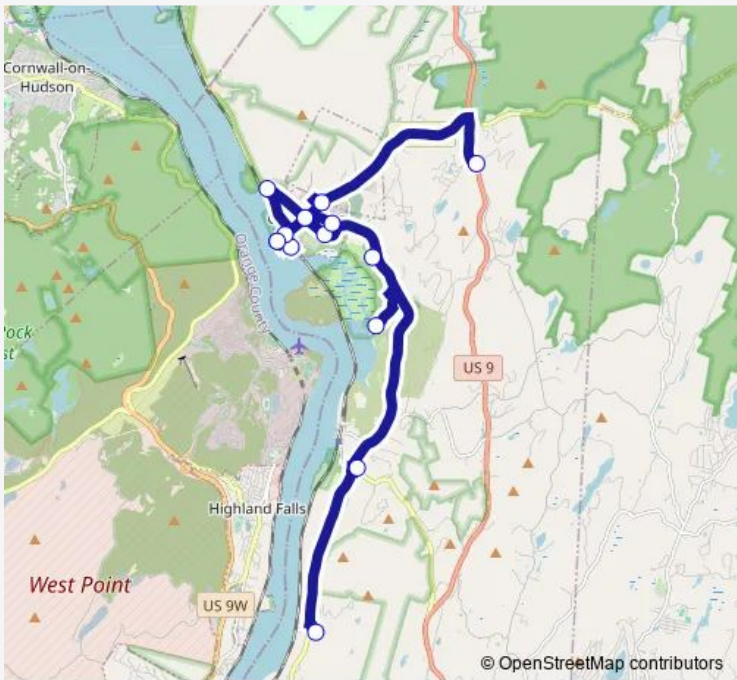
Direction
 Cold Spring Band Stand — Cold Spring Band Stand
 15 stops
[Open route schedule](#)

- Cold Spring Band Stand
- Cold Spring Station
- Col Spring Visitor Center
- Cold Spring Village Hall
- Hiker's Drop Off (Or)
- Main St Cold Spring (9D & Main Street) - outbound
- Putnam History Museum
- Boscobel
- Constitution Marsh Or
- Desmond-Fish Library Or
- Manitoga Or
- Butterfield Center
- Main St Cold Spring (9D & Main Street) - outbound
- Magazzino Italian Art Or
- Cold Spring Band Stand

Route schedule
 Cold Spring Band Stand — Cold Spring Band Stand

| | |
|-----------|-------------|
| Monday | — |
| Tuesday | — |
| Wednesday | — |
| Thursday | — |
| Friday | — |
| Saturday | 09:00-15:00 |
| Sunday | — |

Route info
 Direction: Cold Spring Band Stand
 Stops: 15
 Trip Duration: 1 hour 0 min



■ Trolley — Cold Spring Trolley **BusMaps**

Direction

Cold Spring Band Stand — Cold Spring Band Stand

17 stops

[Open route schedule](#)

Cold Spring Band Stand

Cold Spring Station

Col Spring Visitor Center

Cold Spring Village Hall

Main St Cold Spring (9D & Main Street) - outbound

Boscobel

Main St Cold Spring (9D & Main Street) - outbound

Little Stony Point

Breakneck Ridge (Wilkinson Trail)

Mount Beacon Trailhead

Main Street Beacon

Beacon Train Station

DIA Museum

Breakneck Ridge (Wilkinson Trail Or)

Little Stony Point (Or)

Main St Cold Spring (9D & Main Street OR) - inbound

Cold Spring Band Stand

Route schedule

Cold Spring Band Stand — Cold Spring Band Stand

| | |
|-----------|-------------|
| Monday | — |
| Tuesday | — |
| Wednesday | — |
| Thursday | — |
| Friday | — |
| Saturday | 12:00-16:12 |
| Sunday | — |

Route info

Direction: Cold Spring Band Stand

Stops: 17

Trip Duration: 0 hour 48 min

Trolley Bus time schedules and route maps are available in an offline PDF at busmaps.com. Use the busmaps.com website to see live bus times, train schedule or subway schedule, and step-by-step directions for all public transit in Cold Spring

The schedule is provided in the local timezone. Times with "(+1)" indicate departures on the next day.

PDF file created on 2025-01-16

2024 BusMaps.com - All Rights Reserved