

**Direction**  
 Central Transfer Point (6th Ave S) — Central Transfer Point (6th Ave S)

39 stops

[Open route schedule](#)

- Central Transfer Point (6th Ave S)
- 6th and 3rd St S
- 6th and 5th St S
- 6th Ave and 7th St S
- 7th Avenue South and 8th Street
- 7th Ave and Argyle Ct
- 7th Ave and Douglas Ct
- Mercy South Bluff Blvd and 7th Ave
- Bluff Blvd and Elmhurst Ct
- Bluff Blvd and Terrace Dr
- 8th Ave and Orchard Ln
- 8th Ave and 16th St S
- 8th Ave and 17th St S
- 8th Ave and 18th St S
- 18th St and East Ln
- College Ave and Dubuque Ct
- College Ave and S Bluff Blvd
- Bluff Blvd and 19th St S
- Bluff Blvd South
- Harts Mill Road and South 22nd Street
- Harts Mill Rd and Windsor Dr

Route schedule

Central Transfer Point (6th Ave S) — Central Transfer Point (6th Ave S)

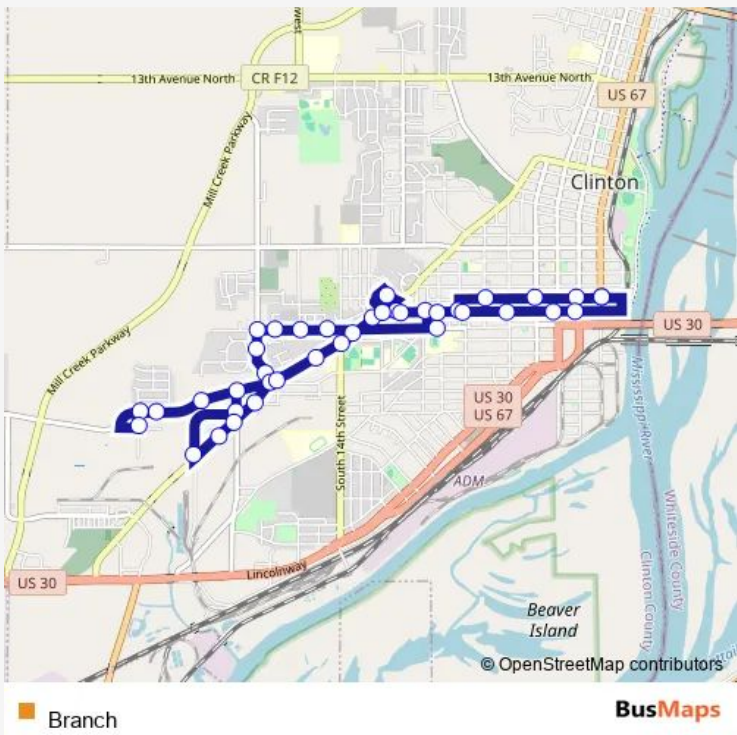
Monday	06:00-17:30
Tuesday	06:00-17:30
Wednesday	06:00-17:30
Thursday	06:00-17:30
Friday	06:00-17:30
Saturday	09:30-12:30
Sunday	—

**Route info**

Direction: Central Transfer Point (6th Ave S)

Stops: 39

Trip Duration: 0 hour 27 min



Windsor Dr and 16th Ave S

19th St and 15th Ave S

Skyline and South 21st Street

Manufacturing Dr and Manufacturing Ct

Manufacturing Dr and 19th St S

Manufacturing Dr and 18th

Bluff Blvd and 17th St S

Bluff Elementary School

Bluff Blvd and S 14th St

8th Avenue South and 9th Street

Bluff Blvd and 7th Ave S

7th Ave and Melrose Ct

Clinton HS and S 9th St

7th Ave and 8th St S

7th Ave and 6th St S

7th Ave and 4th St S

Ymca

Central Transfer Point (6th Ave S)

Branch Bus time schedules and route maps are available in an offline PDF at [busmaps.com](https://busmaps.com). Use the [busmaps.com](https://busmaps.com) website to see live bus times, train schedule or subway schedule, and step-by-step directions for all public transit in Clinton

The schedule is provided in the local timezone. Times with "(+1)" indicate departures on the next day.

PDF file created on 2025-01-16

2024 BusMaps.com - All Rights Reserved