

School Bus 2245 All Saints College St Peters Campus to Johnsons Farm Gate

[Go to website](#)

**Direction**

St Peters Maitland, High St — Glen William Rd Opp Pine Brush Rd

25 stops

[Open route schedule](#)

- St Peters Maitland, High St
- High St At Hunter St
- Maitland Regional Art Gallery, High St
- High St Opp Ward St
- High St Opp Sparke St
- High St Opp Maitland Visitor Information Centre
- Melbourne St At Tyrell St
- Melbourne St Opp East Maitland Station
- Maitland Grossmann High School, Cumberland St
- Hodge St At High St
- Maitland High School, Hunter St
- Metford Rd At Collinson St
- Metford Rd After Robert St
- Tank St After Canterbury Dr
- Tank St Opp High St
- Mount Kanway Public School, Hinton Rd
- Seaham Rd At Brandy Hill Dr
- Brandy Hill Rd Opp Eloura Cl
- Brandy Hill Dr At Werai Cl
- Clarence Town Rd Opp Brandy Hill Dr

Route schedule

St Peters Maitland, High St — Glen William Rd Opp Pine Brush Rd

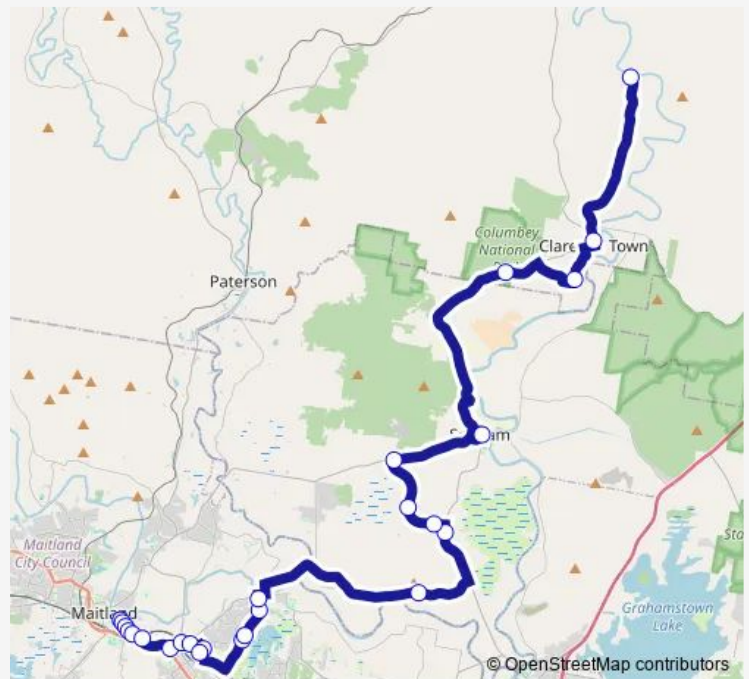
Monday	15:40
Tuesday	15:40
Wednesday	15:40
Thursday	15:40
Friday	15:40
Saturday	—
Sunday	—

Route info

Direction: St Peters Maitland, High St

Stops: 25

Trip Duration: 1 hour 16 min



2245 — All Saints College St Peters Campus to Johnsons Farm Gate

Warren St Opp Seaham Public School

Clarence Town Rd At Tower Rd (Hail And Ride)

Fotheringay Rd After Williams River Cl

Grey St At Prince St (Hail And Ride)

Glen William Rd Opp Pine Brush Rd

2245 School Bus time schedules and route maps are available in an offline PDF at [busmaps.com](https://busmaps.com). Use the [busmaps.com](https://busmaps.com) website to see live bus times, train schedule or subway schedule, and step-by-step directions for all public transit in Maitland

The schedule is provided in the local timezone. Times with "(+1)" indicate departures on the next day.

PDF file created on 2025-01-16

2024 BusMaps.com - All Rights Reserved