

Bus 5 Chapelle ST LUC Fouchy-Saint Germain

[Go to website](#)

Direction

Fouchy — ST Germain Courc.

34 stops

[Open route schedule](#)

- Fouchy
- Parc Pierre Pitois
- Digue DE Fouchy
- Chaumard
- Demi Lune
- Securite Sociale
- Brocard
- Tamaris
- Billotte
- Jacquard
- Tourterelles
- Theatre DE Champ.
- Vallee Suisse
- Gare Jardins
- Patte D'Oie
- Parc Expos LE Cube
- Didier
- Tilleuls
- Maugout
- Baltet
- M. Baroin

Route schedule

Fouchy — ST Germain Courc.

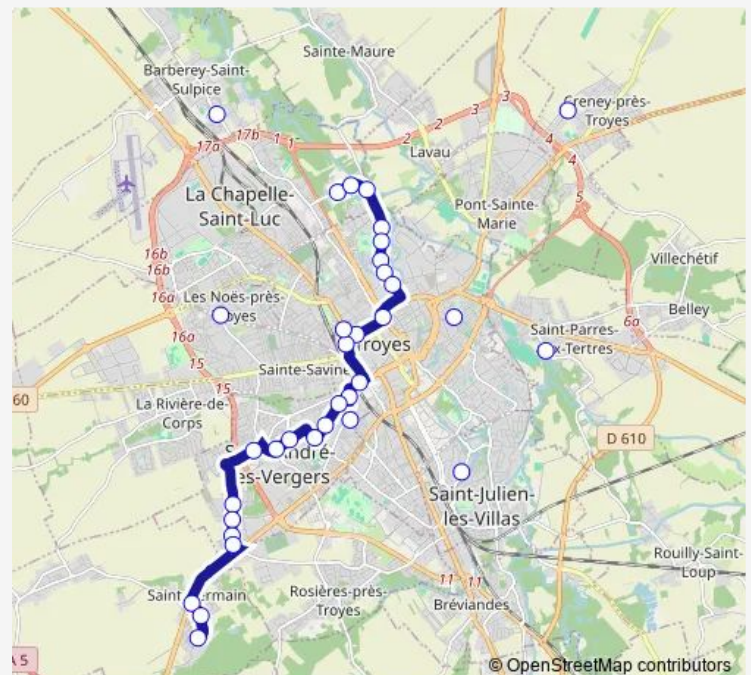
Monday	05:55-19:29
Tuesday	05:55-19:29
Wednesday	05:55-19:29
Thursday	05:55-19:29
Friday	05:55-19:29
Saturday	06:06-19:46
Sunday	—

Route info

Direction: Fouchy

Stops: 34

Trip Duration: 0 hour 35 min



5 — Chapelle ST LUC Fouchy-Saint Germain

C Cial ST Andre

Mederic

Antes

Caf

Oigny

Comte

Pituites

Perrieres

Parc DE LA Fontaine

Marraud

Mairie ST Germain

Printemps

ST Germain Courc.

Direction

ST Germain Courc. — Fouchy

35 stops

[Open route schedule](#)

ST Germain Courc.

Dufy

Cezanne

Printemps

Mairie ST Germain

Marie DE Champagne

Pont DE L'Arche

Perrieres

Pituities

Comte

Oigny

Caf

Antes

Mederic

C Cial ST Andre

Maitrot

Baltet

Maugout

Tilleuls

Didier

Patton

Gare Jardins

Vallee Suisse

Theatre DE Champ.

Tour

Route schedule

ST Germain Courc. — Fouchy

Monday 06:24-19:50

Tuesday 06:24-19:50

Wednesday 06:24-19:50

Thursday 06:24-19:50

Friday 06:24-19:50

Saturday 06:30-19:55

Sunday —

Route info

Direction: ST Germain Courc.

Stops: 35

Trip Duration: 0 hour 37 min

Jacquard

Billotte

Tamaris

Brossolette

Securite Sociale

Demi Lune

Champagne

Digue DE Fouchy

Parc Pierre Pitois

Fouchy

5 Bus time schedules and route maps are available in an offline PDF at busmaps.com. Use the busmaps.com website to see live bus times, train schedule or subway schedule, and step-by-step directions for all public transit in Troyes

The schedule is provided in the local timezone. Times with "(+1)" indicate departures on the next day.

PDF file created on 2025-01-31

2024 BusMaps.com - All Rights Reserved