

Bus 776 Brockenhurst College - Priestlands School

[Go to website](#)

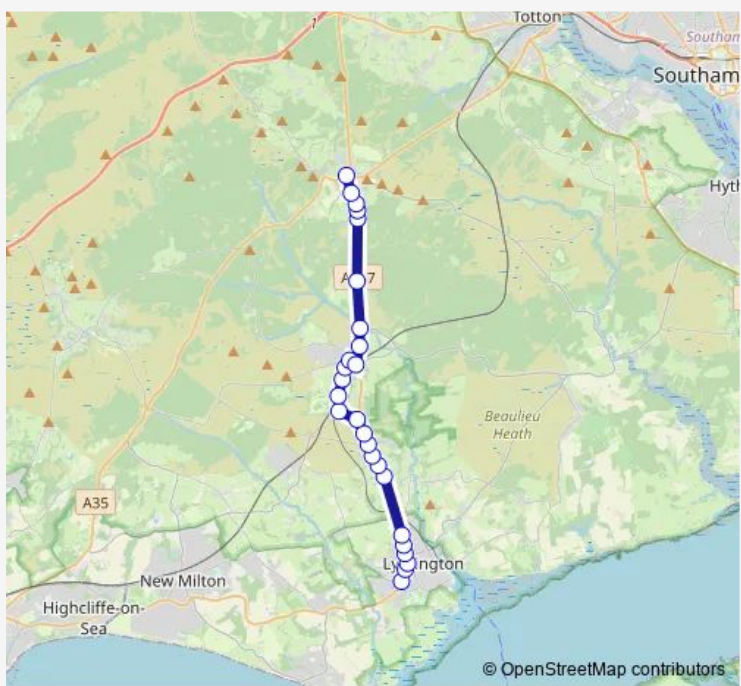
Direction
 Priestlands School — The Crown Hotel
 26 stops
[Open route schedule](#)

- Priestlands School
- Stanford Hill
- Sports Ground
- Queen Elizabeth Avenue
- Alexandra Road
- The Monkey House
- Battramsley Cross
- Boldre Grange
- Rosie Lea House
- The Spinney
- Setley House
- The Filly Inn
- Latchmoor Corner
- Brockenhurst Golf Club
- Collyers Road
- Brockenhurst Primary School
- Gates Garage
- Brockenhurst Station
- Brockenhurst College
- Balmer Lawn Hotel
- New Park

Route schedule
 Priestlands School — The Crown Hotel

Monday	15:30
Tuesday	15:30
Wednesday	15:30
Thursday	15:30
Friday	15:30
Saturday	—
Sunday	—

Route info
 Direction: Priestlands School
 Stops: 26
 Trip Duration: 0 hour 31 min



776 — Brockenhurst College - Priestlands School **BusMaps**

Clay Hill Schools

The Crown Stirrup

Foxlease

Goose Green

The Crown Hotel

Direction

Brockenhurst College — Priestlands School

20 stops

[Open route schedule](#)

Brockenhurst College

Brockenhurst Station

The Foresters Arms

Gates Garage

Brockenhurst Primary School

Collyers Road

Brockenhurst Golf Club

Latchmoor Corner

The Filly Inn

Setley House

The Spinney

Rosie Lea House

Boldre Grange

Battramsley Cross

The Monkey House

Alexandra Road

Queen Elizabeth Avenue

Sports Ground

Priestlands Place

Priestlands School

Route schedule

Brockenhurst College — Priestlands School

Monday 08:01

Tuesday 08:01

Wednesday 08:01

Thursday 08:01

Friday 08:01

Saturday —

Sunday —

Route info

Direction: Brockenhurst College

Stops: 20

Trip Duration: 0 hour 19 min

776 Bus time schedules and route maps are available in an offline PDF at busmaps.com. Use the busmaps.com website to see live bus times, train schedule or subway schedule, and step-by-step directions for all public transit in Southampton

The schedule is provided in the local timezone. Times with "(+1)" indicate departures on the next day.

PDF file created on 2025-01-16

2024 BusMaps.com - All Rights Reserved