

Ferry RCH Richmond

[Go to website](#)

Direction

San Francisco Ferry Building Gate E — Richmond Ferry Terminal

2 stops

[Open route schedule](#)

San Francisco Ferry Building Gate E

Richmond Ferry Terminal

Route schedule

San Francisco Ferry Building Gate E — Richmond Ferry Terminal

Monday 07:15-20:05

Tuesday 07:15-20:05

Wednesday 07:15-20:05

Thursday 07:15-20:05

Friday 07:15-20:05

Saturday —

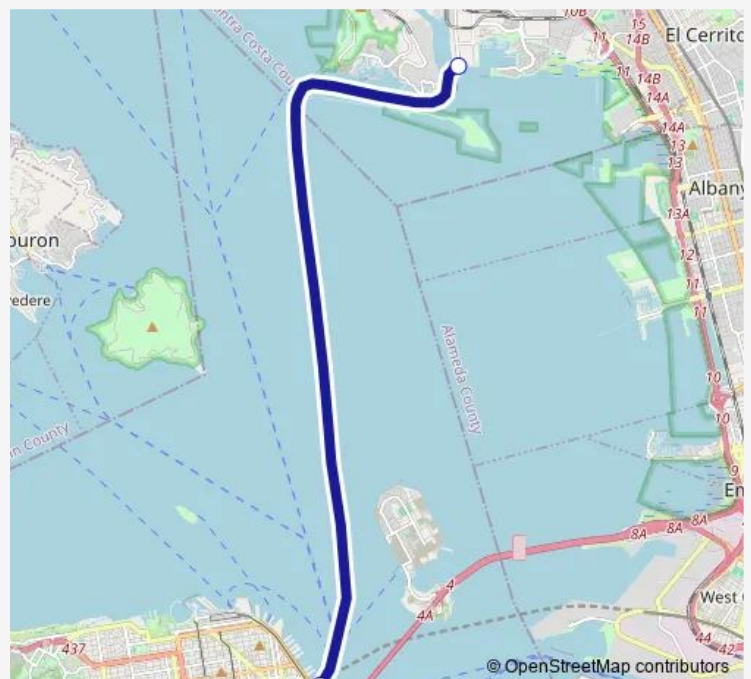
Sunday —

Route info

Direction: San Francisco Ferry Building Gate E

Stops: 2

Trip Duration: 0 hour 35 min



RCH — Richmond

Direction

San Francisco Ferry Building Gate F — Richmond Ferry Terminal

2 stops

[Open route schedule](#)

San Francisco Ferry Building Gate F

Richmond Ferry Terminal

Route schedule

San Francisco Ferry Building Gate F — Richmond Ferry Terminal

Monday	—
Tuesday	—
Wednesday	—
Thursday	—
Friday	—
Saturday	11:15-20:10
Sunday	11:15-20:10

Route info

Direction: San Francisco Ferry Building Gate F

Stops: 2

Trip Duration: 0 hour 35 min

Direction

Richmond Ferry Terminal — San Francisco Ferry Building Gate E

2 stops

[Open route schedule](#)

Richmond Ferry Terminal

San Francisco Ferry Building Gate E

Route schedule

Richmond Ferry Terminal — San Francisco Ferry Building Gate E

Monday 06:30-19:25

Tuesday 06:30-19:25

Wednesday 06:30-19:25

Thursday 06:30-19:25

Friday 06:30-19:25

Saturday —

Sunday —

Route info

Direction: Richmond Ferry Terminal

Stops: 2

Trip Duration: 0 hour 35 min

Direction

Richmond Ferry Terminal — San Francisco Ferry Building Gate G

2 stops

[Open route schedule](#)

Richmond Ferry Terminal

San Francisco Ferry Building Gate G

Route schedule

Richmond Ferry Terminal — San Francisco Ferry Building Gate G

Monday 08:00

Tuesday 08:00

Wednesday 08:00

Thursday 08:00

Friday 08:00

Saturday 20:55

Sunday 20:55

Route info

Direction: Richmond Ferry Terminal

Stops: 2

Trip Duration: 0 hour 35 min

Direction

Richmond Ferry Terminal — San Francisco Ferry Building Gate F

2 stops

[Open route schedule](#)

Richmond Ferry Terminal

San Francisco Ferry Building Gate F

Route schedule

Richmond Ferry Terminal — San Francisco Ferry Building Gate F

Monday 20:25

Tuesday 20:25

Wednesday 20:25

Thursday 20:25

Friday 20:25

Saturday 09:50-18:45

Sunday 09:50-18:45

Route info

Direction: Richmond Ferry Terminal

Stops: 2

Trip Duration: 0 hour 35 min

RCH Ferry time schedules and route maps are available in an offline PDF at busmaps.com. Use the busmaps.com website to see live bus times, train schedule or subway schedule, and step-by-step directions for all public transit in San Francisco

The schedule is provided in the local timezone. Times with "(+1)" indicate departures on the next day.

PDF file created on 2025-01-16

2024 BusMaps.com - All Rights Reserved