

Direction

Millennium Depot Gate 7 — Nizamuddin Railway Station

11 stops

[Open route schedule](#)

Millennium Depot Gate 7

Nizamuddin Road Bridge

Nizamuddin Road Bridge / Cpwd Office

Khel Gaon CWG Village

Nizamuddin Road Bridge

Bala Sahib Gurudwara

Maharani Bagh / Ashram

Maharani Bagh (Ashram)

Ashram (Hari Nagar)

Rojdoot Hotel

Nizamuddin Railway Station

Route schedule

Millennium Depot Gate 7 — Nizamuddin Railway Station

Monday 00:06-23:52

Tuesday 00:06-23:52

Wednesday 00:06-23:52

Thursday 00:06-23:52

Friday 00:06-23:52

Saturday 00:06-23:52

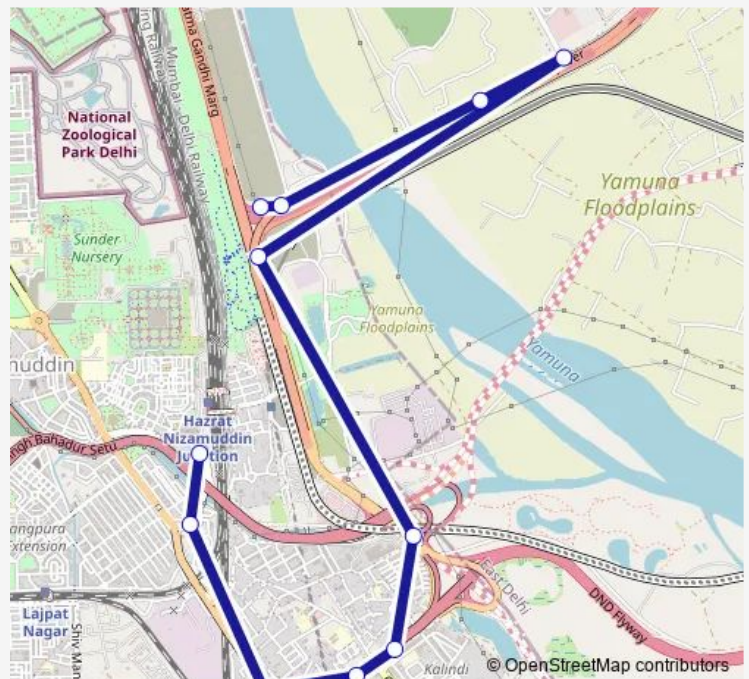
Sunday 00:06-23:52

Route info

Direction: Millennium Depot Gate 7

Stops: 11

Trip Duration: 0 hour 34 min



Bus time schedules and route maps are available in an offline PDF at busmaps.com. Use the busmaps.com website to see live bus times, train schedule or subway schedule, and step-by-step directions for all public transit in New Delhi

The schedule is provided in the local timezone. Times with "(+1)" indicate departures on the next day.

PDF file created on 2025-01-16

2024 BusMaps.com - All Rights Reserved