

### Direction

足助病院 — 国谷集会所前

11 stops

[Open route schedule](#)

足助病院

鏡集会所

広畑

下佐切集会所

上佐切sb待合所

上脇集会所

上佐切集会所

上佐切町神原辻

白倉sb待合所

下国谷集会所

国谷集会所前

### Route schedule

足助病院 — 国谷集会所前

Monday —

Tuesday —

Wednesday 14:30

Thursday —

Friday 13:00

Saturday —

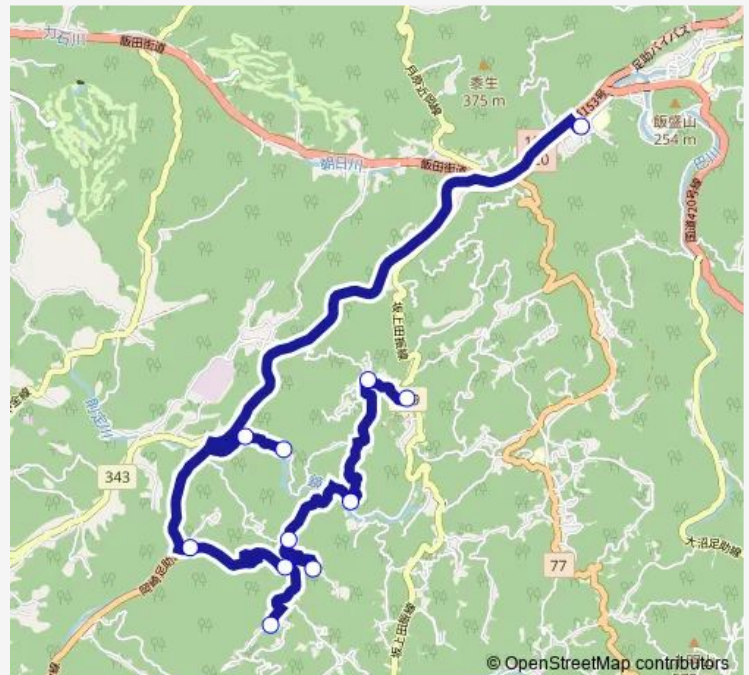
Sunday —

### Route info

Direction: 足助病院

Stops: 11

Trip Duration: 0 hour 34 min



Bus time schedules and route maps are available in an offline PDF at [busmaps.com](https://busmaps.com). Use the [busmaps.com](https://busmaps.com) website to see live bus times, train schedule or subway schedule, and step-by-step directions for all public transit in Toyota

The schedule is provided in the local timezone. Times with "(+1)" indicate departures on the next day.

PDF file created on 2025-01-16

2024 BusMaps.com - All Rights Reserved