

Direction

Spiez, Bahnhof — Interlaken Ost, Bahnhof

3 stops

[Open route schedule](#)

Spiez, Bahnhof

Interlaken West, Bahnhof

Interlaken Ost, Bahnhof

Route schedule

Spiez, Bahnhof — Interlaken Ost, Bahnhof

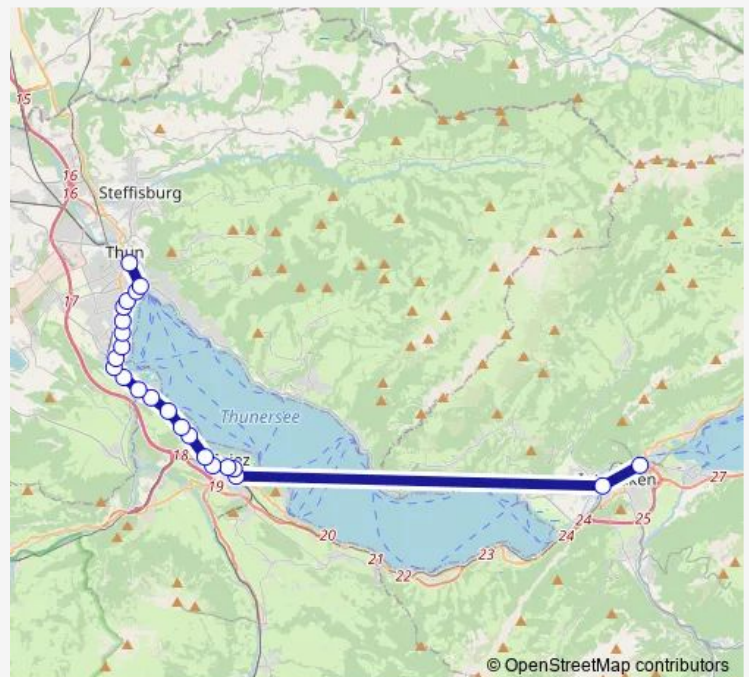
Monday	19:43-00:49 ⁺¹
Tuesday	19:43-00:49 ⁺¹
Wednesday	19:43-00:49 ⁺¹
Thursday	19:43-00:49 ⁺¹
Friday	—
Saturday	—
Sunday	19:43-00:49 ⁺¹

Route info

Direction: Spiez, Bahnhof

Stops: 3

Trip Duration: 0 hour 28 min



Ev

Direction

Interlaken Ost, Bahnhof — Bern, Bahnhof

4 stops

[Open route schedule](#)

Interlaken Ost, Bahnhof

Interlaken West, Bahnhof

Spiez, Bahnhof

Bern, Bahnhof

Route schedule

Interlaken Ost, Bahnhof — Bern, Bahnhof

Monday	23:37
Tuesday	23:37
Wednesday	23:37
Thursday	23:37
Friday	—
Saturday	—
Sunday	23:37

Route info

Direction: Interlaken Ost, Bahnhof

Stops: 4

Trip Duration: 1 hour 13 min

Direction

Interlaken Ost, Bahnhof — Thun, Bahnhof

23 stops

[Open route schedule](#)

Interlaken Ost, Bahnhof

Interlaken West, Bahnhof

Spiez, Bahnhof

Spiez, Krone

Spiez, Oberlandstrasse

Spiez, Spiezmoos

Spiez, Kreuz

Spiez, Längmaad

Spiez, Ghei

Einigen, Teller

Einigen, Dorf

Einigen, Chanderbrügg

Gwatt, Deltapark

Gwatt, Moos

Gwatt, Bonstettenpark

Gwatt, Camping

Thun, Seeblick

Thun, Pfaffenbühl

Thun, Strandbad

Thun, Kkthun

Thun, Seepark

Thun, Scherzligen/Schadau

Thun, Bahnhof

Route schedule

Interlaken Ost, Bahnhof — Thun, Bahnhof

Monday 04:45-23:42

Tuesday 04:45-23:42

Wednesday 04:45-23:42

Thursday 04:45-23:42

Friday 04:45-05:05

Saturday —

Sunday 19:36-23:42

Route info

Direction: Interlaken Ost, Bahnhof

Stops: 23

Trip Duration: 0 hour 50 min

Ev Bus time schedules and route maps are available in an offline PDF at busmaps.com. Use the busmaps.com website to see live bus times, train schedule or subway schedule, and step-by-step directions for all public transit in Thun

The schedule is provided in the local timezone. Times with "(+1)" indicate departures on the next day.

PDF file created on 2025-01-31

2024 BusMaps.com - All Rights Reserved