

Night Bus Service N63

[Go to website](#)

Direction

Winterthur, Reutlingen — Winterthur, Hauptbahnhof

17 stops

[Open route schedule](#)

Winterthur, Reutlingen

Seuzach, Bahnhof

Seuzach, Mörsburgstrasse

Seuzach, Breitestrasse

Seuzach, Forrenbergstrasse

Winterthur, Rosenberg

Winterthur, Schachenweg

Winterthur, Bettenplatz

Winterthur, Friedhof

Winterthur, Loorstrasse

Winterthur, Bachtelstrasse

Winterthur, Brunngasse

Winterthur, Spital

Winterthur, Bezirksgebäude

Winterthur, Stadthaus

Winterthur, Schmidgasse

Winterthur, Hauptbahnhof

Route schedule

Winterthur, Reutlingen — Winterthur, Hauptbahnhof

Monday —

Tuesday —

Wednesday —

Thursday —

Friday 25:09-02:39⁺¹

Saturday 03:09-02:39⁺¹

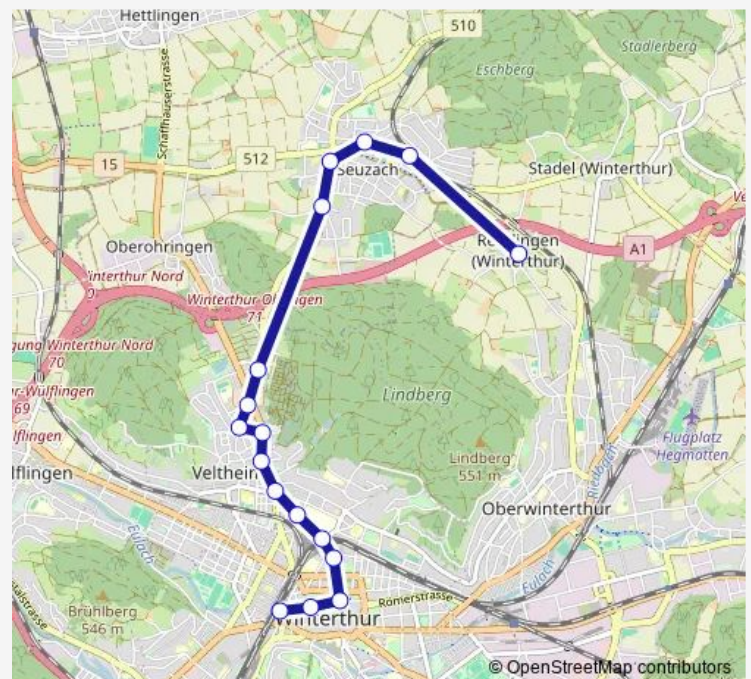
Sunday 03:09-04:39

Route info

Direction: Winterthur, Reutlingen

Stops: 17

Trip Duration: 0 hour 18 min



■ N63

Direction

Winterthur, Hauptbahnhof — Winterthur, Reutlingen

16 stops

[Open route schedule](#)

Winterthur, Hauptbahnhof

Winterthur, Schmidgasse

Winterthur, Stadthaus

Winterthur, Bezirksgebäude

Winterthur, Spital

Winterthur, Brunngasse

Winterthur, Bachtelstrasse

Winterthur, Loorstrasse

Winterthur, Friedhof

Winterthur, Schützenhaus

Winterthur, Rosenberg

Seuzach, Forrenbergstrasse

Seuzach, Breitestrasse

Seuzach, Mörsburgstrasse

Seuzach, Bahnhof

Winterthur, Reutlingen

Route schedule

Winterthur, Hauptbahnhof — Winterthur, Reutlingen

Monday

—

Tuesday

—

Wednesday

—

Thursday

—

Friday

25:03-02:33⁺¹

Saturday

03:03-02:33⁺¹

Sunday

03:03-04:33

Route info

Direction: Winterthur, Hauptbahnhof

Stops: 16

Trip Duration: 0 hour 19 min

N63 Night Bus Service time schedules and route maps are available in an offline PDF at busmaps.com. Use the busmaps.com website to see live bus times, train schedule or subway schedule, and step-by-step directions for all public transit in Winterthur

The schedule is provided in the local timezone. Times with "(+1)" indicate departures on the next day.

PDF file created on 2025-01-31

2024 BusMaps.com - All Rights Reserved