

Bus 191down

[Go to website](#)

Direction

Harewali Gaon — Mori Gate Terminal

58 stops

[Open route schedule](#)

Harewali Gaon

Dariyapur Gaon

Harewali Crossing

daria pur xing

Dariyapur Kalan School

PS Bawana

Bawana Depot

Bawana Depot

Dsidc Office Bawana

Bawana School

Dsidc Bawana/ Dhakewala

Maharishi Valmiki Hospital

Sultan Pur Crossing / Poothkhurd

Barwala Village

Barwala School

Jain Colony

Prehladpur School

Prehladpur Village

Prehlad Pur Mandir

Shahbad Dairy

Shahbad Dairy A Block

Route schedule

Harewali Gaon — Mori Gate Terminal

Monday 05:30-20:45

Tuesday 05:30-20:45

Wednesday 05:30-20:45

Thursday 05:30-20:45

Friday 05:30-20:45

Saturday 05:30-20:45

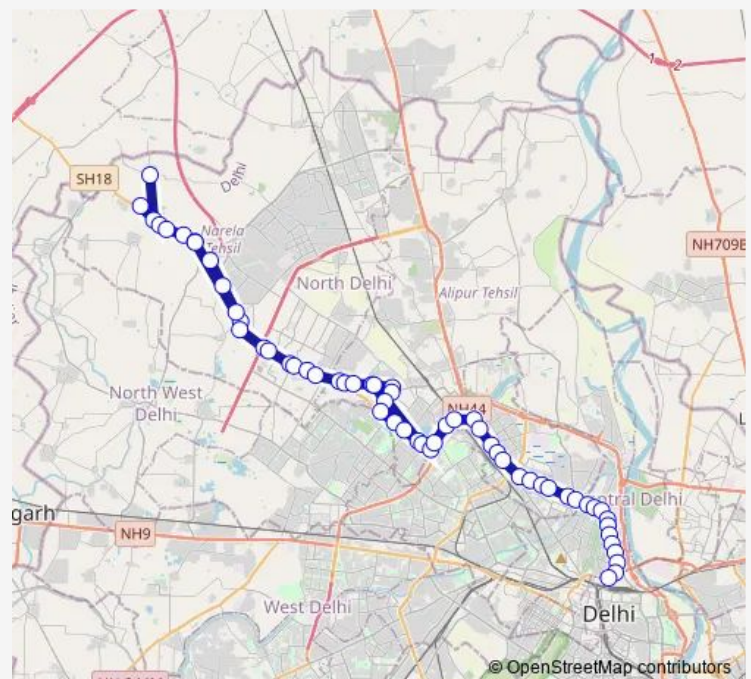
Sunday 05:30-20:45

Route info

Direction: Harewali Gaon

Stops: 58

Trip Duration: 3 hour 6 min



191down

BusMaps

St. Xavier School Shahbad

Shahbad Daulatpur Gaon

Rohini Sec16 Xing

Rohini Sec 16 (Maharaja Aggarsen Dharam Sthal)

Rohini Sec 17A and 16

Rohini Sec11 (Aggarwal Sabha)

Rohini Depotii

ESI Hospital

Vidhya Vihar Marg

Anubhav Apartment

Goodwill Apartment

Prashant Vihar Fblock

Haidarpur Water Works

Badli Crossing

Haiderpur Metro Station

GTK Depot

Jahangir Puri Metro Station

Sarai Pipal Thala

Adarsh Nagar Metro Station

New Sabzi Mandi

Azadpur Terminal

Model Town lii

Model Town li

Alpana Cinema (Model Town Mtr Stn)

New Police Line

GTB Nagar

INS Hostel

Vishwa Vidyalaya Metro Station

Mall Road

Khyber Pass

Vidhan Sabha Metro Station

Old Secretariat (Postal Account Office)

IP College

Exchange Store / Civil Lines Metro Station

Ludlow Castle

Isbt Nityanand Marg

Mori Gate Terminal

191down Bus time schedules and route maps are available in an offline PDF at busmaps.com. Use the busmaps.com website to see live bus times, train schedule or subway schedule, and step-by-step directions for all public transit in Delhi

The schedule is provided in the local timezone. Times with "(+1)" indicate departures on the next day.

PDF file created on 2025-02-26

2024 BusMaps.com - All Rights Reserved