

Bus 84 Pompey LES Vannes Nancy Carnot

[Go to website](#)**Direction**

Les Vannes — Fonds de Lavaux

9 stops

[Open route schedule](#)

Les Vannes

Marronniers

Gambetta

Gasser

10 Septembre

La Ruche

Centre Socio-Culturel

Aciéries Sncf

Fonds de Lavaux

Route schedule

Les Vannes — Fonds de Lavaux

Monday	07:05
--------	-------

Tuesday	07:05
---------	-------

Wednesday	07:05
-----------	-------

Thursday	07:05
----------	-------

Friday	07:05
--------	-------

Saturday	—
----------	---

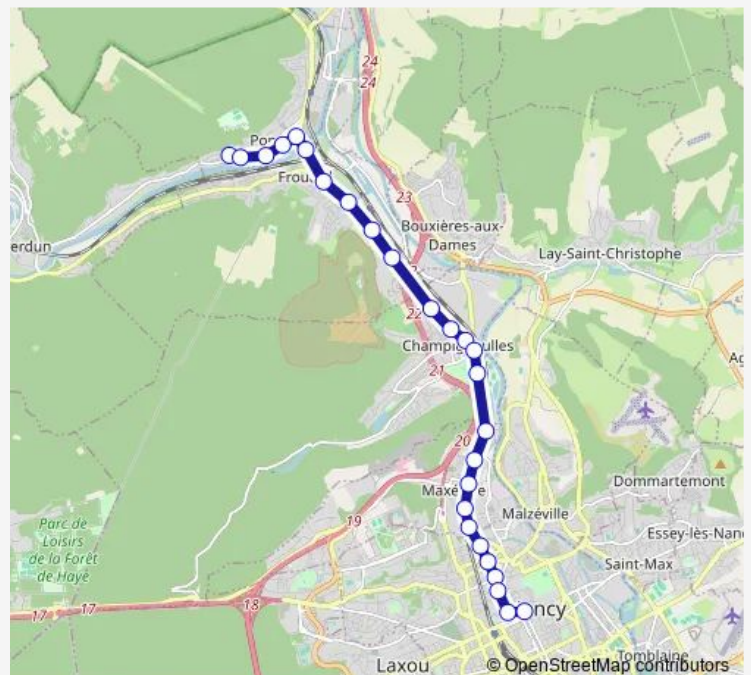
Sunday	—
--------	---

Route info

Direction: Les Vannes

Stops: 9

Trip Duration: 0 hour 7 min



Direction

Les Vannes — Nancy République

26 stops

[Open route schedule](#)

Les Vannes

Marronniers

Gambetta

Gasser

10 Septembre

Abattoirs

Point Central

Ecoles

La Source SnCF

Munch

La Rouchotte

La Rochelle

Port

Philippe Martin

Bugnet

La balance

Pont Fleuri

Courbet

Lavoir

Brasseries

Carsat

Saint-Fiacre

Désilles

Baron Louis

Place Carnot

Route schedule

Les Vannes — Nancy République

Monday 07:10-09:40

Tuesday 07:10

Wednesday 07:10-09:40

Thursday 07:10-09:40

Friday 07:10-09:40

Saturday 07:10

Sunday 09:40

Route info

Direction: Les Vannes

Stops: 26

Trip Duration: 0 hour 34 min

Direction

Nancy Gare — Les Vannes

29 stops

[Open route schedule](#)

Nancy Gare

Poirel

Place Carnot

Haut-Bourgeois

Désilles

Saint-Fiacre

Carsat

Brasseries

Lavoir

Courbet

Pont Fleuri

La Balance

Bugnet

Philippe Martin

Port

La Rochelle

La Rouchotte

Munch

La Source SnCF

Ecoles

Point Central

Abattoirs

La Ruche

Leclerc

Hôtel de Ville

Route schedule

Nancy Gare — Les Vannes

Monday 09:00

Tuesday —

Wednesday 09:00

Thursday 09:00

Friday 09:00

Saturday —

Sunday 09:00

Route info

Direction: Nancy Gare

Stops: 29

Trip Duration: 0 hour 35 min

Lasalle

Etoile

Jean Moulin

Les Vannes

84 Bus time schedules and route maps are available in an offline PDF at busmaps.com. Use the busmaps.com website to see live bus times, train schedule or subway schedule, and step-by-step directions for all public transit in Nancy

The schedule is provided in the local timezone. Times with "(+1)" indicate departures on the next day.

PDF file created on 2025-02-26

2024 BusMaps.com - All Rights Reserved