

# Bus CTA 977-1084 Lebanon Square Station - Saqr Quraish Station

[Go to website](#)

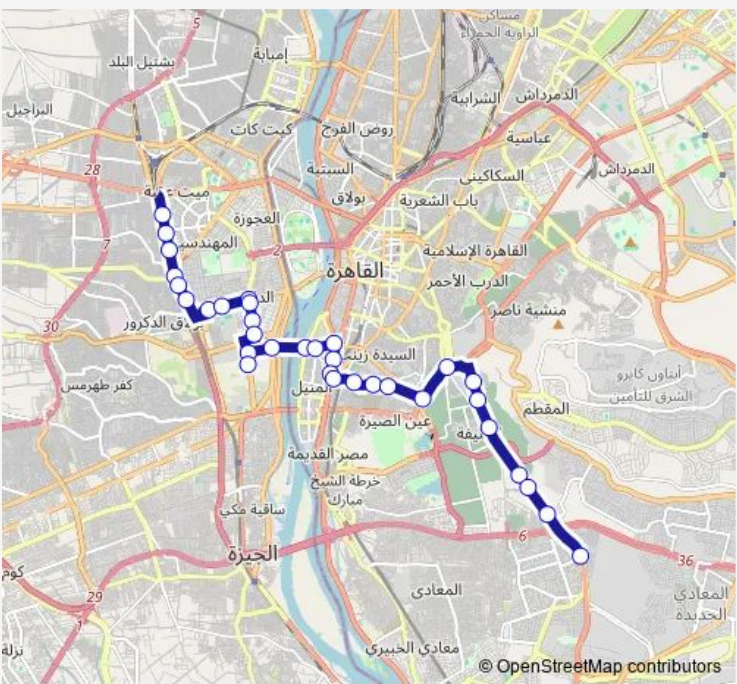
**Direction**  
 Sudan St. (Ard Al Lewa) — Saqr Quraish  
 33 stops  
[Open route schedule](#)

- Sudan St. (Ard Al Lewa)
- Aden St. & Sudan St.
- Ahli Kuwaiti Bank (Sudan St.)
- East Bulaq Dakrur (Nahya)
- Bulaq Dakrur
- Sednawy (Sudan St.)
- Mohie Al Deen Aboul Ezz St. & Tahrir St.
- National Research Center (Dokki)
- Dokki Square
- Dokki
- Simsima (Dokki)
- Czech Republic Embassy (Dokki)
- Cairo University Main Gate
- Faculty of Engineering (Cairo University)
- Cairo University Bridge
- Al Manial
- KFC (Al Manial)
- Kasr Al Ainy Hospital
- National Institute for Diabetes (Magra Al Oyoum)
- Fom Al Khalig
- National Institute for Tumor Studies (Magra Al Oyoum)

**Route schedule**  
 Sudan St. (Ard Al Lewa) — Saqr Quraish

Monday	10:00
Tuesday	10:00
Wednesday	10:00
Thursday	10:00
Friday	10:00
Saturday	10:00
Sunday	10:00

**Route info**  
 Direction: Sudan St. (Ard Al Lewa)  
 Stops: 33  
 Trip Duration: 1 hour 12 min



■ CTA 977-1084 — Lebanon Square Station - Saqr Quraish Station **BusMaps**

Al Farag Butchery (Magra Al Oyoun)

Madbah ( Magra Al Oyoun)

Al Moqattam Hospital

Magra Al Oyoun (Salah Salem)

Al Sayeda Aisha

Autostrad Entrance from Al Abageyya

Al Khelaa St.

Al Imam Al Shafei Cemeteries (Autostrad)

Al Magzar Al Aali (Autostrad)

Leather and Tanning Company (Autostrad)

Autostrad & Al Moneeb Axis

Saqr Quraish

## Direction

Saqr Quraish — Sudan St. (Ard Al Lewa)

35 stops

[Open route schedule](#)

Saqr Quraish

Criminal Investigation Department (Al Maadi Company St.)

Rotana Motors (Maadi)

Yathreb and Al Maadi Company St.

Al Behiry Stone (Basateen)

Basateen

Leather and Tanning Company (Autostrad)

Al Magzar Al Aali (Autostrad)

Al Imam Al Shafei Cemeteries (Autostrad)

Al Khelaa St.

Al Abageyya

Salah Al Din Citadel (Salah Salem)

Al Sayeda Aisha Station

Magra Al Oyoum (Salah Salem)

Al Moqattam Hospital

Madbah ( Magra Al Oyoum)

Al Farag Butchery (Magra Al Oyoum)

National Institute for Tumor Studies (Magra Al Oyoum)

Fom Al Khalig

Al Manial

Cairo University Bridge

Czesch Republic Embassy (Dokki)

Simsima (Dokki)

Dokki

Dokki Metro

## Route schedule

Saqr Quraish — Sudan St. (Ard Al Lewa)

Monday 10:00

Tuesday 10:00

Wednesday 10:00

Thursday 10:00

Friday 10:00

Saturday 10:00

Sunday 10:00

## Route info

Direction: Saqr Quraish

Stops: 35

Trip Duration: 1 hour 18 min

Dokki Square

National Research Center (Dokki)

Mohie Al Deen Aboul Ezz St. & Tahrir St.

Bohooth

Sednawy (Sudan St.)

Bulaq Dakrur

East Bulaq Dakrur (Nahya)

Ahli Kuwaiti Bank (Sudan St.)

Aden St. & Sudan St.

Sudan St. (Ard Al Lewa)

CTA 977-1084 Bus time schedules and route maps are available in an offline PDF at [busmaps.com](https://busmaps.com). Use the [busmaps.com](https://busmaps.com) website to see live bus times, train schedule or subway schedule, and step-by-step directions for all public transit in Giza

The schedule is provided in the local timezone. Times with "(+1)" indicate departures on the next day.

PDF file created on 2025-01-16

2024 BusMaps.com - All Rights Reserved