

## Bus A103 Chapinero Ciclovía

[Go to website](#)

### Direction

KR 92 - CL 169b — AC 63 - KR 8

72 stops

[Open route schedule](#)

KR 92 - CL 169b

CI170 - KR 93

AC 170 - KR 90

AC 170 - KR 78

AC 170 - AV. Boyacá

AV. Boyacá - AC 170

AV. Boyacá - CL 169B

AV. Boyacá - CL 167

AV. Boyacá - CL 163

CL 152b - KR 58

CL 152b - KR 56

KR 56 - CL 152b

CL 159 - KR 55

KR 55 - CL 161a

KR 55A - CL 163

KR 55A - CL 166

AC 170 - KR 54a

AC 170 - KR 49b

AC 170 - KR 21a

KR 21 - CL 169

KR 21 - CL 164

### Route schedule

KR 92 - CL 169b — AC 63 - KR 8

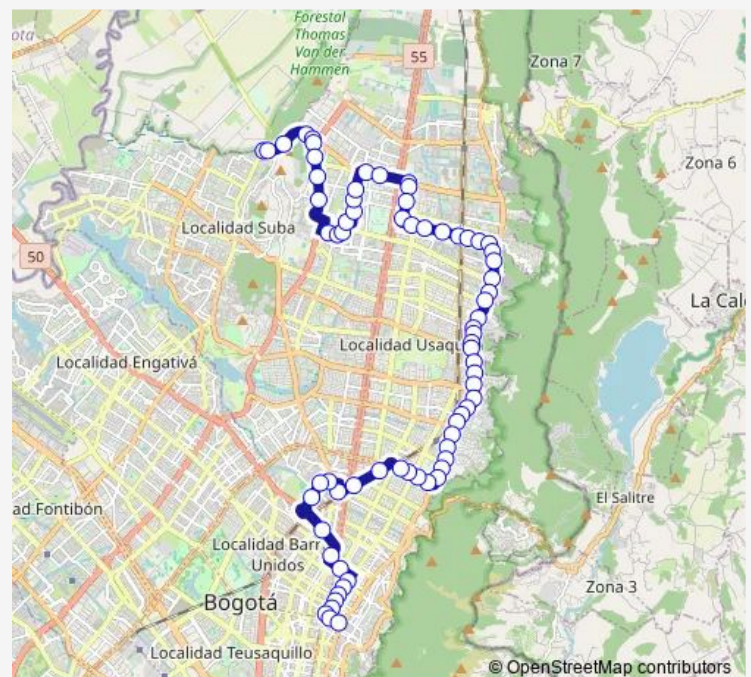
Monday	—
Tuesday	—
Wednesday	—
Thursday	—
Friday	—
Saturday	—
Sunday	06:25-12:56

### Route info

Direction: KR 92 - CL 169b

Stops: 72

Trip Duration: 1 hour 53 min



A103 — Chapinero Ciclovía

BusMaps

KR 21 - CL 161a

AC 161 - KR 19a

AC 161 - KR 16c

AC 161 - KR 13b

AC 161 - AK 9

AC 161 - KR 8c

AC 161 - KR 8

AC 161 - AK 7b

AK 7 - CL 159c

AK 7 - CL 156 Clínica El Bosque

AK 7 - AC 153

AK 7 - CL 150

AK 7 - AC 147

AK 7 - CL 144

AK 7 - CL 140

AK 7 - CL 140

AK 7 - CL 135

AK 7 - AC 134

AK 7 - CL 129

AK 7 - CL 127c Bis

AK 7 - CL 127a

AK 7 - CL 124

AK 7 - CL 123

AK 7 - CL 119a

AK 7 - CL 117

AK 7 - CL 113

AK 7 - CL 110

AK 7 - CL 108a

AK 7 - CL 106

AK 7 - CL 101

AC 100 - KR 8 Bis A

AC 100 - KR 8a

AC 100 - KR 11

AC 100 - KR 13

DG 92 - TV 17

DG 92 - TV 20

KR 47 - CL 91

CL 93 - KR 49a

AK 50 - CL 91a

AK 50 - CL 86b

AC 80 - KR 27

KR 20B - CL 75

CL 74 - KR 13

AK 11 - AC 72

AK 11 - CL 71

AK 11 - CL 69

AK 11 - CL 67

AK 11 - CL 65

AK 13 - CL 63a

AC 63 - KR 9a

AC 63 - KR 8

A103 Bus time schedules and route maps are available in an offline PDF at [busmaps.com](https://busmaps.com). Use the [busmaps.com](https://busmaps.com) website to see live bus times, train schedule or subway schedule, and step-by-step directions for all public transit in Bogota

The schedule is provided in the local timezone. Times with "(+1)" indicate departures on the next day.

PDF file created on 2025-01-16

2024 BusMaps.com - All Rights Reserved