

Bus X22 New Norfolk Express

[Go to website](#)

Direction
 Hobart City Interchange Stop A2 — Benjamin Tce Opp. Phillips Ave
 48 stops
[Open route schedule](#)

- Hobart City Interchange Stop A2
- Stop 1, Macquarie St past Campbell St
- Stop 21, No.356 Brooker Hwy
- Stop 24, No.444 Brooker Hwy
- Stop 25, opp. No.487 Brooker Hwy
- Stop 32, Elwick Road (Express Stop)
- Glenorchy Interchange Stop C
- Stop 26, No.436 Main Rd
- Stop 27, Opp. No.467 Main Rd
- Stop 28, No.490 Main Rd
- Stop 29, No.534 Main Rd
- Stop 30, No.564 Main Rd
- Stop 31, No.592 Main Rd
- Stop 32, No.626 Main Rd
- Stop 33, No.656 Main Rd
- Stop 34, Main Rd (Berriedale Bay)
- Stop 35, No.706 Main Rd
- Stop 36, No.732 Main Rd
- Stop 37, No.22 Main Rd
- Stop 38, No.60 Main Rd
- Stop 39, No.94 Main Rd

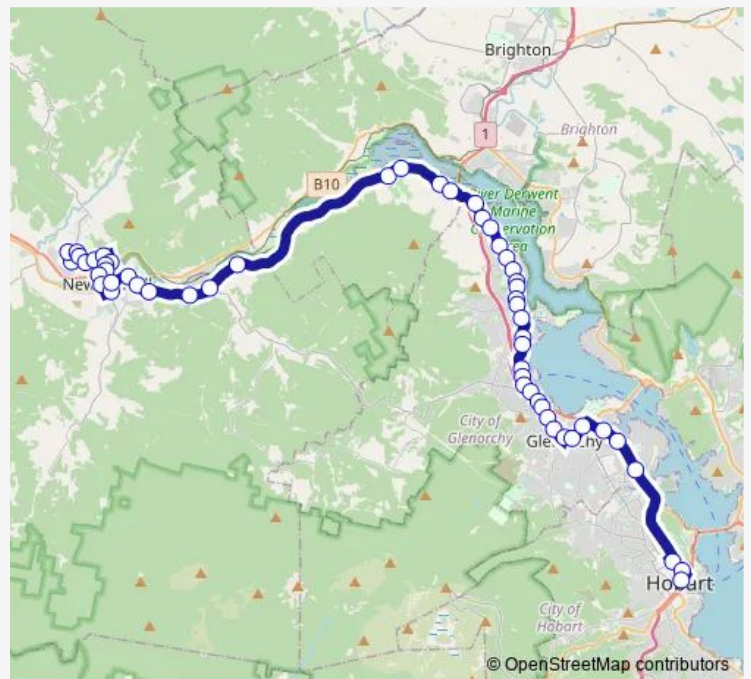
Route schedule

Hobart City Interchange Stop A2 — Benjamin Tce Opp. Phillips Ave

| | |
|-----------|-------------|
| Monday | 07:00-16:28 |
| Tuesday | 07:00-16:28 |
| Wednesday | 07:00-16:28 |
| Thursday | 07:00-16:28 |
| Friday | 07:00-16:28 |
| Saturday | — |
| Sunday | — |

Route info

Direction: Hobart City Interchange Stop A2
 Stops: 48
 Trip Duration: 1 hour 0 min



X22 — New Norfolk Express

Stop 40, No.112 Main Rd

Stop 41, Main Rd/Roseneath Park

Stop 42, No.174 Main Rd

Stop 43, No.210 Main Rd

Stop 44, No.272 Main Rd

Stop 45, opp.No.301 Main Rd

Stop 46, No.512 Main Rd

Stop 47, No.556 Main Rd

Stop 48, Main Rd (York Hotel)

Black Snake Rd cnr Brooker Hwy

Stop 49, Brooker Hwy near Granton Reserve

Granton Reserve, Corner Lyell Hwy & Brooker Hwy

Opp. No.73 Lyell Hwy

Lyell Hwy, Cnr Rowbottoms Rd

No.307 Lyell Hwy

No.1041 Lyell Hwy

Lyell Hwy, Cnr Molesworth Rd

No.1267 Lyell Hwy

Lyell Hwy, Cnr Glebe Rd

Opp. No.53 Hobart Rd (Lyell Hwy)

Hobart Rd (Lyell Hwy) Opposite Tynwald Park

Arthur Square, Pioneer Ave

New Norfolk Central, Pioneer Ave Car Park

George St Outside Willow Court

No.5 Blair St (Before Roundabout)

Back River Rd Outside Fire Station

Benjamin Tce Opp. Phillips Ave

Direction

Benjamin Tce Opp. Phillips Ave — (Set Down Only) Collins St opp. Elizabeth St Mall

54 stops

[Open route schedule](#)

Benjamin Tce Opp. Phillips Ave

No.89 Benjamin Tce

Britten St, Cnr Back River Rd

No.245 Back River Rd

No.16 Southview Crescent

No.32 North Crescent

No.74 North Crescent

No.13 Sixth Ave

No.55 Derwent Terrace

Third Ave Before Rocks Rd

Rocks Rd outside Toll House Park

No.2 Blair St (Past Roundabout)

No.42 George St

New Norfolk Central, Pioneer Ave Car Park

Hobart Rd (Lyell Hwy) Outside Tynwald Park

No.49 Hobart Rd (Lyell Hwy)

Lyell Hwy Outside Millbrook Rise

No.1278 Lyell Hwy

Lyell Hwy Opposite Molesworth Rd

No.1042 Lyell Hwy

Opp. No.309 Lyell Hwy

Opp. No.249 Lyell Hwy

No.99 Lyell Hwy

Lyell Hwy Opposite Tarrants Rd

Route schedule

Benjamin Tce Opp. Phillips Ave — (Set Down Only) Collins St opp. Elizabeth St Mall

Monday 05:42-16:29

Tuesday 05:42-16:29

Wednesday 05:42-16:29

Thursday 05:42-16:29

Friday 05:42-16:29

Saturday —

Sunday —

Route info

Direction: Benjamin Tce Opp. Phillips Ave

Stops: 54

Trip Duration: 1 hour 14 min

Stop 48, No.621 Main Rd (opp. York Hotel)

Stop 47, opp.No.552 Main Rd

Stop 46, opposite No.500 Main Rd

Stop 45, No.297 Main Rd

Stop 44, Main Rd opp Arncliffe Rd

Stop 43, Main Rd outside St Virgil's

Stop 42, No.147 Main Rd

Stop 41, No.127 Main Rd

Stop 40, opp.No.112 Main Rd

Stop 39, Main Rd opp. Abbotsfield Rd

Stop 37, Claremont Recreation Ground

No.731 Main Rd

Stop 36, No.711 Main Rd

Stop 34, Main Rd (Berriedale Bay)

Stop 33, Main Rd (Mona)

Stop 32, No.629 Main Rd

Stop 31, opp. No.590 Main Rd

Stop 30, Main Rd (near Lorraine Cr)

Stop 29, No.557 Main Rd

Stop 28, No.511 Main Rd

Stop 26, No.459 Main Rd

Glenorchy Interchange Stop J

Stop 25, No.355 Main Rd

No.46 Elwick Rd (express stop)

Stop 25, No.497 Brooker Hwy

Stop 24, No.435 Brooker Ave

Stop 21, No.359 Brooker Ave

Stop 4, No.169 Campbell St

Stop 1, No.55 Campbell St

(Set Down Only) Collins St opp. Elizabeth St Mall

Direction

Hobart City Interchange Stop A2 — Rocks Rd outside Toll House Park

57 stops

[Open route schedule](#)

Hobart City Interchange Stop A2

Stop 21, No.356 Brooker Hwy

Stop 24, No.444 Brooker Hwy

Stop 25, opp. No.487 Brooker Hwy

Stop 32, Elwick Road (Express Stop)

Glenorchy Interchange Stop C

Stop 26, No.436 Main Rd

Stop 27, Opp. No.467 Main Rd

Stop 28, No.490 Main Rd

Stop 29, No.534 Main Rd

Stop 30, No.564 Main Rd

Stop 31, No.592 Main Rd

Stop 32, No.626 Main Rd

Stop 33, No.656 Main Rd

Stop 34, Main Rd (Berriedale Bay)

Stop 35, No.706 Main Rd

Stop 36, No.732 Main Rd

Stop 37, No.22 Main Rd

Stop 38, No.60 Main Rd

Stop 39, No.94 Main Rd

Stop 40, No.112 Main Rd

Stop 41, Main Rd/Roseneath Park

Stop 42, No.174 Main Rd

Stop 43, No.210 Main Rd

Route schedule

Hobart City Interchange Stop A2 — Rocks Rd outside Toll House Park

Monday 07:45-17:50

Tuesday 07:45-17:50

Wednesday 07:45-17:50

Thursday 07:45-17:50

Friday 07:45-17:50

Saturday —

Sunday —

Route info

Direction: Hobart City Interchange Stop A2

Stops: 57

Trip Duration: 1 hour 8 min

Stop 44, No.272 Main Rd

Stop 45, opp.No.301 Main Rd

Stop 46, No.512 Main Rd

Stop 47, No.556 Main Rd

Stop 48, Main Rd (York Hotel)

Black Snake Rd cnr Brooker Hwy

Stop 49, Brooker Hwy near Granton Reserve

Granton Reserve, Corner Lyell Hwy & Brooker Hwy

Opp. No.73 Lyell Hwy

Lyell Hwy, Cnr Rowbottoms Rd

No.307 Lyell Hwy

No.1041 Lyell Hwy

Lyell Hwy, Cnr Molesworth Rd

No.1267 Lyell Hwy

Lyell Hwy, Cnr Glebe Rd

Opp. No.53 Hobart Rd (Lyell Hwy)

Hobart Rd (Lyell Hwy) Opposite Tynwald Park

Arthur Square, Pioneer Ave

New Norfolk Central, Pioneer Ave Car Park

George St Outside Willow Court

No.5 Blair St (Before Roundabout)

Back River Rd Outside Fire Station

Benjamin Tce Opp. Phillips Ave

No.89 Benjamin Tce

Britten St, Cnr Back River Rd

No.245 Back River Rd

No.16 Southview Crescent

No.32 North Crescent

No.74 North Crescent

No.13 Sixth Ave

No.55 Derwent Terrace

Third Ave Before Rocks Rd

Rocks Rd outside Toll House Park

X22 Bus time schedules and route maps are available in an offline PDF at busmaps.com. Use the busmaps.com website to see live bus times, train schedule or subway schedule, and step-by-step directions for all public transit in Hobart

The schedule is provided in the local timezone. Times with "(+1)" indicate departures on the next day.

PDF file created on 2025-01-16

2024 BusMaps.com - All Rights Reserved