

Bus 46E East SR 46/Downtown Sanford

[Go to website](#)

**Direction**  
 SR 415 AND Sterling Meadows Way — W Airport Blvd  
 AND W SR-46

36 stops

[Open route schedule](#)

SR 415 AND Sterling Meadows Way

SR 415 AND E SR 46

E SR 46 AND N Beardall Ave

E SR 46 AND Jitway

E SR 46 AND Water St

E SR 46 AND Granby St

E SR 46 AND Brisson Ave

Summerlin AVE AND Wynnewood Dr

Summerlin AVE AND Forest Dr

Summerlin AVE AND Langston Dr

Summerlin AVE AND Mckay Blvd

Summerlin AVE AND Summerlin Ave

Summerlin AVE AND Montezuma Ave

Summerlin AVE AND Celery Ave

Celery AVE AND S Mellonville Ave

Celery AVE AND Willow Ave

Celery AVE AND Orange Ave

Locust AVE AND E 11th St

Locust ST AND E 9TH St

Locust AVE AND E 7TH St

Locust AVE AND E 4TH St

Route schedule

SR 415 AND Sterling Meadows Way — W Airport Blvd  
 AND W SR-46

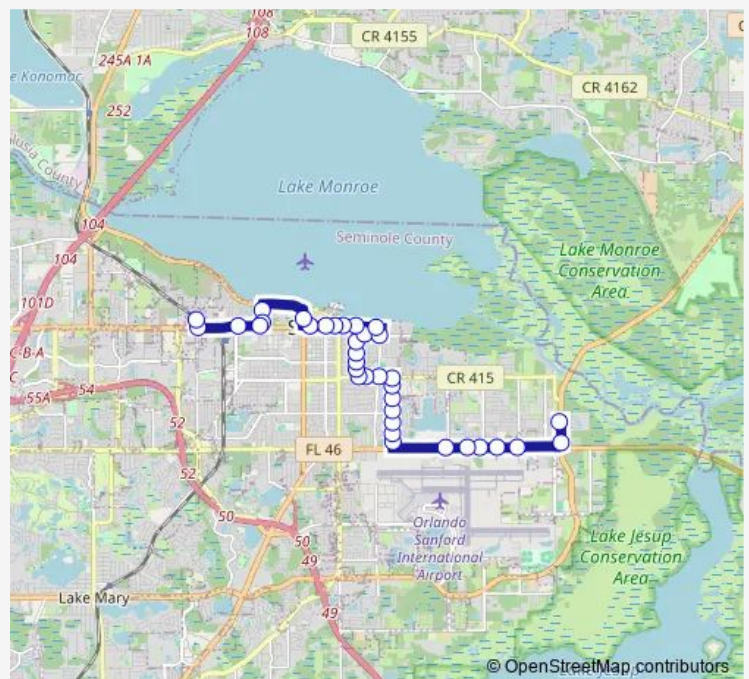
Monday	05:30-19:00
Tuesday	05:30-19:00
Wednesday	05:30-19:00
Thursday	05:30-19:00
Friday	05:30-19:00
Saturday	06:15-18:15
Sunday	—

Route info

Direction: SR 415 AND Sterling Meadows Way

Stops: 36

Trip Duration: 0 hour 26 min



46E — East SR 46/Downtown Sanford

E 2ND ST AND SAN Juan Ave

E 2ND ST AND S Mellonville Ave

E 1ST ST AND SAN Carlos Ave

E 1ST ST AND Chapman Ave

E 1ST ST AND Cypress Ave

E 1ST ST AND N Palmetto Ave

E 1ST ST AND N Park Ave

W 1ST ST AND N ELM Ave

French AVE AND Fulton St

N Mangoustine AVE AND NW US HWY 17-92

Mangoustine AVE AND Lexington Green Ln

W 1ST ST AND Mangoustine Ave

W SR 46 AND Willner Cir

W SR 46 AND W Airport Blvd

W Airport Blvd AND W SR-46

## Direction

W Airport Blvd AND W SR-46 — SR 415 AND Sterling Meadows Way

24 stops

[Open route schedule](#)

W Airport Blvd AND W SR-46

2700 SR 46 AND Persimmon Avenue

W SR 46 AND Pomegranite Ave

N Mangoustine AVE AND Fulton St

N Mangoustine AVE AND NW US HWY 17-92

NW US HWY 17-92 AND Fulton St

W 1ST ST AND Laurel Ave

W 1ST ST AND Park Ave

E 1ST ST AND Palmetto Ave

E 1ST ST AND Cypress Ave

E 1ST ST AND Locust Ave

E 1ST ST AND SAN Carlos Ave

S Mellonville AVE AND E 2ND St

E 2ND ST AND SAN Juan Ave

Locust AVE AND E 5TH St

Locust AVE AND E 7TH St

Locust ST AND E 9TH St

Locust AVE AND E 11th St

Locust AVE AND Celery Ave

Celery AVE AND Willow Ave

Celery AVE AND S Mellonville Ave

Celery AV AND Summerlin Ave

Celery AVE AND Hopedale PI

SR 415 AND Sterling Meadows Way

## Route schedule

W Airport Blvd AND W SR-46 — SR 415 AND Sterling Meadows Way

Monday 06:00-18:30

Tuesday 06:00-18:30

Wednesday 06:00-18:30

Thursday 06:00-18:30

Friday 06:00-18:30

Saturday 06:45-18:45

Sunday —

## Route info

Direction: W Airport Blvd AND W SR-46

Stops: 24

Trip Duration: 0 hour 26 min

46E Bus time schedules and route maps are available in an offline PDF at [busmaps.com](https://busmaps.com). Use the [busmaps.com](https://busmaps.com) website to see live bus times, train schedule or subway schedule, and step-by-step directions for all public transit in Sanford

The schedule is provided in the local timezone. Times with "(+1)" indicate departures on the next day.

PDF file created on 2025-01-16

2024 BusMaps.com - All Rights Reserved