

Bus Sy 52 Court St

[Go to website](#)

Direction
 B9 — Vinette Towers
 37 stops
[Open route schedule](#)

B9

S Salina St & Jefferson St

S Salina St & Water St (mid-block)

N Salina St & E Willow St

E Willow St & N Warren St

E Willow St & N State St

E Willow St & Prospect Ave

E Willow St & N Townsend St

N Townsend St & Hickory St

N Townsend St & Union Ave

N Townsend St & E Laurel St

N Townsend St & Butternut St

Butternut St & N Mcbride St

Butternut St & Lodi St

Butternut St & Josephine St

Butternut St & Alvord St

Butternut St & Schneider St

Park St & Oberst St

Park St & John St

Park St & Mary St

Park St & Pond St

Route schedule

B9 — Vinette Towers

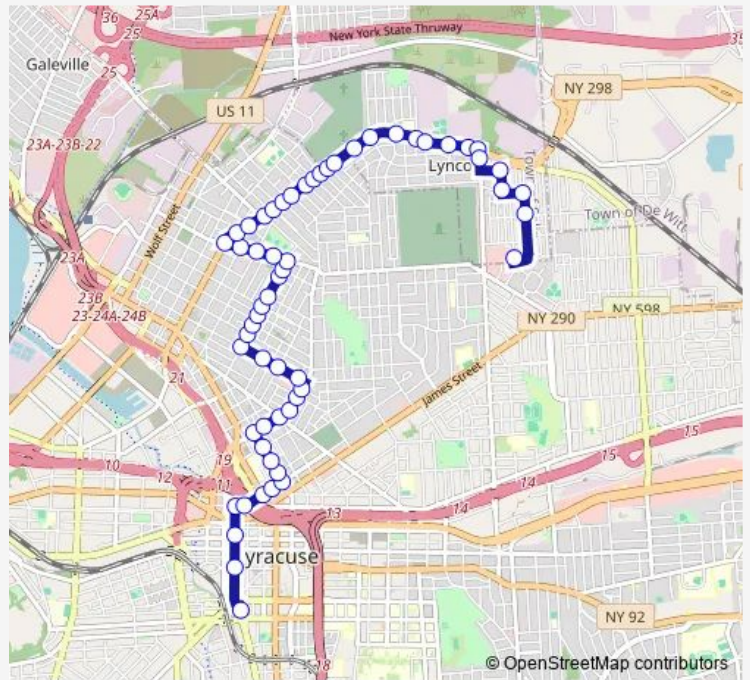
Monday	04:55-17:20
Tuesday	04:55-17:20
Wednesday	04:55-17:20
Thursday	04:55-17:20
Friday	04:55-17:20
Saturday	—
Sunday	—

Route info

Direction: B9

Stops: 37

Trip Duration: 0 hour 20 min



Sy 52 — Court St

Park St & Kirkpatrick St

Park St & Danforth St

Park St & Court St

Court St & Carbon St

Court St & Spring St

Court St & 1st North Street

Court St & 2nd North St

Court St & Court Ter

Court St & Grant Blvd

Grant Blvd & Court St

Grant Blvd & Danforth St

Grant Blvd & Kirkpatrick St

Grant Blvd & Culbert St

Grant Blvd & Pond St

Pond St & Warham St

Vinette Towers

Direction

Vinette Towers — B12

25 stops

[Open route schedule](#)

Vinette Towers

Pond St & Griffith St

Pond St & 1st North St

Pond St & Spring St

Pond St & Carbon St

Pond St & Park St

Park St & Mary St

Park St & John St

Park St & Oberst St

Park St & Butternut St

Butternut St & S Alvord St

Butternut St & Josephine St

Butternut St & Lodi St

Butternut St & N McBride St

N Townsend St & Butternut St

N Townsend St & E Laurel St

N Townsend St & Union Ave

Union Ave & Prospect Ave

Prospect Ave & E Willow St

E Willow St & N State St

E Willow St & N Salina St

N Salina St & W Genesee St

S Salina St & Washington St

S Salina St & W Jefferson St

B12

Route schedule

Vinette Towers — B12

Monday 07:40-17:40

Tuesday 07:40-17:40

Wednesday 07:40-17:40

Thursday 07:40-17:40

Friday 07:40-17:40

Saturday —

Sunday —

Route info

Direction: Vinette Towers

Stops: 25

Trip Duration: 0 hour 15 min

Direction

B9 — Vincent Dr & Townline Rd

64 stops

[Open route schedule](#)

B9

S Salina St & Jefferson St

S Salina St & Water St (mid-block)

N Salina St & E Willow St

N Salina St & Herald Pl

N Salina St & E Laurel St

N Salina St & Butternut St

N Salina St & Ash St

N Salina St & E Division St

N Salina St & Catawba St

N Salina St & Isabella St

N Salina St & Lodi St

N Salina St & Danforth St

N Salina St & Court St

Court St & Park St

Court St & Carbon St

Court St & Spring St

Court St & 1st North Street

Court St & 2nd North St

Court St & Court Ter

Court St & Grant Blvd

Court St & Burdick Ave

Court St & Michaels Ave

Court St & Hood Ave

Court St & Ross Park

Route schedule

B9 — Vincent Dr & Townline Rd

Monday 05:45

Tuesday 05:45

Wednesday 05:45

Thursday 05:45

Friday 05:45

Saturday —

Sunday —

Route info

Direction: B9

Stops: 64

Trip Duration: 0 hour 45 min

Court St & Dale St

Court St & Kuhl Ave

Court St & Malverne Dr

Court St & Wadsworth St

Court St & Harding St

Court St & Maplehurst Ave

Court St & Darlington Rd

Court St & Darlington Rd E

Court St & Roxford Rd S

Court St & S Berwick Rd

Court St & Knoll Pl

Court St & Lyncourt Dr

Court St & Brookland Dr

Court St & Lyncourt Plaza

Court St & Teall Ave

Court St & Schaffer Ave

Court St & Swansea Ave

State Route 298 & Court St Rd

Court Street Rd & Wilcox Paper Co

Court St Rd & Baker St

Court St Rd & Wavel St

Court St Rd & Ventre Packing Co

Court Street Rd & N Midler Ave

Deere Rd & John Deere Parking Lot

Deere Rd & GE Building 5

Deere Rd & Tarbell Rd

Tarbell Rd across NYS Thruway

Tarbell Rd & GE plant guard shack

Thompson Rd & Eastern Av

Thompson Rd & Boss Rd

Boss Rd & Joy Rd

Old Collamer Rd & Collamer Cir

E Molloy Rd & Ingersoll Rand Co

E Molloy Rd & Corporate Dr

E Molloy Rd & Thompson Rd

E Molloy Rd & Air Natl Guard Base

E Molloy Rd & Moore Rd

Pickard Dr & Pickard Dr E

Vincent Dr & Townline Rd

Direction

Vinette Towers — A1

25 stops

[Open route schedule](#)

Vinette Towers

Pond St & Griffith St

Pond St & 1st North St

Pond St & Spring St

Pond St & Carbon St

Pond St & Park St

Park St & Mary St

Park St & John St

Park St & Oberst St

Park St & Butternut St

Butternut St & S Alvord St

Butternut St & Josephine St

Butternut St & Lodi St

Butternut St & N McBride St

N Townsend St & Butternut St

N Townsend St & E Laurel St

N Townsend St & Union Ave

Union Ave & Prospect Ave

Prospect Ave & E Willow St

E Willow St & N State St

E Willow St & N Salina St

N Salina St & W Genesee St

S Salina St & Washington St

S Salina St & W Jefferson St

A1

Route schedule

Vinette Towers — A1

Monday 15:40

Tuesday 15:40

Wednesday 15:40

Thursday 15:40

Friday 15:40

Saturday —

Sunday —

Route info

Direction: Vinette Towers

Stops: 25

Trip Duration: 0 hour 15 min

Direction

Shop City — A6

55 stops

[Open route schedule](#)

Shop City

Swansea Ave & Craigie St

Swansea Ave & Swan Ave

Swan Ave & Schaffer Ave

Schaffer Ave & Arterial Rd

Arterial Rd & Teall Ave

Teall Ave & Roxford Rd S

Court St & Lyncourt Plaza

Court St & Brookland Dr

Court St & Knoll Pl

Court St & N Berwick Rd

Court St & Wayland Rd

Court St & Roxford Rd N

Court St & Darlington Rd E

Court St & Darlington Rd

Court St & Maplehurst Ave

Court St & Wadsworth St

Court St & Malverne Dr

Court St & Englert Ave

Court St & Martin St

Court St & Kenwood Ave

Court St & 7th North St

Court St & Willumae Dr

Court St & Burdick Ave

Grant Blvd & Court St

Route schedule

Shop City — A6

Monday 07:00-17:40

Tuesday 07:00-17:40

Wednesday 07:00-17:40

Thursday 07:00-17:40

Friday 07:00-17:40

Saturday 08:20-17:40

Sunday 17:40

Route info

Direction: Shop City

Stops: 55

Trip Duration: 0 hour 35 min

Grant Blvd & Danforth St

Grant Blvd & Kirkpatrick St

Grant Blvd & Culbert St

Grant Blvd & Pond St

Pond St & Warham St

Vinette Towers

Pond St & Griffith St

Pond St & 1st North St

Pond St & Spring St

Pond St & Carbon St

Pond St & Park St

Park St & Mary St

Park St & John St

Park St & Oberst St

Park St & Butternut St

Butternut St & S Alvord St

Butternut St & Josephine St

Butternut St & Lodi St

Butternut St & N Mcbride St

N Townsend St & Butternut St

N Townsend St & E Laurel St

N Townsend St & Union Ave

Union Ave & Prospect Ave

Prospect Ave & E Willow St

E Willow St & N State St

E Willow St & N Salina St

N Salina St & W Genesee St

S Salina St & Washington St

S Salina St & W Jefferson St

A6

Direction

Shop City — A5

55 stops

[Open route schedule](#)

Shop City

Swansea Ave & Craigie St

Swansea Ave & Swan Ave

Swan Ave & Schaffer Ave

Schaffer Ave & Arterial Rd

Arterial Rd & Teall Ave

Teall Ave & Roxford Rd S

Court St & Lyncourt Plaza

Court St & Brookland Dr

Court St & Knoll Pl

Court St & N Berwick Rd

Court St & Wayland Rd

Court St & Roxford Rd N

Court St & Darlington Rd E

Court St & Darlington Rd

Court St & Maplehurst Ave

Court St & Wadsworth St

Court St & Malverne Dr

Court St & Englert Ave

Court St & Martin St

Court St & Kenwood Ave

Court St & 7th North St

Court St & Willumae Dr

Court St & Burdick Ave

Grant Blvd & Court St

Route schedule

Shop City — A5

Monday 23:03

Tuesday 23:03

Wednesday 23:03

Thursday 23:03

Friday 23:03

Saturday 23:03

Sunday 23:03

Route info

Direction: Shop City

Stops: 55

Trip Duration: 0 hour 32 min

Grant Blvd & Danforth St

Grant Blvd & Kirkpatrick St

Grant Blvd & Culbert St

Grant Blvd & Pond St

Pond St & Warham St

Vinette Towers

Pond St & Griffith St

Pond St & 1st North St

Pond St & Spring St

Pond St & Carbon St

Pond St & Park St

Park St & Mary St

Park St & John St

Park St & Oberst St

Park St & Butternut St

Butternut St & S Alvord St

Butternut St & Josephine St

Butternut St & Lodi St

Butternut St & N Mcbride St

N Townsend St & Butternut St

N Townsend St & E Laurel St

N Townsend St & Union Ave

Union Ave & Prospect Ave

Prospect Ave & E Willow St

E Willow St & N State St

E Willow St & N Salina St

N Salina St & W Genesee St

S Salina St & Washington St

S Salina St & W Jefferson St

A5

Direction

Shop City — A2

55 stops

[Open route schedule](#)

Shop City

Swansea Ave & Craigie St

Swansea Ave & Swan Ave

Swan Ave & Schaffer Ave

Schaffer Ave & Arterial Rd

Arterial Rd & Teall Ave

Teall Ave & Roxford Rd S

Court St & Lyncourt Plaza

Court St & Brookland Dr

Court St & Knoll Pl

Court St & N Berwick Rd

Court St & Wayland Rd

Court St & Roxford Rd N

Court St & Darlington Rd E

Court St & Darlington Rd

Court St & Maplehurst Ave

Court St & Wadsworth St

Court St & Malverne Dr

Court St & Englert Ave

Court St & Martin St

Court St & Kenwood Ave

Court St & 7th North St

Court St & Willumae Dr

Court St & Burdick Ave

Grant Blvd & Court St

Route schedule

Shop City — A2

Monday 06:20

Tuesday 06:20

Wednesday 06:20

Thursday 06:20

Friday 06:20

Saturday —

Sunday —

Route info

Direction: Shop City

Stops: 55

Trip Duration: 0 hour 35 min

Grant Blvd & Danforth St

Grant Blvd & Kirkpatrick St

Grant Blvd & Culbert St

Grant Blvd & Pond St

Pond St & Warham St

Vinette Towers

Pond St & Griffith St

Pond St & 1st North St

Pond St & Spring St

Pond St & Carbon St

Pond St & Park St

Park St & Mary St

Park St & John St

Park St & Oberst St

Park St & Butternut St

Butternut St & S Alvord St

Butternut St & Josephine St

Butternut St & Lodi St

Butternut St & N McBride St

N Townsend St & Butternut St

N Townsend St & E Laurel St

N Townsend St & Union Ave

Union Ave & Prospect Ave

Prospect Ave & E Willow St

E Willow St & N State St

E Willow St & N Salina St

N Salina St & W Genesee St

S Salina St & Washington St

S Salina St & W Jefferson St

A2

Direction

Shop City — B9

55 stops

[Open route schedule](#)

Shop City

Swansea Ave & Craigie St

Swansea Ave & Swan Ave

Swan Ave & Schaffer Ave

Schaffer Ave & Arterial Rd

Arterial Rd & Teall Ave

Teall Ave & Roxford Rd S

Court St & Lyncourt Plaza

Court St & Brookland Dr

Court St & Knoll Pl

Court St & N Berwick Rd

Court St & Wayland Rd

Court St & Roxford Rd N

Court St & Darlington Rd E

Court St & Darlington Rd

Court St & Maplehurst Ave

Court St & Wadsworth St

Court St & Malverne Dr

Court St & Englert Ave

Court St & Martin St

Court St & Kenwood Ave

Court St & 7th North St

Court St & Willumae Dr

Court St & Burdick Ave

Grant Blvd & Court St

Route schedule

Shop City — B9

Monday 05:20-21:43

Tuesday 05:20-21:43

Wednesday 05:20-21:43

Thursday 05:20-21:43

Friday 05:20-21:43

Saturday 19:03-21:43

Sunday 08:20-21:43

Route info

Direction: Shop City

Stops: 55

Trip Duration: 0 hour 32 min

Grant Blvd & Danforth St

Grant Blvd & Kirkpatrick St

Grant Blvd & Culbert St

Grant Blvd & Pond St

Pond St & Warham St

Vinette Towers

Pond St & Griffith St

Pond St & 1st North St

Pond St & Spring St

Pond St & Carbon St

Pond St & Park St

Park St & Mary St

Park St & John St

Park St & Oberst St

Park St & Butternut St

Butternut St & S Alvord St

Butternut St & Josephine St

Butternut St & Lodi St

Butternut St & N McBride St

N Townsend St & Butternut St

N Townsend St & E Laurel St

N Townsend St & Union Ave

Union Ave & Prospect Ave

Prospect Ave & E Willow St

E Willow St & N State St

E Willow St & N Salina St

N Salina St & W Genesee St

S Salina St & Washington St

S Salina St & W Jefferson St

B9

Direction

Vincent Dr & Townline Rd — A6

50 stops

[Open route schedule](#)

Vincent Dr & Townline Rd

E Molloy Rd & Oliva Dr

E Molloy Rd & Pickard Dr

E Molloy Rd & Moore Rd

6012 E Molloy Rd

E Molloy Rd & Air Natl Guard Base

E Molloy Rd & Thompson Rd

E Molloy Rd & Newbrook Av

E Molloy Rd & Ellicott Dr

E Molloy Rd & Joy Rd

Collamer Cir & Old Collamer Rd

Joy Rd & Boss Rd

Boss Rd & Technical Erectors Inc

Thompson Rd & Brooklawn Pkwy

Tarbell Rd & NYS Thruway Authority Bldng

Tarbell Rd & GE Guard Shack

Tarbell Rd across NYS Thruway

Tarbell Rd & Deere Rd

Deere Rd & Champion Bldg

Court St Rd & N Midler Av

Court St Rd & LB Smith Inc

Court Street Rd & Baker St

Court St Rd & Barnes & Cone Co

Court St & Lyncourt Plaza

Court St & Brookland Dr

Route schedule

Vincent Dr & Townline Rd — A6

Monday 15:35

Tuesday 15:35

Wednesday 15:35

Thursday 15:35

Friday 15:35

Saturday —

Sunday —

Route info

Direction: Vincent Dr & Townline Rd

Stops: 50

Trip Duration: 0 hour 40 min

Court St & Knoll Pl

Court St & N Berwick Rd

Court St & Wayland Rd

Court St & Roxford Rd N

Court St & Darlington Rd E

Court St & Darlington Rd

Court St & Maplehurst Ave

Court St & Wadsworth St

Court St & Malverne Dr

Court St & Englert Ave

Court St & Martin St

Court St & Kenwood Ave

Court St & 7th North St

Court St & Willumae Dr

Court St & Burdick Ave

Court St & Spring St

Court St & Carbon St

Court St & Park St

Court St & N Salina St

N Salina St & Herald Pl

N Salina St & E Willow St

N Salina St & W Genesee St

S Salina St & Washington St

S Salina St & W Jefferson St

A6

Direction

Shop City — A7

55 stops

[Open route schedule](#)

Shop City

Swansea Ave & Craigie St

Swansea Ave & Swan Ave

Swan Ave & Schaffer Ave

Schaffer Ave & Arterial Rd

Arterial Rd & Teall Ave

Teall Ave & Roxford Rd S

Court St & Lyncourt Plaza

Court St & Brookland Dr

Court St & Knoll Pl

Court St & N Berwick Rd

Court St & Wayland Rd

Court St & Roxford Rd N

Court St & Darlington Rd E

Court St & Darlington Rd

Court St & Maplehurst Ave

Court St & Wadsworth St

Court St & Malverne Dr

Court St & Englert Ave

Court St & Martin St

Court St & Kenwood Ave

Court St & 7th North St

Court St & Willumae Dr

Court St & Burdick Ave

Grant Blvd & Court St

Route schedule

Shop City — A7

Monday 05:40

Tuesday 05:40

Wednesday 05:40

Thursday 05:40

Friday 05:40

Saturday 05:40

Sunday —

Route info

Direction: Shop City

Stops: 55

Trip Duration: 0 hour 35 min

Grant Blvd & Danforth St

Grant Blvd & Kirkpatrick St

Grant Blvd & Culbert St

Grant Blvd & Pond St

Pond St & Warham St

Vinette Towers

Pond St & Griffith St

Pond St & 1st North St

Pond St & Spring St

Pond St & Carbon St

Pond St & Park St

Park St & Mary St

Park St & John St

Park St & Oberst St

Park St & Butternut St

Butternut St & S Alvord St

Butternut St & Josephine St

Butternut St & Lodi St

Butternut St & N Mcbride St

N Townsend St & Butternut St

N Townsend St & E Laurel St

N Townsend St & Union Ave

Union Ave & Prospect Ave

Prospect Ave & E Willow St

E Willow St & N State St

E Willow St & N Salina St

N Salina St & W Genesee St

S Salina St & Washington St

S Salina St & W Jefferson St

A7

Direction

B9 — Shop City

58 stops

[Open route schedule](#)

B9

S Salina St & Jefferson St

S Salina St & Water St (mid-block)

N Salina St & E Willow St

E Willow St & N Warren St

E Willow St & N State St

E Willow St & Prospect Ave

E Willow St & N Townsend St

N Townsend St & Hickory St

N Townsend St & Union Ave

N Townsend St & E Laurel St

N Townsend St & Butternut St

Butternut St & N Mcbride St

Butternut St & Lodi St

Butternut St & Josephine St

Butternut St & Alvord St

Butternut St & Schneider St

Park St & Oberst St

Park St & John St

Park St & Mary St

Park St & Pond St

Pond St & Carbon St

Pond St & Spring St

Pond St & Gilbert Ave

Pond St & 1st North St

Route schedule

B9 — Shop City

Monday 05:00-23:40

Tuesday 05:00-23:40

Wednesday 05:00-23:40

Thursday 05:00-23:40

Friday 05:00-23:40

Saturday 05:00-23:40

Sunday 07:40-23:40

Route info

Direction: B9

Stops: 58

Trip Duration: 0 hour 35 min

Pond St & Griffith St

Pond St & Becker St

Pond St & Warham St

Pond St & Grant Blvd

Grant Blvd & Culbert St

Grant Blvd & Kirkpatrick St

Grant Blvd & Danforth St

Grant Blvd & Court St

Court St & Burdick Ave

Court St & Michaels Ave

Court St & Hood Ave

Court St & Ross Park

Court St & Dale St

Court St & Kuhl Ave

Court St & Malverne Dr

Court St & Wadsworth St

Court St & Harding St

Court St & Maplehurst Ave

Court St & Darlington Rd

Court St & Darlington Rd E

Court St & Roxford Rd S

Court St & S Berwick Rd

Court St & Knoll Pl

Court St & Lyncourt Dr

Court St & Brookland Dr

Court St & Lyncourt Plaza

Court St & Teall Ave

Teall Ave & Roxford Rd S

Arterial Rd & Schaffer Av

Schaffer Ave & Lorenzo Dr

Swan Ave & Swansea Ave

Swansea Ave & Craigie St

Shop City

Direction

B9 — Shop City

72 stops

[Open route schedule](#)

B9

S Salina St & Jefferson St

S Salina St & Water St (mid-block)

N Salina St & E Willow St

E Willow St & N Warren St

E Willow St & N State St

E Willow St & Prospect Ave

E Willow St & N Townsend St

N Townsend St & Hickory St

N Townsend St & Union Ave

N Townsend St & E Laurel St

N Townsend St & Butternut St

Butternut St & N Mcbride St

Butternut St & Lodi St

Butternut St & Josephine St

Butternut St & Alvord St

Butternut St & Schneider St

Park St & Oberst St

Park St & John St

Park St & Mary St

Park St & Pond St

Pond St & Carbon St

Pond St & Spring St

Pond St & Gilbert Ave

Pond St & 1st North St

Route schedule

B9 — Shop City

Monday 07:00

Tuesday 07:00

Wednesday 07:00

Thursday 07:00

Friday 07:00

Saturday —

Sunday —

Route info

Direction: B9

Stops: 72

Trip Duration: 0 hour 40 min

Pond St & Griffith St

Pond St & Becker St

Pond St & Warham St

Pond St & Grant Blvd

Grant Blvd & Culbert St

Grant Blvd & Kirkpatrick St

Grant Blvd & Danforth St

Grant Blvd & Court St

Court St & Burdick Ave

Court St & Michaels Ave

Court St & Hood Ave

Court St & Ross Park

Court St & Dale St

Court St & Kuhl Ave

Court St & Malverne Dr

Court St & Wadsworth St

Court St & Harding St

Court St & Maplehurst Ave

Court St & Darlington Rd

Court St & Darlington Rd E

Court St & Roxford Rd S

Court St & S Berwick Rd

Court St & Knoll Pl

Court St & Lyncourt Dr

Court St & Brookland Dr

Court St & Lyncourt Plaza

Court St & Teall Ave

Teall Ave & Roxford Rd S

Teall Ave & Fordham Rd

Teall Ave & Gray Ave

Teall Ave & Rugby Rd

Teall Ave & James St

Teall Ave & Eldorado St

Teall Ave & Mariposa St

Teall Ave & Boyden St

Henninger High School Upper Lot

Teall Ave & Kinne St

Teall Ave & Boyden St

Teall Ave & Mariposa St

Teall Ave & Mooney Ave

Teall Ave & Melrose Ave

Teall Ave & James St

Teall Ave & Rugby Rd

Teall Ave & Peck Ave

Teall Ave & Paul Ave

Teall Ave & Mildred Ave

Shop City

Sy 52 Bus time schedules and route maps are available in an offline PDF at busmaps.com. Use the busmaps.com website to see live bus times, train schedule or subway schedule, and step-by-step directions for all public transit in Syracuse

The schedule is provided in the local timezone. Times with "(+1)" indicate departures on the next day.

PDF file created on 2025-01-16

2024 BusMaps.com - All Rights Reserved