

Direction
 Transit Center — Transit Center

53 stops

[Open route schedule](#)

- Transit Center
- Grand / Texas
- Grand / Farragut
- Garfield / Grand (East Jr. High)
- Grand / Continental
- Copperidge
- Crest Nursing Home
- Continental Gardens
- Continental / Bayard
- Continental / Floral
- Continental / Quincy
- Meadowlands / Atherton
- Elizabeth Warren / Continental (Big Sky Living)
- Elizabeth Warren / Whiteway
- The Springs
- Harrison / Elizabeth Warren
- Walmart - South Door
- Harrison / Elizabeth Warren
- Harrison / Holmes
- Butte Plaza Mall N. / Herbergers
- Harrison / Roosevelt (Mall)

Route schedule
 Transit Center — Transit Center

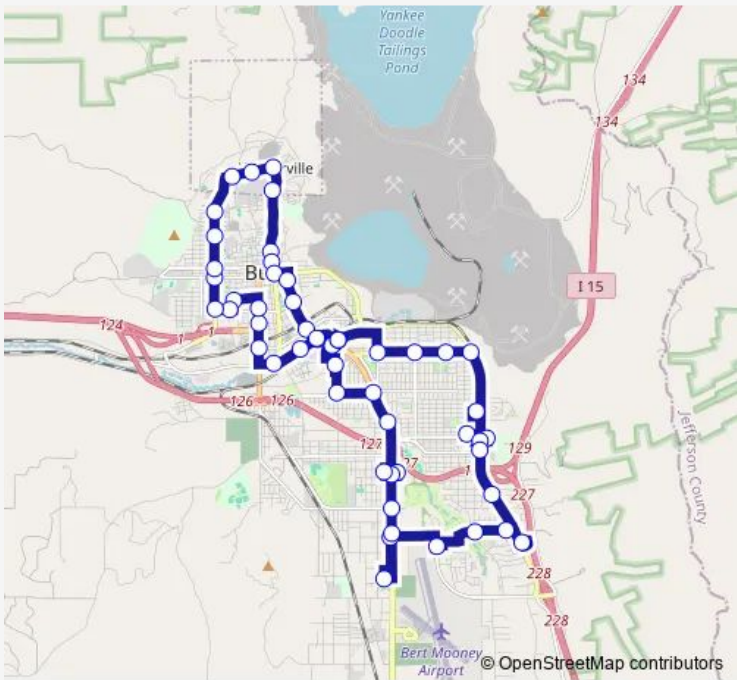
Monday	—
Tuesday	—
Wednesday	—
Thursday	—
Friday	—
Saturday	08:45-14:45
Sunday	—

Route info

Direction: Transit Center

Stops: 53

Trip Duration: 1 hour 28 min



Highland View Manor

Lisac's Tri Stop

Harrison / Cobban

Oregon / Cobban

Columbus Plaza

CVS / Stokes

Transit Center

Front / Arizona

Front / California

Front / Main (Health Department)

Montana / Second

Montana / Aluminum

Montana / Platinum

St. James Hospital

Platinum / Clark

Platinum / Excelsior

Excelsior / Park

Excelsior / Granite

Excelsior / Waukesha

Excelsior / Missoula

Daly / 5th

Daly / 2nd

Daly / Main Bypass

Main / Bennett

Main / Copper

Main / Granite

Park / Main

Arizona / Mercury

Utah / Platinum (Butte High)

Utah / Second

Front / Arizona

Transit Center

Saturday Bus time schedules and route maps are available in an offline PDF at busmaps.com. Use the busmaps.com website to see live bus times, train schedule or subway schedule, and step-by-step directions for all public transit in Butte

The schedule is provided in the local timezone. Times with "(+1)" indicate departures on the next day.

PDF file created on 2025-01-16

2024 BusMaps.com - All Rights Reserved