



## Bus Route 10

[Go to website](#)

### Direction

Sonrise Apartments — SR 512 & 128th Ave (Wb)

49 stops

[Open route schedule](#)

Sonrise Apartments

Lincoln St & Willow St

Grant Ave & State St

Booker St & Grant Ave

Booker St & Willow St

Fellsmere Farm Rd & Esperanza Cir

Grace Ave & Meadows Ct

N Willow St & N.Y. Ave

N.Y. Ave & N Lime St

N.Y. Ave & N Elm St

N.Y. Ave & N Hickory St

N.Y. Ave & N Broadway St

Broadway St & SR 512

Cypress St & SR 512

Oleander St. & SR 512

Oleander St. & Virginia Ave

Oleander St & Mass Ave

Broadway St & Mass Ave

Elm St & Mass Ave

Elm St & Tennessee Ave

Elm St & SR 512

### Route schedule

Sonrise Apartments — SR 512 & 128th Ave (Wb)

Monday 06:00-19:00

Tuesday 06:00-19:00

Wednesday 06:00-19:00

Thursday 06:00-19:00

Friday 06:00-19:00

Saturday 08:00-17:00

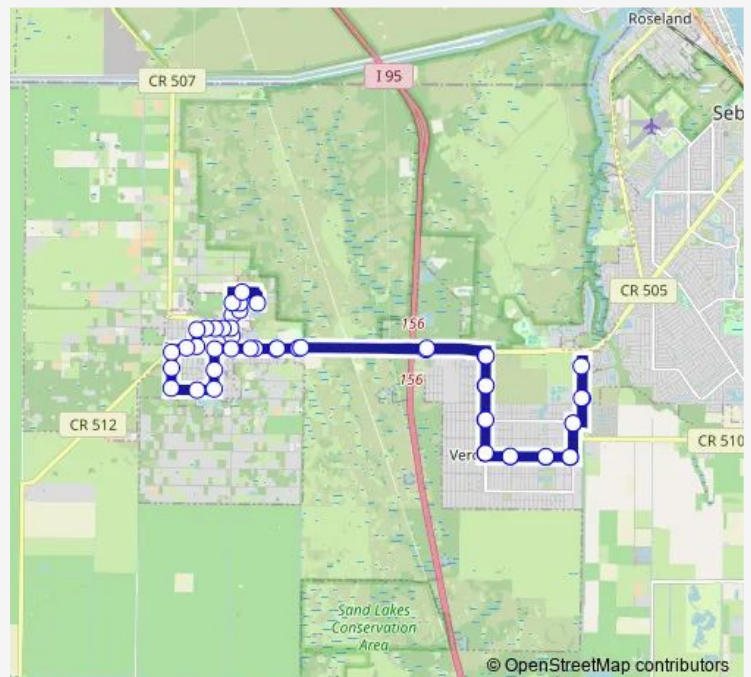
Sunday —

### Route info

Direction: Sonrise Apartments

Stops: 49

Trip Duration: 1 hour 0 min



Route 10

Willow St & SR 512

SR 512 & 125th Dr

Project Hope & Tcch

I-95 Interchange (Eb)

Sr 512 & 101st Ave

101st Ave & 91st St

101st Ave & 87th St

101st Ave & 83rd St

83rd St & 98th Ave

83rd St & 94th Ave

91st Ave & 83rd St

91st Ave & 87th St

Sebastian High School (Nb)

North County Hub

Sebastian High School (Sb)

91st Ave & 87th St (Sb)

91st Ave & 83rd St (Wb)

83rd St & 94th Ave (Wb)

83rd St & 98th Ave (Wb)

101st Ave & 83rd St (Nb)

101st Ave & 87th St (Nb)

101st Ave & 91st St (Nb)

SR 512 & 101st Ave (Nb)

I-95 Interchange (Wb)

Project Hope & Tcch (Wb)

SR 512 & 125th Dr (Wb)

SR 512 & Dollar General

SR 512 & 128th Ave (Wb)

Route 10 Bus time schedules and route maps are available in an offline PDF at [busmaps.com](https://busmaps.com). Use the [busmaps.com](https://busmaps.com) website to see live bus times, train schedule or subway schedule, and step-by-step directions for all public transit in Fellsmere

The schedule is provided in the local timezone. Times with "(+1)" indicate departures on the next day.

PDF file created on 2025-02-26

2024 BusMaps.com - All Rights Reserved