

Bus 458

[Go to website](#)

Direction

B.O-Eidingshn, SZ Nord — Vlotho, Bahnhof

15 stops

[Open route schedule](#)

B.O-Eidingshn, SZ Nord

B.O-Eidingshn, Zum Friedhof

Bad Oeynhausen, Schwarzer Weg

Bad Oeynhausen, Schulzentr Süd

Bad Oeynhausen, Bf/Zob

B.O-Rehme, Buddestraße

B.O-Rehme, Mühlenweg

B.O-Rehme, Karl-Brandt-Straße

B.O-Rehme, Meierfreundstraße

B.O-Rehme, Sachsenweg

B.O-Rehme, Gewerbegebiet

B.O-Babbenhsn, Weserstraße

B.O-Babbenhsn, Schmiedebrink

B.O-Babbenhsn, Deesberg. Allee

Vlotho, Bahnhof

Route schedule

B.O-Eidingshn, SZ Nord — Vlotho, Bahnhof

Monday 12:35-16:10

Tuesday 12:35-16:10

Wednesday 12:35-16:10

Thursday 12:35-16:10

Friday 12:35-16:10

Saturday —

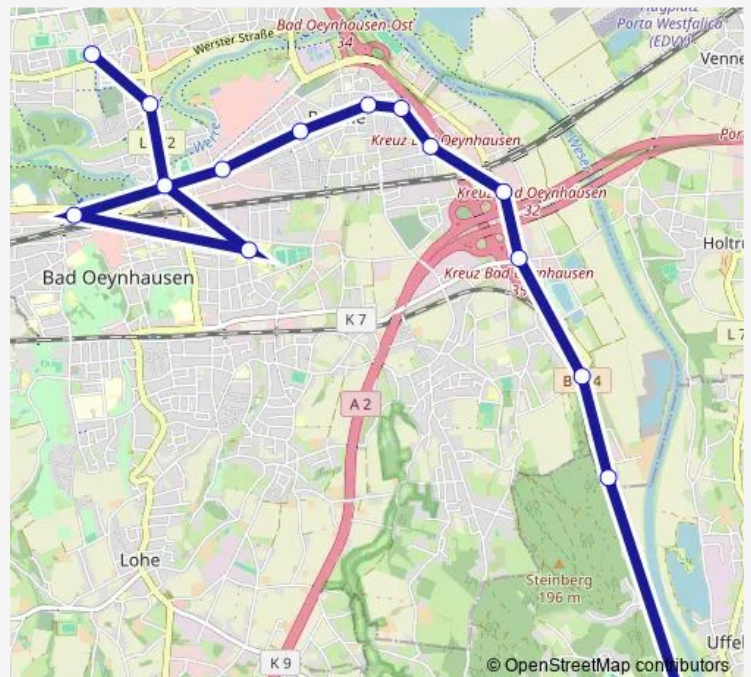
Sunday —

Route info

Direction: B.O-Eidingshn, SZ Nord

Stops: 15

Trip Duration: 0 hour 30 min



458 — Vlotho Bahnhof - Bad Oeynhausen ZOB - Schulzentrum Nord (Baustellenfahrplan ab 06.10.2020)

Direction

Vlotho, Bahnhof — B.O-Eidinghsn, SZ Nord

14 stops

[Open route schedule](#)

Vlotho, Bahnhof

B.O-Babbenhsn, Deesberg. Allee

B.O-Babbenhsn, Schmiedebrink

B.O-Babbenhsn, Weserstraße

B.O-Rehme, Gewerbegebiet

B.O-Rehme, Sachsenweg

B.O-Rehme, Meierfreundstraße

B.O-Rehme, Karl-Brandt-Straße

B.O-Rehme, Mühlenweg

B.O-Rehme, Buddestraße

Bad Oeynhausen, Schulzentr Süd

Bad Oeynhausen, Schwarzer Weg

B.O-Eidinghsn, Zum Friedhof

B.O-Eidinghsn, SZ Nord

Route schedule

Vlotho, Bahnhof — B.O-Eidinghsn, SZ Nord

Monday 06:51

Tuesday 06:51

Wednesday 06:51

Thursday 06:51

Friday 06:51

Saturday —

Sunday —

Route info

Direction: Vlotho, Bahnhof

Stops: 14

Trip Duration: 0 hour 25 min

458 Bus time schedules and route maps are available in an offline PDF at busmaps.com. Use the busmaps.com website to see live bus times, train schedule or subway schedule, and step-by-step directions for all public transit in Bad Oeynhausen

The schedule is provided in the local timezone. Times with "(+1)" indicate departures on the next day.

PDF file created on 2025-01-16

2024 BusMaps.com - All Rights Reserved