

Bus M-103 Almería - Los Pinos - Benahadux - Gádor Nn

[Go to website](#)

**Direction**

Gádor - Pueblo — Estación Intermodal

11 stops

[Open route schedule](#)

Gádor - Pueblo

Gádor - Entrada

Benahadux - Cajamar V

Benahadux - Iglesia

El Chuche

El Potro

Huércal - Los Pinos

Huércal - Club De Tenis

Pol. Ind. La Cepa

Almería - Bola Azul

Estación Intermodal

**Route schedule**

Gádor - Pueblo — Estación Intermodal

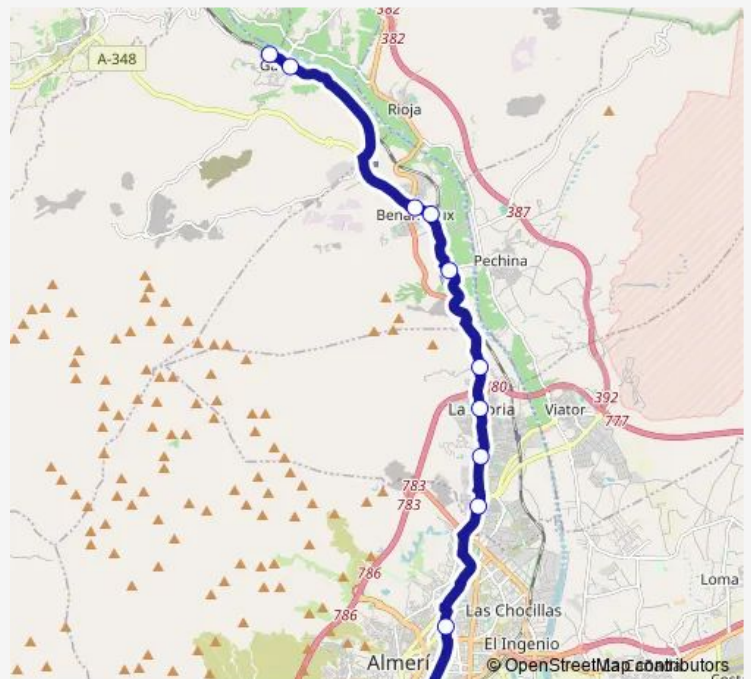
Monday	07:00-19:40
Tuesday	07:00-19:40
Wednesday	07:00-19:40
Thursday	07:00-19:40
Friday	07:00-19:40
Saturday	08:25-17:20
Sunday	17:20

**Route info**

Direction: Gádor - Pueblo

Stops: 11

Trip Duration: 0 hour 32 min



## Direction

Estación Intermodal — Gádor - Pueblo

14 stops

[Open route schedule](#)

Estación Intermodal

Almería - Bola Azul

Pol. Ind. La Cepa

Huércal - La Foca

Huércal - Los Pinos

El Potro

El Chuche

Benahadux - Iglesia

Benahadux - Cajamar

Rioja - Parque Mayores

Rioja - Bar Pirineos

El Abriojal

Gádor - Entrada

Gádor - Pueblo

## Route schedule

Estación Intermodal — Gádor - Pueblo

Monday 08:30-19:00

Tuesday 08:30-19:00

Wednesday 08:30-19:00

Thursday 08:30-19:00

Friday 08:30-19:00

Saturday 08:30-16:00

Sunday 08:30

## Route info

Direction: Estación Intermodal

Stops: 14

Trip Duration: 0 hour 40 min

M-103 Bus time schedules and route maps are available in an offline PDF at [busmaps.com](https://busmaps.com). Use the [busmaps.com](https://busmaps.com) website to see live bus times, train schedule or subway schedule, and step-by-step directions for all public transit in Huerca de Almeria

The schedule is provided in the local timezone. Times with "(+1)" indicate departures on the next day.

PDF file created on 2025-01-16

2024 BusMaps.com - All Rights Reserved