

Bus 196f Blackwood Interchange to City

Go to website

**Direction**

Zone A Blackwood Interchange — Stop Y2 King William St - West side

59 stops

[Open route schedule](#)

Zone A Blackwood Interchange

Stop 45 East Tce - West side

Stop 44 Watahuna Ave - North West side

Stop 43 Sycamore Cres - North East side

Stop 42 Gorse Ave - North side

Stop 41 Gorse Ave - North East side

Stop 40 Myrtle Rd - West side

Stop 39 Suffolk Rd - North side

Stop 38 Rankeys Hill Rd - South West side

Stop 37 Rankeys Hill Rd - West side

Stop 36 Hawthorndene Dr - South side

Stop 35 Hawthorndene Dr - South side

Stop 34 Hawthorndene Dr - South side

Stop 33 Rosella Ave - West side

Stop 32 Sun Valley Dr - West side

Stop 30 Hollywood Way - North West side

Stop 29 Hollywood Way - West side

Stop 27A Laffers Rd - South side

Stop 27 Laffers Rd - South side

Stop 26 Main Rd - West side

Stop 25 Main Rd - South West side

Route schedule

Zone A Blackwood Interchange — Stop Y2 King William St - West side

Monday 06:45-16:10

Tuesday 06:45-16:10

Wednesday 06:45-16:10

Thursday 06:45-16:10

Friday 06:45-16:10

Saturday —

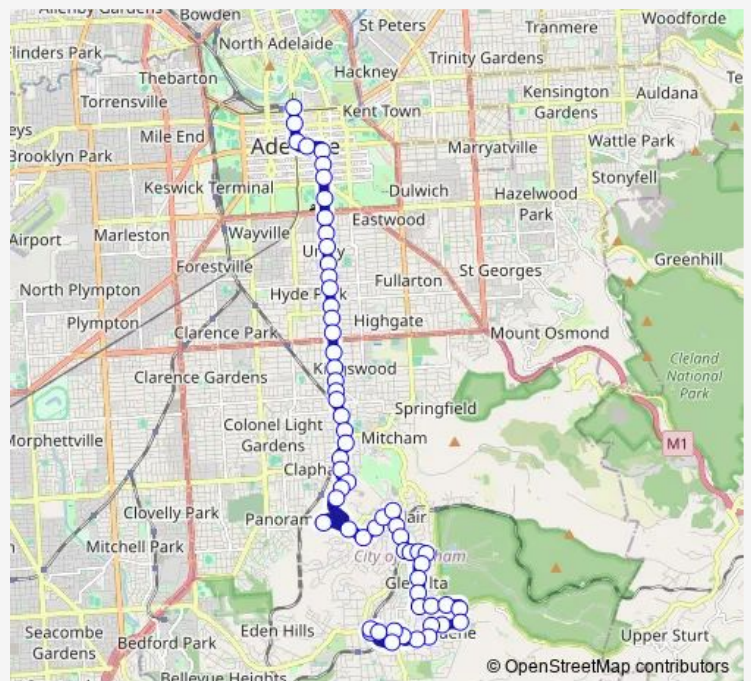
Sunday —

Route info

Direction: Zone A Blackwood Interchange

Stops: 59

Trip Duration: 0 hour 50 min



196f — Blackwood Interchange to City

Stop 24 Main Rd - West side

Stop 23 Main Rd - West side

Stop 22B Gloucester Ave - South East side

Stop 22A Gloucester Ave - South East side

Stop 22 Gloucester Ave - South East side

Stop 21A Kalyra Rd - South side

Stop 21 Belair Rd - South side

Stop 20B Belair Rd - North West side

Stop 20A Belair Rd - North West side

Stop 20 Belair Rd - South side

Stop 19 Belair Rd - West side

Stop 18 Belair Rd - West side

Stop 17 Belair Rd - West side

Stop 16 Belair Rd - West side

Stop 15 Belair Rd - West side

Stop 14 Belair Rd - West side

Stop 13 Belair Rd - West side

Stop 12 Belair Rd - West side

Stop 11 Belair Rd - West side

Stop 10 Belair Rd - West side

Stop 9 Unley Rd - West side

Stop 8 Unley Rd - West side

Stop 7 Unley Rd - West side

Stop 6 Unley Rd - West side

Stop 5 Unley Rd - West side

Stop 4 Unley Rd - West side

Stop 3 Unley Rd - West side

Stop 2 Unley Rd - West side

Stop 1 Unley Rd - West side

Stop O1 Unley Rd - West side

Stop P1 Pulteney St - West side

Stop R1 Pulteney St - West side

Stop S1 Pulteney St - West side

Stop T1 Wakefield St - South side

Stop U1 Wakefield St - South side

Stop V1 King William St - West side

Stop X1 King William St - West side

Stop Y2 King William St - West side

## Direction

Stop A3 King William Rd - East side — Zone B Blackwood Interchange

53 stops

[Open route schedule](#)

Stop A3 King William Rd - East side

Stop C3 King William St - East side

Stop F1 King William St - North East side

Stop G1 Wakefield St - North side

Stop G1 Pulteney St - East side

Stop I1 Pulteney St - East side

Stop K1 Pulteney St - East side

Stop L1 Unley Rd - East side

Stop 1 Unley Rd - East side

Stop 2 Unley Rd - East side

Stop 3 Unley Rd - East side

Stop 4 Unley Rd - East side

Stop 5 Unley Rd - East side

Stop 6 Unley Rd - East side

Stop 7 Unley Rd - East side

Stop 8 Unley Rd - East side

Stop 9 Unley Rd - East side

Stop 10 Belair Rd - East side

Stop 11 Belair Rd - East side

Stop 12 Belair Rd - East side

Stop 13 Belair Rd - East side

Stop 14 Belair Rd - East side

Stop 15 Belair Rd - East side

Stop 16 Belair Rd - East side

## Route schedule

Stop A3 King William Rd - East side — Zone B Blackwood Interchange

Monday 08:30-18:00

Tuesday 08:30-18:00

Wednesday 08:30-18:00

Thursday 08:30-18:00

Friday 08:30-18:00

Saturday —

Sunday —

## Route info

Direction: Stop A3 King William Rd - East side

Stops: 53

Trip Duration: 0 hour 52 min

Stop 17 Belair Rd - East side

Stop 18 Belair Rd - East side

Stop 18A Springbank Rd - South side

Stop 18B Springbank Rd - South side

Stop 18C Springbank Rd - South side

Stop 18D Springbank Rd - South side

Stop 18 Goodwood Rd - East side

Stop 19 Goodwood Rd - East side

Stop 20 Fiveash Dr - East side

Stop 21 Fiveash Dr - East side

Stop 22 Fiveash Dr - East side

Stop 23 Fiveash Dr - East side

Stop 24 Ayliffes Rd - South side

Stop 24A Ayliffes Rd - South side

Stop 26 Shepherds Hill Rd - East side

Stop 27 Shepherds Hill Rd - North side

Stop 27A Shepherds Hill Rd - North side

Stop 28 Shepherds Hill Rd - North East side

Stop 28A Shepherds Hill Rd - North East side

Stop 29 Shepherds Hill Rd - North side

Stop 29A Shepherds Hill Rd - North side

Stop 29B Shepherds Hill Rd - North West side

Stop 30 Shepherds Hill Rd - North West side

Stop 30A Shepherds Hill Rd - North West side

Stop 30B Shepherds Hill Rd - West side

Stop 30C Shepherds Hill Rd - North side

Stop 31 Shepherds Hill Rd - North side

Stop 31A Station Rd - North side

Zone B Blackwood Interchange



## Direction

Stop School Blackwood High Pick Up — Stop Y2 King William St - West side

57 stops

[Open route schedule](#)

Stop School Blackwood High Pick Up

Stop 30A Shepherds Hill Rd - North West side

Zone A Blackwood Interchange

Stop 33A Main Rd - South side

Stop 31 Shepherds Hill Rd - South side

Stop 30C Shepherds Hill Rd - South side

Stop 30B Shepherds Hill Rd - East side

Stop 30A Shepherds Hill Rd - South East side

Stop 30 Shepherds Hill Rd - South East side

Stop 29B Shepherds Hill Rd - South side

Stop 29A Shepherds Hill Rd - South side

Stop 29 Shepherds Hill Rd - South side

Stop 28A Shepherds Hill Rd - West side

Stop 28 Shepherds Hill Rd - South West side

Stop 27A Shepherds Hill Rd - South West side

Stop 27 Shepherds Hill Rd - South side

Stop 26 Shepherds Hill Rd - West side

Stop 25 Shepherds Hill Rd - West side

Stop 24A Ayliffes Rd - North side

Stop 24 Ayliffes Rd - North side

Stop 23 Fiveash Dr - West side

Stop 22 Fiveash Dr - West side

Stop 21 Fiveash Dr - West side

Stop 20 Fiveash Dr - West side

## Route schedule

Stop School Blackwood High Pick Up — Stop Y2 King William St - West side

Monday 14:32-16:10

Tuesday 14:32-16:10

Wednesday 14:32-16:10

Thursday 14:32-16:10

Friday 14:32-16:10

Saturday —

Sunday —

## Route info

Direction: Stop School Blackwood High Pick Up

Stops: 57

Trip Duration: 1 hour 5 min

Stop 19 Goodwood Rd - West side

Stop 18 Goodwood Rd - West side

Stop 18D Springbank Rd - North side

Stop 18C Springbank Rd - North side

Stop 18B Springbank Rd - North side

Stop 18A Springbank Rd - North side

Stop 18 Belair Rd - West side

Stop 17 Belair Rd - West side

Stop 16 Belair Rd - West side

Stop 15 Belair Rd - West side

Stop 14 Belair Rd - West side

Stop 13 Belair Rd - West side

Stop 12 Belair Rd - West side

Stop 11 Belair Rd - West side

Stop 10 Belair Rd - West side

Stop 9 Unley Rd - West side

Stop 8 Unley Rd - West side

Stop 7 Unley Rd - West side

Stop 6 Unley Rd - West side

Stop 5 Unley Rd - West side

Stop 4 Unley Rd - West side

Stop 3 Unley Rd - West side

Stop 2 Unley Rd - West side

Stop 1 Unley Rd - West side

Stop O1 Unley Rd - West side

Stop P1 Pulteney St - West side

Stop R1 Pulteney St - West side

Stop S1 Pulteney St - West side

Stop T1 Wakefield St - South side



Stop U1 Wakefield St - South side

Stop V1 King William St - West side

Stop X1 King William St - West side

Stop Y2 King William St - West side

## Direction

Stop A3 King William Rd - East side — Zone B Blackwood Interchange

60 stops

[Open route schedule](#)

Stop A3 King William Rd - East side

Stop C3 King William St - East side

Stop F1 King William St - North East side

Stop G1 Wakefield St - North side

Stop G1 Pulteney St - East side

Stop I1 Pulteney St - East side

Stop K1 Pulteney St - East side

Stop L1 Unley Rd - East side

Stop 1 Unley Rd - East side

Stop 2 Unley Rd - East side

Stop 3 Unley Rd - East side

Stop 4 Unley Rd - East side

Stop 5 Unley Rd - East side

Stop 6 Unley Rd - East side

Stop 7 Unley Rd - East side

Stop 8 Unley Rd - East side

Stop 9 Unley Rd - East side

Stop 10 Belair Rd - East side

Stop 11 Belair Rd - East side

Stop 12 Belair Rd - East side

Stop 13 Belair Rd - East side

Stop 14 Belair Rd - East side

Stop 15 Belair Rd - East side

Stop 16 Belair Rd - East side

## Route schedule

Stop A3 King William Rd - East side — Zone B Blackwood Interchange

Monday 08:30-18:00

Tuesday 08:30-18:00

Wednesday 08:30-18:00

Thursday 08:30-18:00

Friday 08:30-18:00

Saturday —

Sunday —

## Route info

Direction: Stop A3 King William Rd - East side

Stops: 60

Trip Duration: 1 hour 2 min

Stop 17 Belair Rd - East side

Stop 18 Belair Rd - East side

Stop 19 Belair Rd - East side

Stop 20 Belair Rd - East side

Stop 20A Belair Rd - South East side

Stop 20B Belair Rd - South East side

Stop 21 Belair Rd - North side

Stop 21A Kalyra Rd - North side

Stop 22 Gloucester Ave - North side

Stop 22A Gloucester Ave - North West side

Stop 22B Gloucester Ave - North West side

Stop 23 Main Rd - North East side

Stop 24 Main Rd - East side

Stop 25 Main Rd - North East side

Stop 26 Main Rd - East side

Stop 27 Laffers Rd - North side

Stop 27A Laffers Rd - North side

Stop 29 Hollywood Way - East side

Stop 30 Hollywood Way - South East side

Stop 32 Sun Valley Dr - East side

Stop 33 Rosella Ave - East side

Stop 34 Hawthorndene Dr - North side

Stop 35 Hawthorndene Dr - North side

Stop 36 Hawthorndene Dr - North side

Stop 37 Rankeys Hill Rd - East side

Stop 38 Rankeys Hill Rd - North East side

Stop 39 Suffolk Rd - South side

Stop 40 Suffolk Rd - South side

Stop 41 Gorse Ave - South West side

Stop 42 Gorse Ave - South side

Stop 43 Sycamore Cres - South West side

Stop 44 Watahuna Ave - South East side

Stop 45 Hewett Ave - East side

Stop 33A Main Rd - South side

Stop 31A Station Rd - North side

Zone B Blackwood Interchange

196f Bus time schedules and route maps are available in an offline PDF at [busmaps.com](https://busmaps.com). Use the [busmaps.com](https://busmaps.com) website to see live bus times, train schedule or subway schedule, and step-by-step directions for all public transit in Mitcham

The schedule is provided in the local timezone. Times with "(+1)" indicate departures on the next day.

PDF file created on 2025-01-31

2024 BusMaps.com - All Rights Reserved