

Direction

Rothenburg o.T. Förderschule — Höfen (b. Dombühl)

38 stops

[Open route schedule](#)

Rothenburg o.T. Förderschule

Rothenburg P1 Fr.-Hörner-Weg

Rothenburg Bleiche/Schulzentr.

Gepsattel Schule

Kirnberg (b. Gepsattel)

Pleikartshof

Rödersdorf

Speierhof

Schönbronn (b. Buch a.W.)

Oberbreitenau

Unterebreitenau Ortsmitte

Morlitzwinden

Oberndorf (b. Geslau)

Reinswinden

Schwabsroth

Kreuth (b. Geslau)

Dornhausen (b. Geslau)

Hürbel (b. Geslau)

Lauterbach (b. Geslau)

Buch a. Wald Ortsmitte

Buch am Wald Siedlung

Route schedule

Rothenburg o.T. Förderschule — Höfen (b. Dombühl)

Monday 11:20

Tuesday 11:20

Wednesday 11:20

Thursday 11:20

Friday 11:20

Saturday —

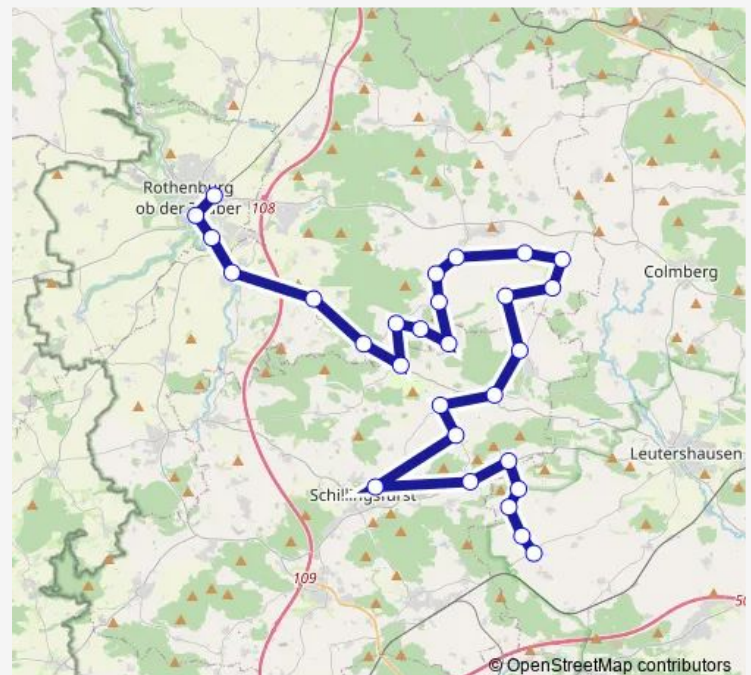
Sunday —

Route info

Direction: Rothenburg o.T. Förderschule

Stops: 38

Trip Duration: 1 hour 22 min



Hagenau (b. Buch a.W.)

Gastefelden

Traisdorf

Stilzendorf

Schorndorf

Altengreuth

Neureuth

Schwand (b. Leutershausen)

Weihersmühle (b. Leutershausen)

Hetzweiler

Brunst

Ziegelhaus (b. Dombühl)

Kloster Sulz Mitte

Bortenberg

Baimhofen

Binsenweiler

Höfen (b. Dombühl)

Direction

Brunst — Rothenburg ob der Tauber

28 stops

[Open route schedule](#)

Brunst

Hetzweiler

Weihersmühle (b.Leutershausen)

Schwand (b. Leutershausen)

Neureuth

Altengreuth

Schillingsfürst Wasserturm

Traisdorf

Gastenfelden

Hagenau (b. Buch a.W.)

Buch a. Wald Ortsmitte

Lauterbach (b. Geslau)

Hürbel (b. Geslau)

Dornhausen (b. Geslau)

Kreuth (b. Geslau)

Schwabsroth

Reinswinden

Oberndorf (b. Geslau)

Morlitzwinden

Unterbreitenau Ortsmitte

Oberbreitenau

Schönbronn (b. Buch a.W.)

Speierhof

Kirnberg (b. Gebsattel)

Gebsattel Schule

Route schedule

Brunst — Rothenburg ob der Tauber

Monday	—
Tuesday	—
Wednesday	—
Thursday	—
Friday	—
Saturday	07:09
Sunday	—

Route info

Direction: Brunst

Stops: 28

Trip Duration: 1 hour 5 min

Rothenburg Bleiche/Schulzentr.

Rothenburg P1 Fr.-Hörner-Weg

Rothenburg ob der Tauber

Direction

Rothenburg ob der Tauber — Brunst

28 stops

[Open route schedule](#)

Rothenburg ob der Tauber

Rothenburg P1 Fr.-Hörner-Weg

Rothenburg Bleiche/Schulzentr.

Gepsattel Schule

Kirnberg (b. Gepsattel)

Speierhof

Schönbronn (b. Buch a.W.)

Oberbreitenau

Unterebreitenau Ortsmitte

Morlitzwinden

Oberndorf (b. Geslau)

Reinswinden

Schwabsroth

Kreuth (b. Geslau)

Dornhausen (b. Geslau)

Hürbel (b. Geslau)

Lauterbach (b. Geslau)

Buch a. Wald Ortsmitte

Hagenau (b. Buch a.W.)

Gastengfelden

Traisdorf

Schillingsfürst Wasserturm

Altengreuth

Neureuth

Schwand (b. Leutershausen)

Route schedule

Rothenburg ob der Tauber — Brunst

Monday 16:50

Tuesday 16:50

Wednesday 16:50

Thursday 16:50

Friday 16:50

Saturday 11:59

Sunday —

Route info

Direction: Rothenburg ob der Tauber

Stops: 28

Trip Duration: 1 hour 7 min

Weihersmühle (b.Leutershausen)

Hetzweiler

Brunst

Direction

Stilzendorf — Geslau Siedlung

18 stops

[Open route schedule](#)

Stilzendorf

Traisdorf

Gastenfelden

Schönbronn (b. Buch a.W.)

Unterebreitenau Ortsmitte

Morlitzwinden

Hagenau (b. Buch a.W.)

Abzw. Berbersbach

Buch am Wald Siedlung

Buch a. Wald Ortsmitte

Dornhausen (b. Geslau)

Hürbel (b. Geslau)

Lauterbach (b. Geslau)

Oberndorf (b. Geslau)

Reinswinden

Schwabsroth

Geslau Ortsmitte

Geslau Siedlung

Route schedule

Stilzendorf — Geslau Siedlung

Monday 16:20

Tuesday 16:20

Wednesday 16:20

Thursday 16:20

Friday 16:20

Saturday —

Sunday —

Route info

Direction: Stilzendorf

Stops: 18

Trip Duration: 0 hour 29 min

Direction

Kirnberg (b. Gebsattel) — Rothenburg ob der Tauber

2 stops

[Open route schedule](#)

Kirnberg (b. Gebsattel)

Rothenburg ob der Tauber

Route schedule

Kirnberg (b. Gebsattel) — Rothenburg ob der Tauber

Monday 09:20

Tuesday 09:20

Wednesday 09:20

Thursday 09:20

Friday 09:20

Saturday —

Sunday —

Route info

Direction: Kirnberg (b. Gebsattel)

Stops: 2

Trip Duration: 0 hour 12 min

Direction

Bortenberg — Rothenburg ob der Tauber

21 stops

[Open route schedule](#)

Bortenberg

Baimhofen

Binsenweiler

Höfen (b. Dombühl)

Kloster Sulz Mitte

Brunst

Hetzweiler

Weihersmühle (b.Leutershausen)

Schwand (b. Leutershausen)

Neureuth

Altengreuth

Schillingsfürst Wasserturm

Traisdorf

Gastengelden

Hagenau (b. Buch a.W.)

Buch a. Wald Ortsmitte

Morlitzwinden

Schönbronn (b. Buch a.W.)

Speierhof

Rothenburg P1 Fr.-Hörner-Weg

Rothenburg ob der Tauber

Route schedule

Bortenberg — Rothenburg ob der Tauber

Monday 08:56

Tuesday 08:56

Wednesday 08:56

Thursday 08:56

Friday 08:56

Saturday —

Sunday —

Route info

Direction: Bortenberg

Stops: 21

Trip Duration: 1 hour 6 min

Direction

Stilzendorf — Höfen (b. Dombühl)

15 stops

[Open route schedule](#)

Stilzendorf

Schillingsfürst Wasserturm

Schorndorf

Altengreuth

Neureuth

Schwand (b. Leutershausen)

Weihersmühle (b. Leutershausen)

Hetzweiler

Brunst

Ziegelhaus (b. Dombühl)

Kloster Sulz Mitte

Bortenberg

Baimhofen

Binsenweiler

Höfen (b. Dombühl)

Route schedule

Stilzendorf — Höfen (b. Dombühl)

Monday 14:17

Tuesday 14:17

Wednesday 14:17

Thursday 14:17

Friday 14:17

Saturday —

Sunday —

Route info

Direction: Stilzendorf

Stops: 15

Trip Duration: 0 hour 26 min

Direction

Rothenburg ob der Tauber — Höfen (b. Dombühl)

38 stops

[Open route schedule](#)

Rothenburg ob der Tauber

Rothenburg P1 Fr.-Hörner-Weg

Rothenburg Bleiche/Schulzentr.

Kirnberg (b. Gebsattel)

Pleikartshof

Rödersdorf

Speierhof

Schönbronn (b. Buch a.W.)

Oberbreitenau

Unterbreitenau Ortsmitte

Morlitzwinden

Oberndorf (b. Geslau)

Reinswinden

Schwabsroth

Kreuth (b. Geslau)

Dornhausen (b. Geslau)

Hürbel (b. Geslau)

Lauterbach (b. Geslau)

Buch a. Wald Ortsmitte

Hagenau (b. Buch a.W.)

Gastengelden

Traisdorf

Stilzendorf

Neuweiler

Faulenberg

Route schedule

Rothenburg ob der Tauber — Höfen (b. Dombühl)

Monday 17:30

Tuesday 17:30

Wednesday 17:30

Thursday 17:30

Friday 17:30

Saturday —

Sunday —

Route info

Direction: Rothenburg ob der Tauber

Stops: 38

Trip Duration: 1 hour 20 min

Schorndorf

Altengreuth

Neureuth

Schwand (b. Leutershausen)

Weihersmühle (b. Leutershausen)

Hetzweiler

Brunst

Ziegelhaus (b. Dombühl)

Kloster Sulz Mitte

Bortenberg

Baimhofen

Binsenweiler

Höfen (b. Dombühl)

Direction

Schillingsfürst Volksschule — Höfen (b. Dombühl)

20 stops

[Open route schedule](#)

Schillingsfürst Volksschule

Wohnbach

Faulenberg

Neuweiler

Gaishof (b. Buch a.W.)

Schweikartswinden

Stilzendorf

Schorndorf

Altengreuth

Neureuth

Schwand (b. Leutershausen)

Weihermühle (b. Leutershausen)

Hetzweiler

Brunst

Ziegelhaus (b. Dombühl)

Kloster Sulz Mitte

Bortenberg

Baimhofen

Binsenweiler

Höfen (b. Dombühl)

Route schedule

Schillingsfürst Volksschule — Höfen (b. Dombühl)

Monday 16:08

Tuesday 16:08

Wednesday 16:08

Thursday 16:08

Friday 16:08

Saturday —

Sunday —

Route info

Direction: Schillingsfürst Volksschule

Stops: 20

Trip Duration: 0 hour 37 min

Direction

Rothenburg ob der Tauber — Höfen (b. Dombühl)

33 stops

[Open route schedule](#)

Rothenburg ob der Tauber

Rothenburg P1 Fr.-Hörner-Weg

Rothenburg Bleiche/Schulzentr.

Gepsattel Schule

Kirnberg (b. Gepsattel)

Speierhof

Schönbronn (b. Buch a.W.)

Oberbreitenau

Unterebreitenau Ortsmitte

Morlitzwinden

Oberndorf (b. Geslau)

Reinswinden

Schwabsroth

Kreuth (b. Geslau)

Dornhausen (b. Geslau)

Hürbel (b. Geslau)

Lauterbach (b. Geslau)

Buch a. Wald Ortsmitte

Hagenau (b. Buch a.W.)

Gastenfelden

Traisdorf

Schillingsfürst Wasserturm

Altengreuth

Neureuth

Schwand (b. Leutershausen)

Route schedule

Rothenburg ob der Tauber — Höfen (b. Dombühl)

Monday 11:59

Tuesday 11:59

Wednesday 11:59

Thursday 11:59

Friday 11:59

Saturday —

Sunday —

Route info

Direction: Rothenburg ob der Tauber

Stops: 33

Trip Duration: 1 hour 23 min

Weihersmühle (b.Leutershausen)

Hetzweiler

Brunst

Kloster Sulz Mitte

Bortenberg

Baimhofen

Binsenweiler

Höfen (b. Dombühl)

Direction

Brunst — Rothenburg o.T. Förderschule

28 stops

[Open route schedule](#)

Brunst

Hetzweiler

Weihersmühle (b.Leutershausen)

Schwand (b. Leutershausen)

Neureuth

Altengreuth

Traisdorf

Gastengelden

Hagenau (b. Buch a.W.)

Buch a. Wald Ortsmitte

Lauterbach (b. Geslau)

Hürbel (b. Geslau)

Dornhausen (b. Geslau)

Kreuth (b. Geslau)

Schwabsroth

Reinswinden

Oberndorf (b. Geslau)

Morlitzwinden

Unterbreitenau Ortsmitte

Oberbreitenau

Schönbronn (b. Buch a.W.)

Speierhof

Kirnberg (b. Gebsattel)

Gebsattel Schule

Rothenburg Bleiche/Schulzentr.

Route schedule

Brunst — Rothenburg o.T. Förderschule

Monday	06:47
Tuesday	06:47
Wednesday	06:47
Thursday	06:47
Friday	06:47
Saturday	—
Sunday	—

Route info

Direction: Brunst

Stops: 28

Trip Duration: 1 hour 3 min

Rothenburg P1 Fr.-Hörner-Weg

Rothenburg ob der Tauber

Rothenburg o.T. Förderschule

856 Bus time schedules and route maps are available in an offline PDF at busmaps.com. Use the busmaps.com website to see live bus times, train schedule or subway schedule, and step-by-step directions for all public transit in Buch am Wald

The schedule is provided in the local timezone. Times with "(+1)" indicate departures on the next day.

PDF file created on 2025-01-16

2024 BusMaps.com - All Rights Reserved