

## Ferry やまさ海運 ( 軍艦島上陸周遊 ~ 長崎港 )

[Go to website](#)

### Direction

端島 ( 軍艦島 ) — 長崎港ターミナル ( 大波止 )

2 stops

[Open route schedule](#)

端島 ( 軍艦島 )

長崎港ターミナル ( 大波止 )

### Route schedule

端島 ( 軍艦島 ) — 長崎港ターミナル ( 大波止 )

Monday 10:30-14:30

Tuesday 10:30-14:30

Wednesday 10:30-14:30

Thursday 10:30-14:30

Friday 10:30-14:30

Saturday 10:30-14:30

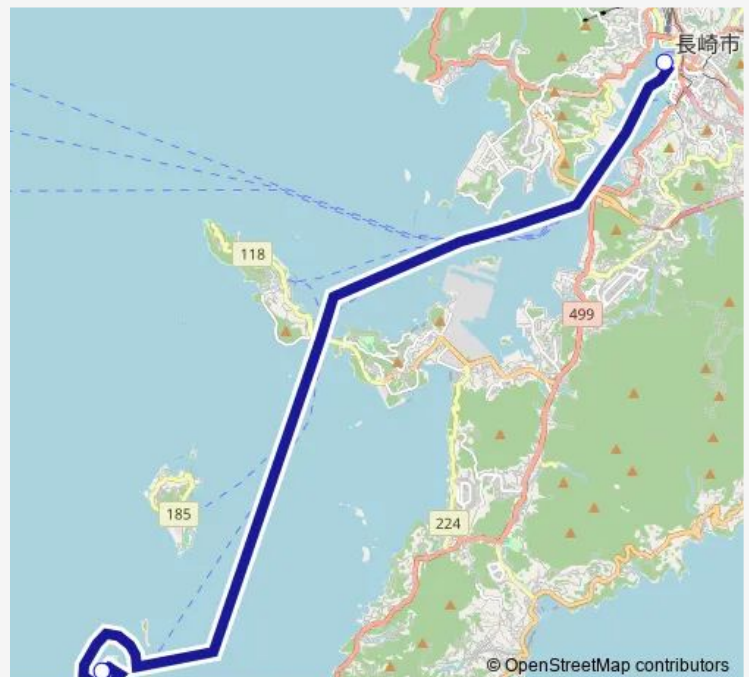
Sunday 10:30-14:30

### Route info

Direction: 端島 ( 軍艦島 )

Stops: 2

Trip Duration: 1 hour 0 min



■ やまさ海運 ( 軍艦島上陸周遊 ~ 長崎港 )

Ferry time schedules and route maps are available in an offline PDF at [busmaps.com](https://busmaps.com). Use the [busmaps.com](https://busmaps.com) website to see live bus times, train schedule or subway schedule, and step-by-step directions for all public transit in Nagasaki

The schedule is provided in the local timezone. Times with "(+1)" indicate departures on the next day.

PDF file created on 2025-02-26

2024 BusMaps.com - All Rights Reserved