

## Bus 482 Elizabeth Interchange to Roma Mitchell Secondary College

[Go to website](#)

### Direction

Zone C Elizabeth Interchange — Zone A Roma Mitchell Secondary College

65 stops

[Open route schedule](#)

Zone C Elizabeth Interchange

Zone D Elizabeth City Centre - North West side

Stop 63 Philip Hwy - East side

Stop 62 Philip Hwy - South East side

Stop 61 Philip Hwy - South East side

Stop 60 Philip Hwy - South East side

Stop 59 Philip Hwy - South East side

Stop 58 Philip Hwy - South East side

Stop 57 Hogarth Rd - North side

Stop 56A Hogarth Rd - North side

Stop 56 Hogarth Rd - North side

Stop 55A Mofflin Rd - East side

Stop 55 Mofflin Rd - East side

Stop 54C Oldham Rd - North side

Stop 54B Haydown Rd - East side

Stop 54A John Rice Ave - South East side

Stop 54 John Rice Ave - South East side

Stop 53C John Rice Ave - South East side

Stop 53B Jarvis Rd - East side

Stop 53A Jarvis Rd - South East side

### Route schedule

Zone C Elizabeth Interchange — Zone A Roma Mitchell Secondary College

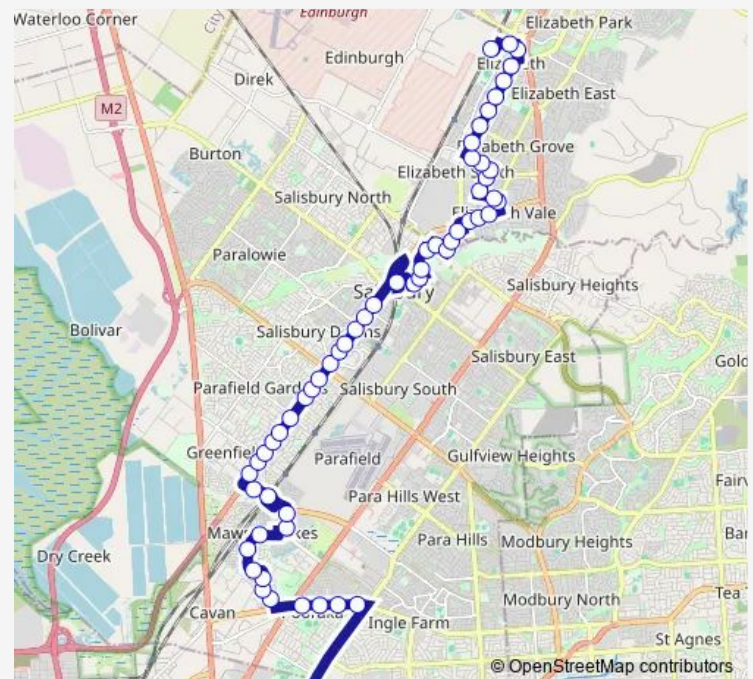
Monday	07:21-07:22
Tuesday	07:21-07:22
Wednesday	07:21-07:22
Thursday	07:21-07:22
Friday	07:21-07:22
Saturday	—
Sunday	—

### Route info

Direction: Zone C Elizabeth Interchange

Stops: 65

Trip Duration: 1 hour 9 min



482 — Elizabeth Interchange to Roma Mitchell Secondary College

Stop 53 Jarvis Rd - South East side

Stop 52A Porter St - South West side

Stop 52 Commercial Rd - South East side

Stop 51 Commercial Rd - North East side

Stop 50/A John St - South side

Stop 49 Church St - West side

Zone I Salisbury Interchange - East Side

Stop 46 Salisbury Hwy - East side

Stop 45 Salisbury Hwy - East side

Stop 44 Salisbury Hwy - South East side

Stop 43 Salisbury Hwy - East side

Stop 42 Salisbury Hwy - East side

Stop 41 Salisbury Hwy - South East side

Stop 40 Salisbury Hwy - East side

Stop 39 Salisbury Hwy - East side

Stop 38 Salisbury Hwy - South East side

Stop 37 Salisbury Hwy - South East side

Stop 36 Salisbury Hwy - South East side

Stop 35 Salisbury Hwy - South East side

Stop 34R Salisbury Hwy - South East side

Stop 34U Salisbury Hwy - East side

Stop 34Q Salisbury Hwy - East side

Stop 34P Elder Smith Rd - North side

Zone D Mawson Interchange

Stop 34L Main St - East side

Zone B Mawson Central Interchange - South side

Stop 33F Mawson Lakes Blvd - South side

Stop 33E Mawson Lakes Blvd - East side

Stop 33D Mawson Lakes Blvd - North side

Stop 33C Mawson Lakes Blvd - East side

Stop 33B Mawson Lakes Blvd - East side

Stop 33A Mawson Lakes Blvd - North East side

Stop 39 Montague Rd - North side

Stop 38 Montague Rd - North side

Stop 37 Montague Rd - North side

Stop 37A Montague Rd - North side

Stop 38 Bridge Rd - East side

Stop 37 Bridge Rd - East side

Stop 36 Bridge Rd - East side

Stop 35 Bridge Rd - East side

Stop 34 Bridge Rd - East side

Stop 33 Bridge Rd - East side

Stop 32 Briens Rd - East side

Stop 31 Briens Rd - East side

Zone A Roma Mitchell Secondary College

## Direction

Zone C Roma Mitchell Secondary College — Elizabeth Interchange Terminus

58 stops

[Open route schedule](#)

Zone C Roma Mitchell Secondary College

Stop 37A Montague Rd - South side

Stop 37 Montague Rd - South side

Stop 38 Montague Rd - South side

Stop 39 Montague Rd - South side

Stop 33A Mawson Lakes Blvd - South West side

Stop 33B Mawson Lakes Blvd - West side

Stop 33C Mawson Lakes Blvd - West side

Stop 33D Mawson Lakes Blvd - South side

Stop 33E Mawson Lakes Blvd - West side

Stop 33F Mawson Lakes Blvd - North side

Zone A Main St - West side

Stop 34L Main St - West side

Zone B Mawson Interchange

Stop 34P Elder Smith Rd - South side

Stop 34Q Salisbury Hwy - North West side

Stop 34U Salisbury Hwy - West side

Stop 34R Salisbury Hwy - North West side

Stop 35 Salisbury Hwy - North West side

Stop 36 Salisbury Hwy - North West side

Stop 37 Salisbury Hwy - North West side

Stop 38 Salisbury Hwy - North West side

Stop 39 Salisbury Hwy - West side

Stop 40 Salisbury Hwy - West side

## Route schedule

Zone C Roma Mitchell Secondary College — Elizabeth Interchange Terminus

Monday 15:25-15:26

Tuesday 15:25-15:26

Wednesday 14:35-14:36

Thursday 15:25-15:26

Friday 15:25-15:26

Saturday —

Sunday —

## Route info

Direction: Zone C Roma Mitchell Secondary College

Stops: 58

Trip Duration: 1 hour 3 min

Stop 41 Salisbury Hwy - West side

Stop 42 Salisbury Hwy - West side

Stop 43 Salisbury Hwy - West side

Stop 44 Salisbury Hwy - West side

Stop 45 Salisbury Hwy - West side

Stop 46 Salisbury Hwy - North West side

Zone F Salisbury Interchange - East Side

Stop 49 Wiltshire St - North side

Stop 50/E Ann St - West side

Stop 51 Commercial Rd - South West side

Stop 52 Brian St - North East side

Stop 52A Porter St - North East side

Stop 53 Jarvis Rd - North West side

Stop 53A Jarvis Rd - North West side

Stop 53B Hamdon Rd - North side

Stop 53C John Rice Ave - North West side

Stop 54 John Rice Ave - North West side

Stop 54A John Rice Ave - North West side

Stop 54B Haydown Rd - West side

Stop 54C Oldham Rd - South side

Stop 55 Mofflin Rd - West side

Stop 55A Mofflin Rd - West side

Stop 56 Mofflin Rd - West side

Stop 56A Hogarth Rd - South side

Stop 57 Hogarth Rd - South side

Stop 58 Philip Hwy - North West side

Stop 59 Philip Hwy - North West side

Stop 60 Philip Hwy - North West side

Stop 61 Philip Hwy - North West side

Stop 62 Philip Hwy - North West side

Stop 63 Philip Hwy - West side

Stop 64B Playford Blvd - West side

Zone E Elizabeth City Centre - South side

Elizabeth Interchange Terminus

482 Bus time schedules and route maps are available in an offline PDF at [busmaps.com](https://busmaps.com). Use the [busmaps.com](https://busmaps.com) website to see live bus times, train schedule or subway schedule, and step-by-step directions for all public transit in Adelaide

The schedule is provided in the local timezone. Times with "(+1)" indicate departures on the next day.

PDF file created on 2025-01-16

2024 BusMaps.com - All Rights Reserved