

Bus XG605033 Ourense E.I.- Parque Tecnolóxico-Carballeira-Ourense E.I.

[Go to website](#)

Direction

Ourense E.I. — Ourense E.I.

54 stops

[Open route schedule](#)

Ourense E.I.

Ourense (Marín bajo puent

Rúa Curros Enríquez

Parque De San Lázaro

Alameda

Xardín do Posío

Avda. Zamora 34

Avda. Zamora 84

Santo Cristo

O Piñeirál

San Cibrao desvío Polígono

SAN Cibrao (Restarurante

Polígono Barreiros (Apers

Polígono Barreiros (Roton

Ponte Noalla (casa antes

Reboredo

Pol. SAN Cibrao R-2-4

RUA 3 (Padel Prix)

RÚA 4 (LA Región)

RÚA 4 (Adolfo Domínguez)

Pol. San Cibráo r-1-3-7

Route schedule

Ourense E.I. — Ourense E.I.

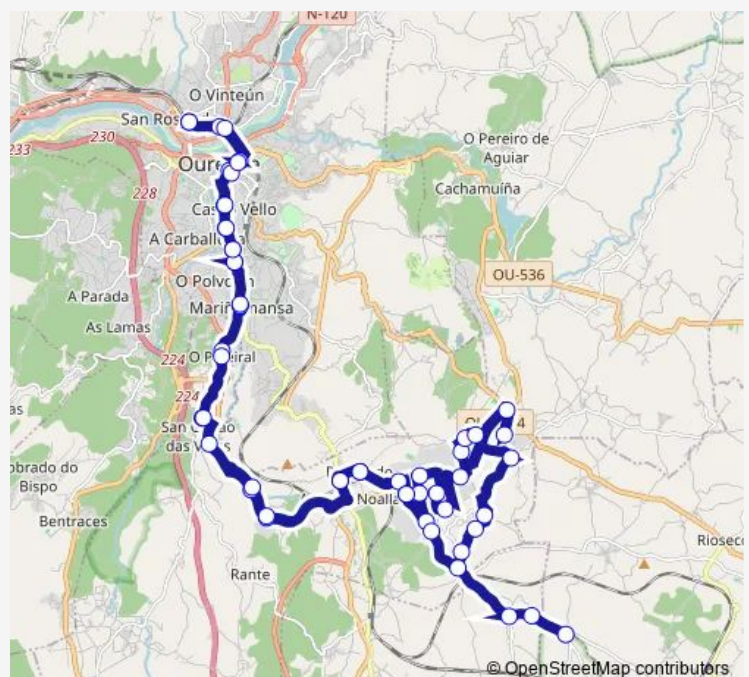
Monday	08:05
Tuesday	08:05
Wednesday	08:05
Thursday	08:05
Friday	08:05
Saturday	—
Sunday	—

Route info

Direction: Ourense E.I.

Stops: 54

Trip Duration: 1 hour 22 min



■ XG605033 — Ourense E.I.- Parque Tecnolóxico-Carballeira-Ourense E.I.

RÚA 6 (Aceites Abril)

RUA 6 (Marquesiña Dismope

RUA 1 (Superfuel)

Sector C (Estrella Galici

Cemiterio

Azkar

Parque Tecnolóxico (Roton

Parque Tecnolóxico (Recin

Valiñas (cruce)

Carballeira

A Mioteira

Santa Cruz DA Rabeda

Cruce Outeiro DE Laxe (Ou

Venda Do Río

Pereiras

Lameira

A Castellana

RUA 3 (Padel Prix)

Reboredo

Ponte Noalla (casa antes

Polígono Barreiros (Roton

Polígono Barreiros (Apers

San Cibrao desvío Polígon

O Piñeiral

Santo Cristo

Avda. Zamora 84

Avda. Zamora 34

Xardín Do Posío

Alameda

Parque de San Lázaro

Rúa Curros Enríquez

Ourense (Marín bajo puent

Ourense E.I.

XG605033 Bus time schedules and route maps are available in an offline PDF at busmaps.com. Use the busmaps.com website to see live bus times, train schedule or subway schedule, and step-by-step directions for all public transit in Ourense

The schedule is provided in the local timezone. Times with "(+1)" indicate departures on the next day.

PDF file created on 2025-01-16

2024 BusMaps.com - All Rights Reserved