

Bus Montebello (RM-VT) - Magliano Romano # Aa814d

[Go to website](#)

Direction

Roma | Stazione Montebello # f16001 — Magliano R. | Via Magliano # f11394

29 stops

[Open route schedule](#)

Roma | Stazione Montebello # f16001

Roma | Via Flaminia Via Vignanello # f2368

Roma | Via Flaminia Via Cornalba # f2365

Roma | Via Flaminia, 1850-1860 # f2238

Roma | Stazione Sacrofano # f2239

Roma | Via Flaminia (Quarticciolo) # f2241

Riano | Via Flaminia Via Colle Rose # f2242

Riano | Via Flaminia Via Codette # f2243

Riano | Via Flaminia (Stazione) # f2244

Castelnuovo Porto | Monte Cardeto # f2247

Castelnuovo Porto | Via Flaminia Via Olivi # f2248

Castelnuovo Porto | Via Flaminia Via Monte d'Arca # f2249

Castelnuovo Porto | Stazione # f2250

Morlupo | Via Flaminia (Valle la Posta) # f2251

Morlupo | Stazione # f2252

Morlupo | Via Flaminia Via Grotte # f2253

Morlupo | Stazione Magliano / Ist superiore Campagnanese # f11527

Morlupo | Via Campagnanese (Km 1) # f11515

Morlupo | Via Campagnanese Via Monte Cucco # f11517

Route schedule

Roma | Stazione Montebello # f16001 — Magliano R. | Via Magliano # f11394

Monday 18:45

Tuesday 18:45

Wednesday 18:45

Thursday 18:45

Friday 18:45

Saturday 07:35-18:45

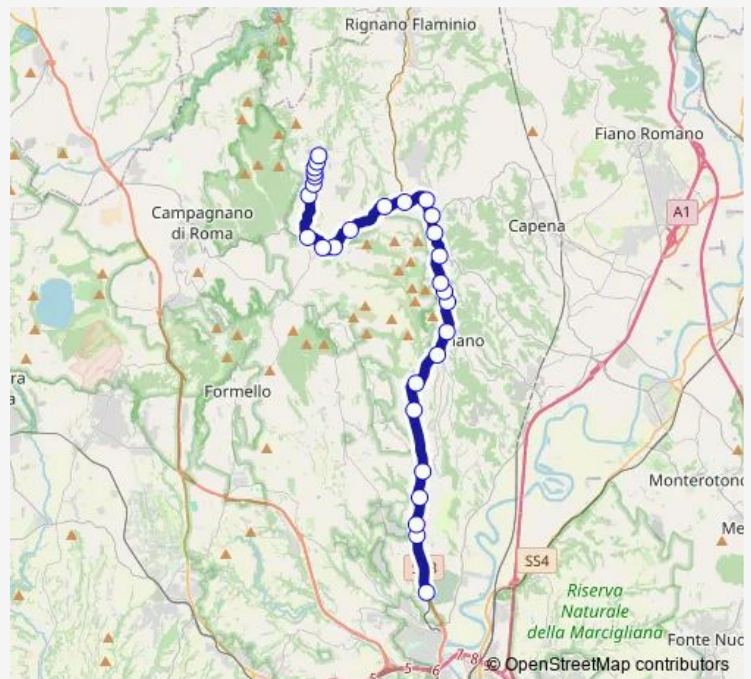
Sunday —

Route info

Direction: Roma | Stazione Montebello # f16001

Stops: 29

Trip Duration: 0 hour 50 min



Montebello (RM-VT) - Magliano Romano # Aa814d

Sacrofano | Via Campagnese Via Monte Solfatare # f11518

Sacrofano | Via Campagnese (Valle Bianchella) # f11519

Sacrofano | Via Campagnese Via Magliano # f11520

Magliano R. | Via Romana Via Valle Denari # f11388

Magliano R. | Via Romana Via Patinelle # f11389

Magliano R. | Via Romana (Cappella) # f11390

Magliano R. | Via Romana Via Croci # f11391

Magliano R. | Piazza Risorgimento # f11396

Magliano R. | Via Carmine # f11393

Magliano R. | Via Magliano # f11394

Bus time schedules and route maps are available in an offline PDF at busmaps.com. Use the busmaps.com website to see live bus times, train schedule or subway schedule, and step-by-step directions for all public transit in Magliano Romano

The schedule is provided in the local timezone. Times with "(+1)" indicate departures on the next day.

PDF file created on 2025-01-16

2024 BusMaps.com - All Rights Reserved