

## Bus RE8

[Go to website](#)

### Direction

Reuler, Centre Scolaire — Grevels, Ieweschten Eck

18 stops

[Open route schedule](#)

Reuler, Centre Scolaire

Wiltz, Lann Quai 3

Wiltz, Pompjeesbau

Wiltz, Lycée du Nord

Wiltz, Clinique

Wiltz, Brandbau

Wiltz, Belle-View

Wiltz, Batzendelt

Nocher-Route, An der Delt

Nocher-Route, Zenner

Nocher, Um Knupp

Goesdorf, Maeschgaart

Goesdorf, Pompjeën

Heischtergronn, Beim Bréckert

Merscheid (Heiderscheid), Merscheid

Grevels, Enneschten Eck

Grevels, Zentrum

Grevels, Ieweschten Eck

### Route schedule

Reuler, Centre Scolaire — Grevels, Ieweschten Eck

Monday 16:05

Tuesday 12:10

Wednesday 16:05

Thursday 12:10

Friday 16:05

Saturday —

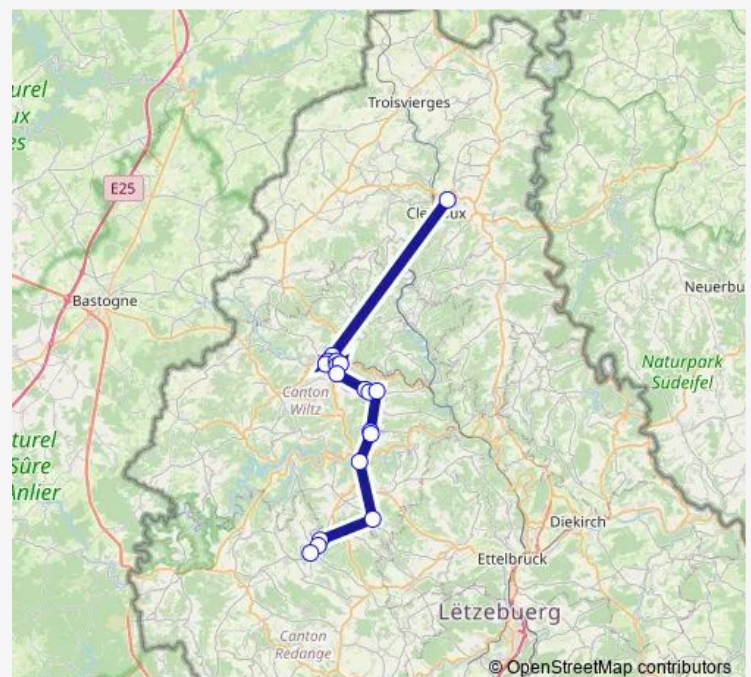
Sunday —

### Route info

Direction: Reuler, Centre Scolaire

Stops: 18

Trip Duration: 1 hour 4 min



RE8

BusMaps

## Direction

Grevels, Ieweschten Eck — Reuler, Centre Scolaire

18 stops

[Open route schedule](#)

Grevels, Ieweschten Eck

Grevels, Zentrum

Grevels, Enneschten Eck

Merscheid (Heiderscheid), Merscheid

Heischtergronn, Beim Bréckert

Goesdorf, Pompjeën

Goesdorf, Maeschgaart

Nocher, Um Knupp

Nocher-Route, Zenner

Nocher-Route, An der Delt

Wiltz, Batzendelt

Wiltz, Belle-Vue

Wiltz, Brandbau

Wiltz, Clinique

Wiltz, Lycée du Nord

Wiltz, Pompjeesbau

Wiltz, Lann Quai 2

Reuler, Centre Scolaire

## Route schedule

Grevels, Ieweschten Eck — Reuler, Centre Scolaire

Monday 06:40

Tuesday 06:40

Wednesday 06:40

Thursday 06:40

Friday 06:40

Saturday —

Sunday —

## Route info

Direction: Grevels, Ieweschten Eck

Stops: 18

Trip Duration: 1 hour 5 min

RE8 Bus time schedules and route maps are available in an offline PDF at [busmaps.com](https://busmaps.com). Use the [busmaps.com](https://busmaps.com) website to see live bus times, train schedule or subway schedule, and step-by-step directions for all public transit in Wiltz

The schedule is provided in the local timezone. Times with "(+1)" indicate departures on the next day.

PDF file created on 2025-01-16

2024 BusMaps.com - All Rights Reserved