

Bus 50 Blue Hills Ave

[Go to website](#)

Direction

Sacred Heart Lot @ Wintonbury Ave — Main St @ Gold St

57 stops

[Open route schedule](#)

Sacred Heart Lot @ Wintonbury Ave

Wintonbury Ave @ Jerome Ave

Jerome Ave @ Park Ave

Park Ave @ Seneca Rd

Park Ave @ Amazing Plaza

Park Ave @ Huckleberry Ln

Park Ave @ opp Revere Dr

Park Ave @ 451 Park Ave

Park Ave @ Tyler St

Tyler St @ 81 Tyler St

Tyler St @ opp Rockwell Ave

Tyler St @ opp Dale Ave

Stop & Shop @ Copaco

Burlington Coat @ Copaco

Cottage Grove Rd @ Charter Ave

Cottage Grove Rd @ Hillcrest Ave

Cottage Grove Rd @ Albemarle Rd

Walsh St @ opp Neighborhood Ctr

Walsh St @ Blue Hills Ave

Blue Hills Ave @ Porter Ave

Blue Hills Ave @ Britton Dr

Route schedule

Sacred Heart Lot @ Wintonbury Ave — Main St @ Gold St

Monday 05:04-01:14⁺¹

Tuesday 05:04-01:14⁺¹

Wednesday 05:04-01:14⁺¹

Thursday 05:04-01:14⁺¹

Friday 05:04-01:14⁺¹

Saturday 07:05-23:18

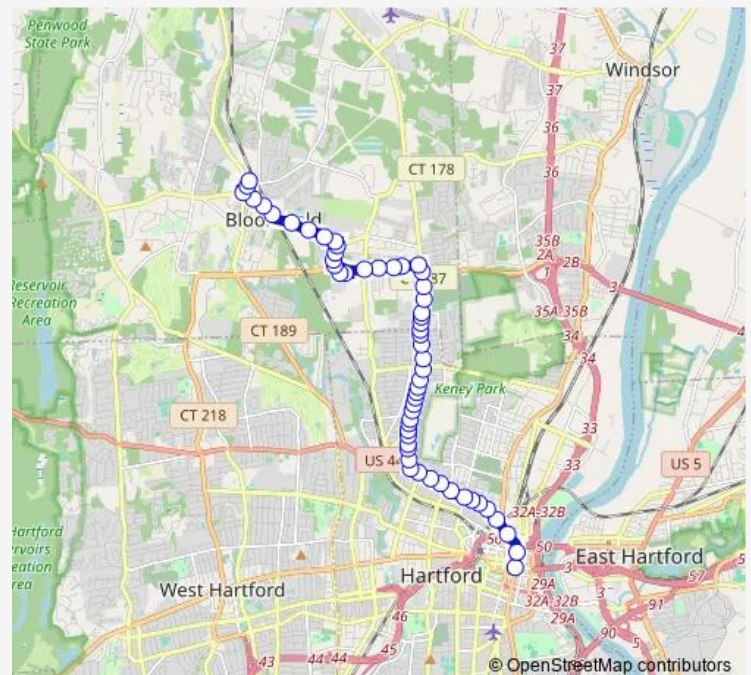
Sunday —

Route info

Direction: Sacred Heart Lot @ Wintonbury Ave

Stops: 57

Trip Duration: 0 hour 38 min



50 — Blue Hills Ave

Blue Hills Ave @ Opp Elizabeth Ave

Blue Hills Ave @ Hubbard St

Blue Hills Ave @ Darby St

Blue Hills Ave @ Brookline Ave

Blue Hills Ave @ Euclid St W

Blue Hills Ave @ Harold St

Blue Hills Ave @ Opp Boothbay St

Blue Hills Ave @ Litchfield St

Blue Hills Ave @ Tower Ave

Blue Hills Ave @ Branford St

Blue Hills Ave @ Andover St

Blue Hills Ave @ Holcomb St

Blue Hills Ave @ Colebrook St

Blue Hills Ave @ Pembroke St

Blue Hills Ave @ Thomaston St

Blue Hills Ave @ Chatham St

Blue Hills Ave @ Hebron St

Blue Hills Ave @ Sharon St

Blue Hills Ave @ Burlington St

Blue Hills Ave @ Westbourne Pkwy

Blue Hills Ave @ Norfolk St

Blue Hills Ave @ Opp Greenfield St

Albany Ave @ Collin Bennett Building

Albany Ave @ Woodland St

Albany Ave @ opp Deerfield Ave

Albany Ave @ Sigourney St

Albany Ave @ Burton St

Albany Ave @ Garden St

Albany Ave @ Brook St

Albany Ave @ Edwards St

Albany Ave @ Chestnut St

Albany Ave @ 62 Albany Ave

Main St @ Albany Ave

Main St @ Trumbull St

Main St @ Pratt St

Main St @ Gold St

Direction

Main St @ 750 Main St — Cigna Campus Way @ Met Life

55 stops

[Open route schedule](#)

Main St @ 750 Main St

Main St @ opp Church St

Main St @ Dunkin Donuts Park

Albany Ave @ Main St

Albany Ave @ East St

Albany Ave @ Green St

Albany Ave @ Brook St

Albany Ave @ Garden St

Albany Ave @ Vine St

Albany Ave @ Edgewood St

Albany Ave @ Deerfield Ave

Albany Ave @ Woodland St

Albany Ave @ Blue Hills Ave

Blue Hills Ave @ Greenfield St

Blue Hills Ave @ Opp Norfolk St

Blue Hills Ave @ Westbourne Pkwy

Blue Hills Ave @ Opp Burlington St

Blue Hills Ave @ Opp Sharon St

Blue Hills Ave @ Opp Hebron St

Blue Hills Ave @ Opp Chatham St

Blue Hills Ave @ Thomaston St

Blue Hills Ave @ Pembroke St

Blue Hills Ave @ Colebrook St

Blue Hills Ave @ Holcomb St

Blue Hills Ave @ Opp Andover St

Route schedule

Main St @ 750 Main St — Cigna Campus Way @ Met Life

Monday 05:05-17:15

Tuesday 05:05-17:15

Wednesday 05:05-17:15

Thursday 05:05-17:15

Friday 05:05-17:15

Saturday —

Sunday —

Route info

Direction: Main St @ 750 Main St

Stops: 55

Trip Duration: 0 hour 41 min

Blue Hills Ave @ Branford St

Blue Hills Ave @ Tower Ave

Blue Hills Ave @ Opp Litchfield St

Blue Hills Ave @ Opp Harold St

Blue Hills Ave @ E Euclid St

Blue Hills Ave @ E Morningside St

Blue Hills Ave @ Gilbert Ave

Blue Hills Ave @ Merriam Ave

Blue Hills Ave @ Elizabeth Ave

Blue Hills Ave @ Mt St Benedict

Blue Hills Ave @ Opp Dunkin Donuts

Blue Hills Ave @ Marguerite Ave

Walsh St @ Blue Hills Ave

Walsh St @ Neighborhood Ctr

Cottage Grove Rd @ Chapel St

Cottage Grove Rd @ Opp Hillcrest Ave

Cottage Grove Rd @ School St

Copaco @ McDonald's

Copaco @ IHOP

Cottage Grove Rd @ Tyler St

Cottage Grove Rd @ Cottage Grove Cir

Cottage Grove Rd @ Lincoln Terr

Cottage Grove Rd @ Savin Rd

Cottage Grove Rd @ Jolley Dr

Cottage Grove Rd @ 580 Cottage Grove Rd

Cottage Grove Rd @ Bloomfield Farms

Cottage Grove Rd @ Prospect St

Cottage Grove Rd @ Bloomfield Ave

Cigna Campus Way @ Opp Wilde Building

Cigna Campus Way @ Met Life

Direction

Sacred Heart Lot @ Wintonbury Ave — Main St @ Pearl St

57 stops

[Open route schedule](#)

Sacred Heart Lot @ Wintonbury Ave

Wintonbury Ave @ Jerome Ave

Jerome Ave @ Park Ave

Park Ave @ Seneca Rd

Park Ave @ Amazing Plaza

Park Ave @ Huckleberry Ln

Park Ave @ opp Revere Dr

Park Ave @ 451 Park Ave

Park Ave @ Tyler St

Tyler St @ 81 Tyler St

Tyler St @ opp Rockwell Ave

Tyler St @ opp Dale Ave

Stop & Shop @ Copaco

Burlington Coat @ Copaco

Cottage Grove Rd @ Charter Ave

Cottage Grove Rd @ Hillcrest Ave

Cottage Grove Rd @ Albemarle Rd

Walsh St @ opp Neighborhood Ctr

Walsh St @ Blue Hills Ave

Blue Hills Ave @ Porter Ave

Blue Hills Ave @ Britton Dr

Blue Hills Ave @ Opp Elizabeth Ave

Blue Hills Ave @ Hubbard St

Blue Hills Ave @ Darby St

Route schedule

Sacred Heart Lot @ Wintonbury Ave — Main St @ Pearl St

Monday —

Tuesday —

Wednesday 07:12-17:42

Thursday —

Friday —

Saturday —

Sunday —

Route info

Direction: Sacred Heart Lot @ Wintonbury Ave

Stops: 57

Trip Duration: 0 hour 38 min

Blue Hills Ave @ Brookline Ave

Blue Hills Ave @ Euclid St W

Blue Hills Ave @ Harold St

Blue Hills Ave @ Opp Boothbay St

Blue Hills Ave @ Litchfield St

Blue Hills Ave @ Tower Ave

Blue Hills Ave @ Branford St

Blue Hills Ave @ Andover St

Blue Hills Ave @ Holcomb St

Blue Hills Ave @ Colebrook St

Blue Hills Ave @ Pembroke St

Blue Hills Ave @ Thomaston St

Blue Hills Ave @ Chatham St

Blue Hills Ave @ Hebron St

Blue Hills Ave @ Sharon St

Blue Hills Ave @ Burlington St

Blue Hills Ave @ Westbourne Pkwy

Blue Hills Ave @ Norfolk St

Blue Hills Ave @ Opp Greenfield St

Albany Ave @ Collin Bennett Building

Albany Ave @ Woodland St

Albany Ave @ opp Deerfield Ave

Albany Ave @ Sigourney St

Albany Ave @ Burton St

Albany Ave @ Garden St

Albany Ave @ Brook St

Albany Ave @ Edwards St

Albany Ave @ Chestnut St

Albany Ave @ 62 Albany Ave

Main St @ Albany Ave

Main St @ Trumbull St

Main St @ Pratt St

Main St @ Pearl St

Direction

Main St @ 750 Main St — Sacred Heart Lot @ Wintonbury Ave

58 stops

[Open route schedule](#)

Main St @ 750 Main St

Main St @ opp Church St

Main St @ Dunkin Donuts Park

Albany Ave @ Main St

Albany Ave @ East St

Albany Ave @ Green St

Albany Ave @ Brook St

Albany Ave @ Garden St

Albany Ave @ Vine St

Albany Ave @ Edgewood St

Albany Ave @ Deerfield Ave

Albany Ave @ Woodland St

Albany Ave @ Blue Hills Ave

Blue Hills Ave @ Greenfield St

Blue Hills Ave @ Opp Norfolk St

Blue Hills Ave @ Westbourne Pkwy

Blue Hills Ave @ Opp Burlington St

Blue Hills Ave @ Opp Sharon St

Blue Hills Ave @ Opp Hebron St

Blue Hills Ave @ Opp Chatham St

Blue Hills Ave @ Thomaston St

Blue Hills Ave @ Pembroke St

Blue Hills Ave @ Colebrook St

Blue Hills Ave @ Holcomb St

Route schedule

Main St @ 750 Main St — Sacred Heart Lot @ Wintonbury Ave

Monday 05:55-00:45⁺¹

Tuesday 05:55-00:45⁺¹

Wednesday 05:55-00:45⁺¹

Thursday 05:55-00:45⁺¹

Friday 05:55-00:45⁺¹

Saturday 06:40-22:45

Sunday 06:30-19:40

Route info

Direction: Main St @ 750 Main St

Stops: 58

Trip Duration: 0 hour 37 min

Blue Hills Ave @ Opp Andover St

Blue Hills Ave @ Branford St

Blue Hills Ave @ Tower Ave

Blue Hills Ave @ Opp Litchfield St

Blue Hills Ave @ Opp Harold St

Blue Hills Ave @ E Euclid St

Blue Hills Ave @ E Morningside St

Blue Hills Ave @ Gilbert Ave

Blue Hills Ave @ Merriam Ave

Blue Hills Ave @ Elizabeth Ave

Blue Hills Ave @ Mt St Benedict

Blue Hills Ave @ Opp Dunkin Donuts

Blue Hills Ave @ Marguerite Ave

Walsh St @ Blue Hills Ave

Walsh St @ Neighborhood Ctr

Cottage Grove Rd @ Chapel St

Cottage Grove Rd @ Opp Hillcrest Ave

Cottage Grove Rd @ School St

Copaco @ McDonald's

Copaco @ IHOP

Cottage Grove Rd @ Tyler St

Tyler St @ Dale Ave

Tyler St @ Rockwell Ave

Tyler St @ 80 Tyler St

Park Ave @ opp Tyler St

Park Ave @ 476 Park Ave

Park Ave @ Revere Dr 1

Park Ave @ Huckleberry Ln

Park Ave @ opp Amazing Plaza

Park Ave @ Dunkin Donut

Park Ave @ Jerome Ave

Park Ave @ Tunxis Ave

Wintonbury Ave @ Wintonbury Mall

Sacred Heart Lot @ Wintonbury Ave

Direction

Main St @ 750 Main St — Sacred Heart Lot @ Wintonbury Ave

58 stops

[Open route schedule](#)

Main St @ 750 Main St

Main St @ opp Church St

Main St @ Dunkin Donuts Park

Albany Ave @ Main St

Albany Ave @ East St

Albany Ave @ Green St

Albany Ave @ Brook St

Albany Ave @ Garden St

Albany Ave @ Vine St

Albany Ave @ Edgewood St

Albany Ave @ Deerfield Ave

Albany Ave @ Woodland St

Albany Ave @ Blue Hills Ave

Blue Hills Ave @ Greenfield St

Blue Hills Ave @ Opp Norfolk St

Blue Hills Ave @ Westbourne Pkwy

Blue Hills Ave @ Opp Burlington St

Blue Hills Ave @ Opp Sharon St

Blue Hills Ave @ Opp Hebron St

Blue Hills Ave @ Opp Chatham St

Blue Hills Ave @ Thomaston St

Blue Hills Ave @ Pembroke St

Blue Hills Ave @ Colebrook St

Blue Hills Ave @ Holcomb St

Route schedule

Main St @ 750 Main St — Sacred Heart Lot @ Wintonbury Ave

Monday —

Tuesday —

Wednesday 06:30-17:20

Thursday —

Friday —

Saturday —

Sunday —

Route info

Direction: Main St @ 750 Main St

Stops: 58

Trip Duration: 0 hour 32 min

Blue Hills Ave @ Opp Andover St

Blue Hills Ave @ Branford St

Blue Hills Ave @ Tower Ave

Blue Hills Ave @ Opp Litchfield St

Blue Hills Ave @ Opp Harold St

Blue Hills Ave @ E Euclid St

Blue Hills Ave @ E Morningside St

Blue Hills Ave @ Gilbert Ave

Blue Hills Ave @ Merriam Ave

Blue Hills Ave @ Elizabeth Ave

Blue Hills Ave @ Mt St Benedict

Blue Hills Ave @ Opp Dunkin Donuts

Blue Hills Ave @ Marguerite Ave

Walsh St @ Blue Hills Ave

Walsh St @ Neighborhood Ctr

Cottage Grove Rd @ Chapel St

Cottage Grove Rd @ Opp Hillcrest Ave

Cottage Grove Rd @ School St

Copaco @ McDonald's

Copaco @ IHOP

Cottage Grove Rd @ Tyler St

Tyler St @ Dale Ave

Tyler St @ Rockwell Ave

Tyler St @ 80 Tyler St

Park Ave @ opp Tyler St

Park Ave @ 476 Park Ave

Park Ave @ Revere Dr 1

Park Ave @ Huckleberry Ln

Park Ave @ opp Amazing Plaza

Park Ave @ Dunkin Donut

Park Ave @ Jerome Ave

Park Ave @ Tunxis Ave

Wintonbury Ave @ Wintonbury Mall

Sacred Heart Lot @ Wintonbury Ave

Direction

Main St @ 750 Main St — Copaco @ McDonald's

43 stops

[Open route schedule](#)

Main St @ 750 Main St

Main St @ opp Church St

Main St @ Dunkin Donuts Park

Albany Ave @ Main St

Albany Ave @ East St

Albany Ave @ Green St

Albany Ave @ Brook St

Albany Ave @ Garden St

Albany Ave @ Vine St

Albany Ave @ Edgewood St

Albany Ave @ Deerfield Ave

Albany Ave @ Woodland St

Albany Ave @ Blue Hills Ave

Blue Hills Ave @ Greenfield St

Blue Hills Ave @ Opp Norfolk St

Blue Hills Ave @ Westbourne Pkwy

Blue Hills Ave @ Opp Burlington St

Blue Hills Ave @ Opp Sharon St

Blue Hills Ave @ Opp Hebron St

Blue Hills Ave @ Opp Chatham St

Blue Hills Ave @ Thomaston St

Blue Hills Ave @ Pembroke St

Blue Hills Ave @ Colebrook St

Blue Hills Ave @ Holcomb St

Blue Hills Ave @ Opp Andover St

Route schedule

Main St @ 750 Main St — Copaco @ McDonald's

Monday —

Tuesday —

Wednesday 18:30-19:40

Thursday —

Friday —

Saturday —

Sunday —

Route info

Direction: Main St @ 750 Main St

Stops: 43

Trip Duration: 0 hour 24 min

Blue Hills Ave @ Branford St

Blue Hills Ave @ Tower Ave

Blue Hills Ave @ Opp Litchfield St

Blue Hills Ave @ Opp Harold St

Blue Hills Ave @ E Euclid St

Blue Hills Ave @ E Morningside St

Blue Hills Ave @ Gilbert Ave

Blue Hills Ave @ Merriam Ave

Blue Hills Ave @ Elizabeth Ave

Blue Hills Ave @ Mt St Benedict

Blue Hills Ave @ Opp Dunkin Donuts

Blue Hills Ave @ Marguerite Ave

Walsh St @ Blue Hills Ave

Walsh St @ Neighborhood Ctr

Cottage Grove Rd @ Chapel St

Cottage Grove Rd @ Opp Hillcrest Ave

Cottage Grove Rd @ School St

Copaco @ McDonald's

Direction

Sacred Heart Lot @ Wintonbury Ave — Main St @ Pearl St

57 stops

[Open route schedule](#)

Sacred Heart Lot @ Wintonbury Ave

Wintonbury Ave @ Jerome Ave

Jerome Ave @ Park Ave

Park Ave @ Seneca Rd

Park Ave @ Amazing Plaza

Park Ave @ Huckleberry Ln

Park Ave @ opp Revere Dr

Park Ave @ 451 Park Ave

Park Ave @ Tyler St

Tyler St @ 81 Tyler St

Tyler St @ opp Rockwell Ave

Tyler St @ opp Dale Ave

Stop & Shop @ Copaco

Burlington Coat @ Copaco

Cottage Grove Rd @ Charter Ave

Cottage Grove Rd @ Hillcrest Ave

Cottage Grove Rd @ Albemarle Rd

Walsh St @ opp Neighborhood Ctr

Walsh St @ Blue Hills Ave

Blue Hills Ave @ Porter Ave

Blue Hills Ave @ Britton Dr

Blue Hills Ave @ Opp Elizabeth Ave

Blue Hills Ave @ Hubbard St

Blue Hills Ave @ Darby St

Route schedule

Sacred Heart Lot @ Wintonbury Ave — Main St @ Pearl St

Monday —

Tuesday —

Wednesday —

Thursday —

Friday —

Saturday —

Sunday 07:12-20:12

Route info

Direction: Sacred Heart Lot @ Wintonbury Ave

Stops: 57

Trip Duration: 0 hour 38 min

Blue Hills Ave @ Brookline Ave

Blue Hills Ave @ Euclid St W

Blue Hills Ave @ Harold St

Blue Hills Ave @ Opp Boothbay St

Blue Hills Ave @ Litchfield St

Blue Hills Ave @ Tower Ave

Blue Hills Ave @ Branford St

Blue Hills Ave @ Andover St

Blue Hills Ave @ Holcomb St

Blue Hills Ave @ Colebrook St

Blue Hills Ave @ Pembroke St

Blue Hills Ave @ Thomaston St

Blue Hills Ave @ Chatham St

Blue Hills Ave @ Hebron St

Blue Hills Ave @ Sharon St

Blue Hills Ave @ Burlington St

Blue Hills Ave @ Westbourne Pkwy

Blue Hills Ave @ Norfolk St

Blue Hills Ave @ Opp Greenfield St

Albany Ave @ Collin Bennett Building

Albany Ave @ Woodland St

Albany Ave @ opp Deerfield Ave

Albany Ave @ Sigourney St

Albany Ave @ Burton St

Albany Ave @ Garden St

Albany Ave @ Brook St

Albany Ave @ Edwards St

Albany Ave @ Chestnut St

Albany Ave @ 62 Albany Ave

Main St @ Albany Ave

Main St @ Trumbull St

Main St @ Pratt St

Main St @ Pearl St

Direction

Cigna Campus Way @ Met Life — Main St @ Gold St

55 stops

[Open route schedule](#)

Cigna Campus Way @ Met Life

Cigna Campus Way @ Wilde Building

Cottage Grove Rd @ Bloomfield Ave

Cottage Grove Rd @ 701 Cottage Grove Rd

Cottage Grove Rd @ 600 Apartments

Cottage Grove Rd @ Opp 580 Cottage Grove Rd

Cottage Grove Rd @ Northwestern Dr

Cottage Grove Rd @ Opp Savin Rd

Cottage Grove Rd @ Opp Lincoln Terr

Cottage Grove Rd @ Opp Cottage Grove Cir

Stop & Shop @ Copaco

Burlington Coat @ Copaco

Cottage Grove Rd @ Charter Ave

Cottage Grove Rd @ Hillcrest Ave

Cottage Grove Rd @ Albemarle Rd

Walsh St @ opp Neighborhood Ctr

Walsh St @ Blue Hills Ave

Blue Hills Ave @ Porter Ave

Blue Hills Ave @ Britton Dr

Blue Hills Ave @ Opp Elizabeth Ave

Blue Hills Ave @ Hubbard St

Blue Hills Ave @ Darby St

Blue Hills Ave @ Brookline Ave

Blue Hills Ave @ Euclid St W

Blue Hills Ave @ Harold St

Route schedule

Cigna Campus Way @ Met Life — Main St @ Gold St

Monday 05:42-18:07

Tuesday 05:42-18:07

Wednesday 05:42-18:07

Thursday 05:42-18:07

Friday 05:42-18:07

Saturday —

Sunday —

Route info

Direction: Cigna Campus Way @ Met Life

Stops: 55

Trip Duration: 0 hour 41 min

Blue Hills Ave @ Opp Boothbay St

Blue Hills Ave @ Litchfield St

Blue Hills Ave @ Tower Ave

Blue Hills Ave @ Branford St

Blue Hills Ave @ Andover St

Blue Hills Ave @ Holcomb St

Blue Hills Ave @ Colebrook St

Blue Hills Ave @ Pembroke St

Blue Hills Ave @ Thomaston St

Blue Hills Ave @ Chatham St

Blue Hills Ave @ Hebron St

Blue Hills Ave @ Sharon St

Blue Hills Ave @ Burlington St

Blue Hills Ave @ Westbourne Pkwy

Blue Hills Ave @ Norfolk St

Blue Hills Ave @ Opp Greenfield St

Albany Ave @ Collin Bennett Building

Albany Ave @ Woodland St

Albany Ave @ opp Deerfield Ave

Albany Ave @ Sigourney St

Albany Ave @ Burton St

Albany Ave @ Garden St

Albany Ave @ Brook St

Albany Ave @ Edwards St

Albany Ave @ Chestnut St

Albany Ave @ 62 Albany Ave

Main St @ Albany Ave

Main St @ Trumbull St

Main St @ Pratt St

Main St @ Gold St

Direction

Stop & Shop @ Copaco — Main St @ Pearl St

45 stops

[Open route schedule](#)

Stop & Shop @ Copaco

Burlington Coat @ Copaco

Cottage Grove Rd @ Charter Ave

Cottage Grove Rd @ Hillcrest Ave

Cottage Grove Rd @ Albemarle Rd

Walsh St @ opp Neighborhood Ctr

Walsh St @ Blue Hills Ave

Blue Hills Ave @ Porter Ave

Blue Hills Ave @ Britton Dr

Blue Hills Ave @ Opp Elizabeth Ave

Blue Hills Ave @ Hubbard St

Blue Hills Ave @ Darby St

Blue Hills Ave @ Brookline Ave

Blue Hills Ave @ Euclid St W

Blue Hills Ave @ Harold St

Blue Hills Ave @ Opp Boothbay St

Blue Hills Ave @ Litchfield St

Blue Hills Ave @ Tower Ave

Blue Hills Ave @ Branford St

Blue Hills Ave @ Andover St

Blue Hills Ave @ Holcomb St

Blue Hills Ave @ Colebrook St

Blue Hills Ave @ Pembroke St

Blue Hills Ave @ Thomaston St

Blue Hills Ave @ Chatham St

Route schedule

Stop & Shop @ Copaco — Main St @ Pearl St

Monday —

Tuesday —

Wednesday 19:02-20:12

Thursday —

Friday —

Saturday —

Sunday —

Route info

Direction: Stop & Shop @ Copaco

Stops: 45

Trip Duration: 0 hour 28 min

Blue Hills Ave @ Hebron St

Blue Hills Ave @ Sharon St

Blue Hills Ave @ Burlington St

Blue Hills Ave @ Westbourne Pkwy

Blue Hills Ave @ Norfolk St

Blue Hills Ave @ Opp Greenfield St

Albany Ave @ Collin Bennett Building

Albany Ave @ Woodland St

Albany Ave @ opp Deerfield Ave

Albany Ave @ Sigourney St

Albany Ave @ Burton St

Albany Ave @ Garden St

Albany Ave @ Brook St

Albany Ave @ Edwards St

Albany Ave @ Chestnut St

Albany Ave @ 62 Albany Ave

Main St @ Albany Ave

Main St @ Trumbull St

Main St @ Pratt St

Main St @ Pearl St

50 Bus time schedules and route maps are available in an offline PDF at busmaps.com. Use the busmaps.com website to see live bus times, train schedule or subway schedule, and step-by-step directions for all public transit in Hartford

The schedule is provided in the local timezone. Times with "(+1)" indicate departures on the next day.

PDF file created on 2025-01-16

2024 BusMaps.com - All Rights Reserved