

Bus XG636005 Meira-Muimenta-Lugo E.A.

[Go to website](#)

Direction

Lugo E.A. — Meira

30 stops

[Open route schedule](#)

Lugo E.A.

Hospital Hula

Tolda Polígono

Ramil

Restaurante González - II

Pontenova

Castro

Robra

Outeiro DE Rei

Albarón

Vilela

Vilela Pequena

Sobrada

AV. Outeiro DE REI 63

Castro Residencia

Castro Ribeiras De Lea (H

Xustás (Cruce LU-113/CP-1

Bexán-Rubiños (Cruce LU-1

Mesón DE Eulogio (Roás)

Centro Cívico- Arneiro

Muimenta

Route schedule

Lugo E.A. — Meira

Monday 19:30

Tuesday 19:30

Wednesday 19:30

Thursday 19:30

Friday 19:30

Saturday —

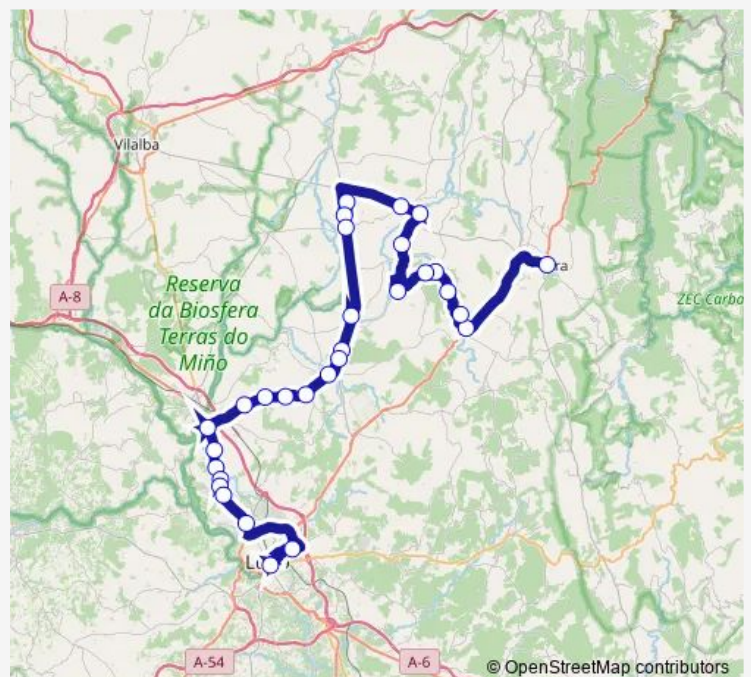
Sunday —

Route info

Direction: Lugo E.A.

Stops: 30

Trip Duration: 1 hour 35 min



XG636005 — Meira-Muimenta-Lugo E.A.

BusMaps

Ponte de Outeiro

Bazar

Quintela

Cruce Santa Leocadia

Castro DE REI (Centro)

Azúmara

Igrexa Ramil

Reguntille

Meira

Direction

Meira — Lugo E.A.

30 stops

[Open route schedule](#)

Meira

Reguntille

Igrexa Ramil

Azúmara

Castro DE REI (Centro)

Cruce Santa Leocadia

Quintela

Bazar

Ponte de Outeiro

Muimenta

Centro Cívico- Arneiro

Mesón DE Eulogio (Roás)

Bexán-Rubiños (Cruce LU-1

Xustás (Cruce LU-113/CP-1

Castro Ribeiras De Lea (H

Castro Residencia

AV. Outeiro DE REI 63

Sobrada

Vilela Pequena

Vilela

Albarón

Outeiro DE Rei

Robra

Castro

Pontenova

Route schedule

Meira — Lugo E.A.

Monday 11:00-15:00

Tuesday 11:00-15:00

Wednesday 11:00-15:00

Thursday 11:00-15:00

Friday 11:00-15:00

Saturday —

Sunday —

Route info

Direction: Meira

Stops: 30

Trip Duration: 1 hour 35 min

Restaurante González - II

Ramil

Tolda Polígono

Hospital Hula

Lugo E.A.

XG636005 Bus time schedules and route maps are available in an offline PDF at busmaps.com. Use the busmaps.com website to see live bus times, train schedule or subway schedule, and step-by-step directions for all public transit in Lugo

The schedule is provided in the local timezone. Times with "(+1)" indicate departures on the next day.

PDF file created on 2025-01-16

2024 BusMaps.com - All Rights Reserved